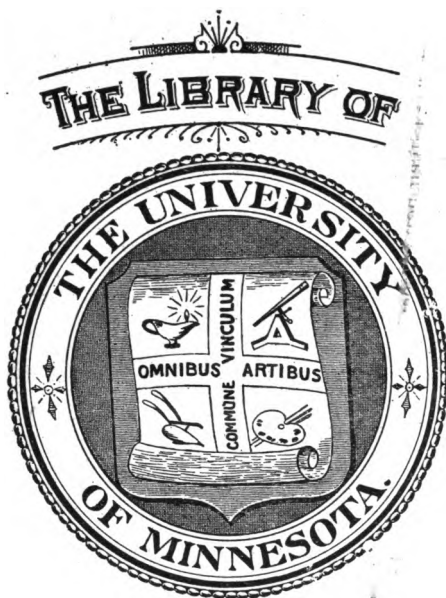

This is a reproduction of a library book that was digitized by Google as part of an ongoing effort to preserve the information in books and make it universally accessible.

GoogleTM books

<http://books.google.com>





CLASS 354.424
BOOK G79



Gr. Brit. POST OFFICE.

FIFTY-FIFTH REPORT
OF THE
POSTMASTER GENERAL
ON THE
POST OFFICE.

Presented to both Houses of Parliament by Command of His Majesty.



LONDON:
PRINTED FOR HIS MAJESTY'S STATIONERY OFFICE
BY JAMES TRUSCOTT AND SON, LIMITED,
PRINTERS TO THE KING'S MOST EXCELLENT MAJESTY.

And to be purchased, either directly or through any Bookseller, from
WYMAN AND SONS, LTD., FETTER LANE, E.C., and
32, ABINGDON STREET, WESTMINSTER, S.W.; or
OLIVER AND BOYD, EDINBURGH; or
E. PONSONBY, 116, GRAFTON STREET, DUBLIN.

1909.

[Cd. 4814.] Price 5½d.

INDEX.

Statistics of Postal Packets	-	-	-	-	-	-	-	Page.	1
Express Delivery Services	-	-	-	-	-	-	-		2
Undelivered Postal Packets	-	-	-	-	-	-	-		2
Home Mail Services	-	-	-	-	-	-	-		2
Foreign and Colonial Post	-	-	-	-	-	-	-		3
Money Orders	-	-	-	-	-	-	-		7
Postal Orders	-	-	-	-	-	-	-		9
Old Age Pensions-	-	-	-	-	-	-	-		10
Local Taxation Licences	-	-	-	-	-	-	-		11
Post Office Savings Bank	-	-	-	-	-	-	-		11
Telegraphs	-	-	-	-	-	-	-		14
Foreign Telegraphs	-	-	-	-	-	-	-		16
Wireless Telegraphy	-	-	-	-	-	-	-		17
Telephones	-	-	-	-	-	-	-		19
Wayleaves	-	-	-	-	-	-	-		23
Telegraph and Telephone Accounts	-	-	-	-	-	-	-		24
Telegraphic Monopoly	-	-	-	-	-	-	-		24
Post Office Buildings	-	-	-	-	-	-	-		24
Post Offices and Letter Boxes	-	-	-	-	-	-	-		25
Stores, Factories and Contracts	-	-	-	-	-	-	-		26
Staff	-	-	-	-	-	-	-		26
Select Committee on Post Office Servants	-	-	-	-	-	-	-		27
Health of the Staff	-	-	-	-	-	-	-		28
Finance	-	-	-	-	-	-	-		30
Conclusion	-	-	-	-	-	-	-		30

CONTENTS OF APPENDICES.

	Pag
A. :—	
Estimated number of all kinds of postal packets and telegrams for 1908-9...	32
Number of Letters delivered in the United Kingdom (ten years' table)	33
Number of Post-cards delivered in the United Kingdom (ten years' table)	34
Number of Halfpenny Packets delivered in the United Kingdom (ten years' table)	35
Number of Newspapers delivered in the United Kingdom (ten years' table)	36
Number of Parcels delivered in the United Kingdom (ten years' table)	37
Number of Letters registered in the United Kingdom (ten years' table)	38
Number of Parcels registered in the United Kingdom (ten years' table)	39
Number of Letters and Parcels registered in the United Kingdom—Analysis of fees paid (ten years' table)	40
Express Delivery Services in the United Kingdom (ten years' table)	41
B. :—	
Estimated Weight of Foreign and Colonial Letters, &c., despatched and received	42
Number of Foreign and Colonial Parcels despatched and received (ten years' table)	44
C. :—	
Contracts for Home Packet Service...	48
D. :—	
Contracts for Foreign and Colonial Packet Service	52
E. :—	
Number and description of Inland Revenue Licences issued by the Post Office (ten years' table)	54
F. :—	
Staff of Officers	55
Mortality	57
Retirements through ill-health	58
Average sick absence	59
G. :—	
Number of Undelivered Postal Packets (ten years' table)	60
H. :—	
Number of Telegrams forwarded (ten years' table)	61
Number of Telegrams forwarded in each month of the years 1907-8 and 1908-9	62
Telegraph and Telephone business passing over Government Cables between the United Kingdom and European Countries (ten years' table)	63
J. :—	
Post Office Savings Bank :	
Business during the last ten years	64
Investments in Government Stock (ten years' table)	66
Life Insurance and Annuity Business (ten years' table)	67
Number and Amount of Contracts entered into from the commencement in 1865 to 31st December, 1908, and contracts in existence on that date	68
Extract from Parliamentary Paper (209) : List of liabilities and of securities on account of Savings Bank Fund	69
K. :—	
Money Orders :	
Total Money Order Business (ten years' table)	72
Number and Amount of Inland Money Orders (ten years' table)	73
Number and Amount of Government Money Orders (ten years' table)	74
Number and Amount of Inland Telegraph Money Orders (ten years' table)	75

K.—continued.	Page
Money Orders—continued.	
Number and Amount of Colonial and Foreign Money Orders (ten years' table) ...	76
Amount of Money Order transactions with the various Colonies (ten years' table) ...	77
Amount of Money Order transactions with the various Foreign Countries (ten years' table) ...	78
Number and Amount of Foreign Telegraph Money Orders (ten years' table) ...	80
L. :—	
Number and Amount of Postal Orders issued (ten years' tables) ...	81
M. :—	
Telephone Trunk Wires (ten years' table) ...	84
Provincial Telephone Exchange Wires (ten years' table) ...	84
Private Wires (ten years' table) ...	85
N. :—	
Post Office Telegraphs :	
I. Revenue Account ...	86
II. Deficiency Account ...	88
O. :—	
Post Office Telephones :	
I. Revenue Account ...	90
II. Net Revenue Account ...	92
III. Appropriation Account ...	92
IV. Capital Account ...	94
P. :—	
Post Office Telephones :	
A. Trunk Line System, Expenditure and Income ...	96
B. London Exchange System, Expenditure and Income ...	98
C. Provincial Exchange System, Expenditure and Income ...	100
Q. :—	
Revenue and Expenditure of the Postal Services (ten years' table) ...	102
R. :—	
Revenue and Expenditure of the Post Office Telegraph and Telephone Services (ten years' table) ...	103
S. :—	
Revenue and Expenditure of the Postal, Telegraph and Telephone Services combined (ten years' table) ...	105
T. :—	
Extract from Finance Accounts for year ended 31st March, 1909 ...	106
U. :—	
Summary of Statistics for 1908-9 compared with previous year ...	108

FIFTY-FIFTH ANNUAL REPORT.

TO THE RIGHT HONOURABLE THE LORDS
COMMISSIONERS OF HIS MAJESTY'S TREASURY.

MY LORDS,

I have the honour to submit to your Lordships the Fifty-fifth Annual Report of the Postmaster General, being an account of the business of the Post Office during the year ended the 31st of March 1909.

STATISTICS OF POSTAL PACKETS.

It is estimated that the number of postal packets delivered in the United Kingdom during the year was as follows :—

See also
Appendix A,
pp. 32-37.

—	Number.	Increase per cent.	Average No. for each Person.
Letters - - - -	2,907,400,000	1·5	65·1
Postcards - - - -	860,000,000	0·2	19·3
Halfpenny Packets - - -	953,200,000	1·3	21·3
Newspapers - - - -	202,300,000	1·3	4·5
† Parcels - - - -	113,020,000	3·2	2·5
Total - -	5,035,920,000	1·3	112·7

† The figures as regards parcels include the number of parcels sent from this country to places abroad.

The letters show an increase of 1·5 per cent., as against 2·1 per cent. in 1907-8.

The postcards show an increase of 0·2 per cent. only as compared with 3·2 in 1907-8, 3·9 per cent. in 1906-7, 9·0 per cent. in 1905-6, and 19·7 per cent. in 1904-5, thus confirming the view stated in my last report that the exceptional growth due to the popularity of picture postcards had reached its climax.

The rate of increase in halfpenny packets has risen slightly—from 0·8 per cent. to 1·3 per cent. ; while in the case of newspapers there is a falling off in the rate from 5·7 per cent. to 1·3 per cent. The rate of increase in parcels is 3·2 per cent. as compared with 4·4 per cent. for the previous year.

The number of letters registered during the year was 19,222,475, an increase of 0·5 per cent. on the figures for 1907-8; and the number of parcels registered was 1,053,506, an increase of 1·9 per cent.

See also
Appendix A,
pp. 38-40.

EXPRESS DELIVERY SERVICES.

See also
Appendix A,
p. 41.

The total number of express services performed was 1,919,687, as compared with 1,808,888 in the previous year, an increase of 6·1 per cent.

UNDELIVERED POSTAL PACKETS.

Statistics.
See also
Appendix G,
p. 60.

The number of undelivered packets, including packets entirely unaddressed and articles found loose, dealt with during the year ended the 31st of March 1909, is estimated to have reached a total of 30,509,000, or about 769,000 (2·46 per cent.) less than the preceding year. The reduction was in the number of half-penny packets.

The undeliverable registered letters and letters containing articles of value numbered 393,468, approximately the same number as in 1907-8. They contained 16,065*l.* in cash and banknotes, and 606,825*l.* in bills, cheques, money orders, postal orders and postage stamps. These figures do not include the value of remittances enclosed in packets returned unopened to the senders, nor the value of miscellaneous property dealt with as undeliverable.

The total number of packets posted without any address and of articles found loose in the post during the year was 427,824, a decrease of 15,133 as compared with the number for the preceding year. Included among these were bank-notes and cash to the value of 1,495*l.*, and cheques and other forms of remittance to the value of 24,076*l.*

HOME MAIL SERVICES.

Fishguard
and
Rosslare
route.

The Fishguard and Rosslare route, which has for some time past been used to accelerate the transmission of certain Irish Mails, has recently been adopted for the conveyance of American Mails between Queenstown and the West of England and South Wales, when its use is attended with any material advantage to the service.

Great
Northern
of Ireland
Railway
Company.
Payment for
Mail
Service.

In the course of the year the Great Northern of Ireland Railway Company, whose contract for the conveyance of the mails was terminated on the ground that the payment made to them, namely, 44,413*l.* a year, was in excess of the value of the services rendered, appealed to the Railway Commissioners to decide the case. The Commissioners have now given their judgment, which is favourable to the Post Office. The claim put forward by the Company worked out to about 94,000*l.* a year, and the payment awarded by the Commissioners is 35,000*l.* a year.

Frequency
of Delivery.

The arrangements for affording increased frequency of delivery in remote parts of the United Kingdom, as introduced in 1906, are now practically complete, with the result that about three and a half millions of letters a year are being accelerated in delivery.

During the year arrangements were made at the request of the Worn Royal Mint for the withdrawal of worn bronze coin at certain Post bronze coin Offices. Coin to the value of 5,460*l.* was thus withdrawn from circulation. The variation from standard weight was found to be about 11·5 per cent.

Further progress has been made in the use of motor vans for Use of the conveyance of mails, and there has been a steady improvement Motor Vans in the working. The total number of services, or sets of services, on Mail now performed by motor mail vans is about 60. During the year Services. important motor services have been established between London and the following towns :—Dover, Ramsgate, Southampton, Portsmouth and Reading ; and motor vans are now employed on all the long-distance Parcel Coach Services between London and provincial towns which were previously performed by horse coaches. The question of establishing a motor parcel service between Glasgow and Edinburgh is under consideration.

FOREIGN AND COLONIAL POST.

The Empire of Abyssinia (Ethiopia) entered the Universal Adhesion Postal Union on the 1st of November 1908. to Postal Union.

The total weight of letters and postcards despatched from the Postal United Kingdom to places abroad continues to increase, the rate of Union. growth in 1908 being 11·43 per cent. as compared with 9·67 per Effect of cent. in 1907. In 1906 the growth was at little more than half reduced rate the last mentioned rate ; and the rapid increase during the last for letters. two years is, no doubt, due to the more favourable postage rates See also which came into force in October, 1907. The rate of increase in pp. 42-43. the total weight of printed and other matter where there was no reduction in postage has fallen from 8·16 per cent. in 1907 to 2·74 per cent., and but for the development of the Canadian Magazine Post the figures would now be almost stationary. It is, of course, probable that there has been some diversion of printed matter to the letter post in connection with the increase from half an ounce to one ounce of the unit of weight for letters.

Penny postage has been extended to certain islands under the Imperial jurisdiction of the High Commissioner for the Western Pacific Penny (Friendly Islands, Gilbert Islands, British Solomon Islands), and Postage. arrangements have also been made for its extension to the British-Indian Post Offices at Bahrein, Guadar and Muscat in the Persian Gulf.

Penny postage with the United States of America was estab- Postage to lished on the 1st October 1908, and the result has been satisfactory. United The arrangement applies to letters exchanged between places States of in the United Kingdom and places in the United States America. including Alaska and Hawaii. The latest statistics indicate an increase in the number of letters between the two countries since the introduction of Penny postage of about 25 per cent., a very satisfactory increase.

**Canadian
Magazine
Post.**

The public continue to display appreciation of the special arrangement under which Newspapers, Magazines and Trade Journals, duly registered for the purpose, may be sent to the Dominion at a postage rate of 1d. per lb. It is estimated that the total number of periodicals forwarded by the Canadian Magazine Post during the past year was about 8½ millions. The number of periodicals specially registered for the purpose of the Post is now close on 300. This number does not include newspapers published at intervals of 7 days or less, and registered for transmission in the United Kingdom at the halfpenny rate, which can be sent to Canada at the privileged rate without further registration. It will be recollected that the British Post Office bears the loss on the reduction in the postage from 4d. to 1d., while the Dominion Post Office undertakes the cost of the sea transit.

Negotiations have been in progress for the establishment of a similar service to Newfoundland and there is reason to hope that a satisfactory arrangement will be made.

**Aden and
Zanzibar
Mail
Service.**

The Contract with the British India Steam Navigation Company, Limited, for the Mail Service between Aden, Mombasa and Zanzibar has recently been revised. Under the new arrangement, which came into operation on the 22nd of February last, the subsidy remains the same (9,000l a year); but provision has been made for an increase in the speed of the steamers and for an improvement in the connection at Aden with the Peninsular and Oriental Packets. A reduction of one week has thus been effected in the duration of the round course of post from London to Mombasa and Zanzibar and back by British Packet.

**Trans-
Siberian
Mail
Service.**

High rates are still charged for the conveyance of mails to the Far East by the Siberian route; and it has consequently been considered necessary to maintain the restriction of the use of the route to letters and postcards both in the British and Continental services. I am endeavouring, in concert with other administrations, to secure such a reduction of transit rates as would justify a more extensive use of this route. The service with Shanghai has benefited by the provision of more frequent communication by steamship between that port and Dalny.

**Mail
Service
with Chili
and the
Argentine
Republic.**

The Argentine Post Office having agreed to accept a small amount of correspondence for transmission to Chili by the route of Buenos Ayres and the Andes during the South American winter, specially addressed letters within certain limits as to weight are now forwarded by this quicker route during that season. In previous years the Andes route has been available only during the South American summer.

Arrangements have been made to take advantage of the fast German steamers from Southampton to Buenos Ayres for the transmission of regular mails. Hitherto only correspondence specially addressed has been sent by these steamers.

**American
Mails.**

The Sea Post Offices on board the steamships of the White Star and American Lines between the United Kingdom and New York continue to work satisfactorily. I regret that I have not yet

been able to arrange for similar Post Offices on board the Packets of the Cunard Line or on the Packets of the Canadian Pacific Railway Company and the Allan Line, which maintain the direct service with Canada.

The Colonial Cash on Delivery service, to which reference was made in my last Report, was begun on the 1st of June 1908, with Malta, Cyprus, the British Post Offices at Constantinople, Smyrna, Beyrout, Salonica and Tangier and with Egypt. It has since been extended to the Bahamas, Barbadoes, Bermuda, the Cayman Islands, the Fiji Islands, Gambia, Gibraltar, the Gold Coast Colony, Grenada, Hong Kong, Jamaica, the Leeward Islands, the Nyasaland Protectorate, St. Lucia, St. Vincent, British Somaliland, Southern Nigeria, Southern Rhodesia, the Straits Settlements and Trinidad.

Under this arrangement the value of an article sent by post in fulfilment of an order is collected from the addressee and remitted to the sender by Money Order or Postal Order, after deduction of the charges due to the Office of delivery for its services. The maximum amount to be collected on any one packet must not exceed 20l.

During the 10 months from the 12th of June 1908 to the 31st March 1909, 4,949 cash on delivery packets were sent from the United Kingdom to the places participating in the service and 438 were received. More recent figures show that there has been a very large increase in the outward and a moderate one in the homeward packets. It is probable that the establishment of the service has been of some use in fostering within the Empire a trade in small articles which can conveniently be sent by post.

The Reply Coupon system (by which it is possible to prepay the reply to a letter sent to a place abroad, or to remit very small sums of money which would not justify the expense of a money order) has been considerably extended during the year; and most of the more important countries of the Postal Union are now included in it. The number of coupons issued abroad and exchanged for stamps in this country during the year was 54,924. Statistics of the number sold in this country during this period are not yet available, but in the first seven months after the introduction of the system the number was 38,575.

On the 1st of January last an "Insured Box" post was established between the United Kingdom and France and Belgium. The service has since been extended to Holland and Germany; and negotiations are in progress for extending the service to other Continental countries.

The "Insured Box" post is intended for the conveyance of articles of gold and silver (except coin), precious stones, jewellery and valuable articles of a like nature which are prohibited from transmission in insured letters, and which cannot conveniently be sent as parcels.

Insured Letters and Parcels. The system of insured letters was extended to the British Postal Agencies at Constantinople, Smyrna, Beyrout and Salonica on the 1st of January 1909. The maximum amount for which a letter can be insured is 400l. Insurance of letters has also been introduced with Dutch Guiana.

The estimated number of insured letters despatched to places abroad during the year was 13,370 as against 11,605 during the previous year—an increase of 15·21 per cent; whilst the estimated number received from places abroad was 61,555 as against 59,491—an increase of 3·47 per cent.

The Insurance system for parcels has been extended to the Dutch East Indies, to Portuguese Timor and to Jamaica.

Foreign and Colonial Parcel Post. As a result of the revision last year of the rates of postage on parcels sent from the United Kingdom to the United States of America by the Official service and of the increase of the maximum weight from 4 lb. 6 oz. to 11 lbs., there has been a remarkable growth in the number of parcels sent by this service. The number of parcels sent in December 1908 was 19,344, as compared with 11,083 sent during December 1907. Excluding the month of December, the number of parcels sent to the United States by the official service since the increase of the limit of weight has averaged about 5,300 a month, as compared with 3,750 a month during the corresponding period of the previous year.

A Parcel Post has been established with Russia in Asia and with Northern Manchuria and Japan by way of Siberia.

Improvements have been made in the Parcel Post with Egypt, Portuguese East Africa, the Dutch East Indies, the Kiautschou Protectorate and the Argentine and Panama Republics, while negotiations are in progress with the Republics of Honduras, Peru, Brazil and Cuba with a view to the provision of further facilities.

Number of Parcels. The number of parcels sent to and received from places abroad during the year was as follows:—
See also Appendix B, pp. 44-47.

—		Insured.	Ordinary.	Total.
Despatched	- -	221,639	2,586,412	2,808,051
Received	- -	140,782	1,393,260	1,534,042
Total	- - -	362,421	3,979,672	4,342,093

The combined total number of outward and homeward parcels shows an increase over that of last year, amounting to 89,732, or about 2 per cent. The total number of foreign and colonial parcels insured, namely, 362,421, as against 347,194 in the previous year, shows an increase of about 4·5 per cent.

According to the Board of Trade Returns, the value of the goods exported and imported by Parcel Post during the last three years has been as follows:—

Exports and Imports by Parcel Post.

	Twelve months ended 31st March.			Comparison of 1908-9 with 1907-8.	Comparison of 1908-9 with 1906-7.
	1907.	1908.	1909.		
	£	£	£	£	£
Exports -	4,638,917	5,072,581*	5,170,786	+ 98,205	+ 531,869
Imports -	1,535,661	1,463,948*	1,444,496	— 19,452	— 91,165
Total -	6,174,578	6,536,529*	6,615,282	+ 78,753	+ 440,704

*Amended figures.

MONEY ORDERS.

The number of Inland Money Orders issued during the year ended the 31st March 1908, was 10,232,448 representing a sum of 39,307,038*l*.

Statistics. See also Appendix K. pp. 72-80.

The following table shows the number and value of the Orders of each kind with the corresponding figures for the previous year:—

	Number of Inland Money Orders.			
	1907-8.	1908-9.	Increase + or Decrease —	Rate per cent.
Ordinary - - -	7,041,904	6,675,479	— 366,425	— 5.20
Telegraph - - -	544,692	587,112	+ 42,420	+ 7.79
Government - - -	2,844,901	2,969,857	+ 124,956	+ 4.39
Total - - -	10,431,497	10,232,448	— 199,049	— 1.91

	Amount of Inland Orders.			
	1907-08.	1908-9.	Increase or Decrease.	Rate per cent.
	£	£	£	
Ordinary - - -	28,027,259	27,817,037	— 210,222	— 0.75
Telegraph - - -	1,894,588	2,018,918	+ 124,330	+ 6.56
Government - - -	9,138,743	9,471,083	+ 332,340	+ 3.64
Total - - -	39,060,590	39,307,038	+ 246,448	+ 0.63

The Foreign and Colonial Orders numbered 3,148,987 and amounted to 8,834,738*l.*, as against 3,197,178 Orders, amounting to 9,291,470*l.* in 1907-8.

Average
amount.

The average amount of each Order for the year ended 31st March 1909, was :—

	Amount.	Increase + or Decrease — on Previous Year.
Inland Orders :—	£ s. d.	s. d.
Ordinary	4 3 4	+ 3 9
Telegraph	3 8 9	— 0 10
Government	3 3 9	— 0 6
Foreign and Colonial Orders	2 16 1	— 2 0

There is a continued advance in the average amount of the Inland Money Order, probably the result of the gradual displacement of Money Orders by Postal Orders for the remittance of small sums.

The total number of Money Orders paid in the United Kingdom was 12,471,755, amounting to 45,314,512*l.* Nearly one-fifth of this amount was paid at the Money Order Department to London bankers under the special arrangements made to facilitate this method of payment. The system of payment to bankers was introduced in Edinburgh and Dublin in May 1908, and further extensions have since been arranged.

Colonial
Orders.

The Money Orders issued in this country during the year 1908-9 for payment in the Colonies and Postal Agencies abroad show an increase of 5,484 (or 2·8 per cent.) in number but a decrease of 3,750*l.* (or 0·4 per cent.) in amount. The decrease in amount is more than accounted for by the diversion to another channel of certain remittances which were merely advised to this country for onward transmission. The Orders from the Colonies show a decrease of 50,805 in number, and 198,654*l.* in amount as compared with 1907-8.

Foreign
Orders.

The Money Orders advised to foreign countries show an increase of 3,455 (0·6 per cent.) in number and 33,272*l.* (2·2 per cent.) in amount. The Orders from foreign countries show a decrease of 6,325 (0·4 per cent.) in number and 287,600*l.* (7·2 per cent.) in amount, chiefly accounted for by a falling off in the remittances from the United States of 38,156 Orders, amounting to 281,016*l.*

Foreign
Telegraph
Money
Orders.

The Telegraph Money Orders exchanged with foreign countries again show an increase, viz. : 2,305 (or 9·6 per cent.) in number 31,460*l.* (or 14·6 per cent.) in amount.

The Orders exchanged through the medium of the London Office between places having no direct Money Order Service numbered 100,504, and amounted to 448,326*l.*, as compared with 99,228 Orders of the value of 423,806*l.* in 1907-8. Through Orders.

The "Advice of payment" system, under which the remitter of a Money Order may, on payment of a small fee, receive notice when the Order has been paid, has been extended to the services with British Guiana, Japan, Costa Rica and Salvador. Advices of Payment.

During the year the Money Order service has been extended to the French Colonies in West Africa, to Madagascar and to Northern Manchuria; a new Agreement has been concluded with Japan, and a direct service with Siam has been established. Extensions of Service Abroad.

Proposals for the establishment of Telegraph Money Order services have been made to India, Ceylon, the South African Colonies, Australia, New Zealand, Malta and Gibraltar; and negotiations are proceeding for the extension of the service to Canada and the United States of America.

The maximum amount for single orders has been increased to 40*l.* in the case of Japan and the Republic of Honduras.

The number of Money Order Offices in the United Kingdom open on the 31st March 1909 was 15,257 or 44 more than on the corresponding date in 1908. Number of Offices.

POSTAL ORDERS.

The total number of Postal Orders issued during the year, including those issued abroad, was 119,280,000, representing an amount of 46,213,000*l.*, a decrease of 4·8 per cent. in number and an increase of 3·6 per cent. in amount as compared with the previous year. The decrease in number is accounted for by the falling off—something more than ten millions—in the demand for sixpenny orders for the "Limerick" competitions. The sale of Orders of all other denominations shows a satisfactory increase. The value of postage stamps affixed to Postal Orders was 250,000*l.* Statistics. See also Appendix L, pp. 81-83.

The commission on the Orders yielded the sum of 461,580*l.*, or 4,551*l.* less than in the previous year.

The Imperial Postal Order scheme has been extended to Northern Nigeria, North-Western Rhodesia, British North Borneo and Sarawak. Imperial Postal Order scheme.

The entire adoption of British Postal Orders in the Cape Colony, Natal and the Transvaal, in place of Colonial Orders, has been attended with complete success. The Postmaster-General of the Cape Colony reports that the postal orders issued in the Colony

in 1908 show an increase of 72 per cent. on the combined Colonial postal note and British postal order business in the Colony during 1907. The total issue in 1907 amounted to 242,313*l.*, whereas the British postal orders issued in the colony in 1908 amounted to 416,708*l.* The view of the Colonial Post Office is that the public in the Colony have found the general use of the British orders of such convenience that new business has been created.

The Dominion of Canada and the Commonwealth of Australia are now the only important parts of the Empire which have not accepted the Imperial Postal Order scheme.

During the year 2,726,000 British postal orders, representing an amount of 1,717,000*l.* were issued and 1,659,492 orders, amounting to 966,850*l.* were paid in various parts of the Empire excluding the United Kingdom. These numbers show increases of 58·9 and 123·0 per cent. respectively on those for the previous year. The value of the Colonial postage stamps affixed to postal orders was 2,349*l.*

The total amount of money remitted through the Post Office by means of Money Orders and Postal Orders during the year 1908-9 was over 94,000,000*l.*

OLD AGE PENSIONS.

The Old Age Pension Act 1908 provided for the payment of the pensions weekly; and Your Lordships having directed that the money should be paid through the Post Office, a Committee composed of representatives of the Treasury, the Inland Revenue, the Local Government Board and the Post Office drew up a scheme providing for payment by means of Orders of a special pattern but resembling a Postal Order in general appearance.

It gives me great satisfaction to report that the arrangements, which were necessarily planned at short notice, were carried out with complete success, a result due, to a considerable extent, to the hearty and sympathetic co-operation of the Postmasters and their staff throughout the United Kingdom.

The first payments took place on New Year's day 1909; and during the three months ended the 31st of March 7,925,150 Old Age Pension Orders were cashed representing a total sum of 1,904,722*l.*

In addition to paying the pensions after they had been granted, the Post Office furnished (and continues to furnish) information and assistance to any person desiring to make an application for an Old Age Pension.

LOCAL TAXATION LICENCES.

The Finance Act of 1908, which transferred from the Inland Revenue Department to the County and County Borough Councils the power to levy duties on certain Local Taxation Licences in England and Wales, has added to the work of the Post Office. The change took effect on the 1st January 1909 under the authority of the Order in Council of the 19th October 1908; and since that date certain licences previously issued by the Inland Revenue Department have been issued exclusively by the Post Office. See also Appendix E, p. 54.

In the quarter ended the 31st March 1909 the number of Licences issued at Post Offices in England and Wales was 2,198,928, of the total value of 1,229,983*l*. The amount collected has been duly distributed by the Post Offices to the 136 County and County Borough Councils concerned.

In order to meet the convenience of the County Councils, I have, in certain instances, appointed a County Council Officer to act as "Licence Officer" in the administrative area of the Council. These officers are empowered to issue licences of the descriptions sold by the Post Office to residents in the administrative area of their Council.

POST OFFICE SAVINGS BANK.

The deposits and withdrawals made during the year ended the 31st of December 1908 are shown in the following table, together with the corresponding figures for the previous year:— Statistics. See also Appendix J, pp. 64-71.

Year.	Deposits.		Withdrawals.	
	No.	Amount.	No.	Amount.
1907	18,771,969	£ 44,217,288	9,308,247	£ 46,433,632
1908	18,379,991	44,770,782	9,922,169	45,395,400

The amount withdrawn during the year exceeded the amount deposited by 624,618*l*. In 1907 the amount withdrawn exceeded the amount deposited by 2,216,344*l*.

The interest credited to depositors in 1908 was 3,772,755*l*. as compared with 3,719,975*l*. in 1907; and the total sum standing to the credit of depositors on Savings Bank Account on the 31st December 1908, was 160,648,214*l*. an increase of 3,148,137*l*. in the year. In 1907 the increase was 1,503,681*l*. only.

Of the 9,922,169 withdrawals, 5,910,485, for a total amount of 8,919,522*l.*, were made "on demand," the greatest number made on one day being 55,485 on the 18th of April, when the sum paid was 84,624*l.* Withdrawals by telegraph, where payment is effected on the day of application, were made in 125,401 cases, and withdrawals by return of post, where payment is effected on the day following that of application, in 18,216 cases. The numbers show an increase as compared with the year 1907 of 2,287 and 607 respectively.

The number of accounts opened during the year was 1,657,131, and 1,331,435 accounts were closed, the net result being an increase of 325,696 accounts. In the previous year 1,674,586 accounts were opened and 1,314,815 accounts were closed, an increase of 359,771.

The total number of accounts remaining open on the 31st of December 1908 was 11,018,251. Their distribution as regards England and Wales, Scotland and Ireland, the average amount to the credit of each depositor, and the proportion of depositors to population are shown in the following statement:—

		On 31st December 1908.			
		Number of Depositors.	Total Amount to Credit of Depositors.	Average Amount to Credit of each Depositor.	Proportion of Depositors to Population.
			£	£ s. d.	
England and Wales	-	9,956,540	143,160,340	14 7 7	1 in 3·56
Scotland	-	515,151	6,651,414	12 18 3	1 in 9·37
Ireland	-	546,560	10,836,460	19 16 6	1 in 8·00
United Kingdom	-	11,018,251	160,648,214	14 11 7	1 in 4·05

The average amount standing to the credit of each depositor shows a further decrease of 3*s.*

Accounts of Societies.

During the year 227 accounts in the Post Office Savings Bank were opened by Friendly Societies as against 226 in 1907. The accounts opened by Charitable, Provident and Trade Societies numbered 2,602 against 2,592 opened during 1907.

The accounts opened under the provisions of the County Courts Acts continue to show a slight decline in number, viz.—216 with deposits of 16,432*l.* as compared with 244 with deposits of 20,333*l.* in 1907. The accounts opened under the Workmen's Compensation Acts show a considerable increase in number, 5,113 with deposits of 445,518*l.* being opened as compared with 1,764 accounts with deposits of 144,820*l.* in 1907. The increase is accounted for by the operation of the Workmen's Compensation Act 1906 which came into force on the 1st of July 1907.

Public Trustee Act 1908.

The Public Trustee Act 1908 affords additional facilities for the use of the Post Office Savings Bank by the Public Trustee.

No Trustee Savings Banks were closed during the year 1908; but a sum of 15,570*l.* was transferred from open Banks to the Post Office Savings Bank. On the other hand a sum of 63,027*l.* was transferred from the Post Office Savings Bank to Trustee Savings Banks during the year as compared with 59,022*l.* in 1907. Trustee Savings Banks.

There are now 23 Foreign and Colonial Government Savings Banks participating in the arrangement with the British Post Office Savings Bank made under the provisions of the Savings Bank Act 1904 for the transfer of accounts. During the year 1908 the sum of 174,196*l.* was transferred under the arrangement to the British Savings Bank, and the sum of 44,532*l.* was transferred in the reverse direction. Transfers with the Colonies and Foreign Countries.

The system under which soldiers stationed abroad are enabled to remit money for deposit in the Post Office Savings Bank through the War Office Public Accounts continues to work satisfactorily. During 1908 there were 27,999 deposits, amounting to 43,301*l.* The London County Council continues to deposit in accounts in the Post Office Savings Bank certain scholarship grants made quarterly or half yearly to pupils, and salaries and allowances to pupil teachers. In connexion with this scheme 40,847 deposits amounting to 187,212*l.* were made during the year; but a large proportion of the money deposited is withdrawn within a short period of the date of deposit. Encouragement of thrift.

There has been no appreciable change in the number of Penny Banks investing their funds in the Post Office Savings Bank, or in the number of schools making use of the Stamp Deposit System. More than 5,000 schools have adopted this method of encouraging scholars to save pence.

The average price of Government stock was rather higher than in 1907; and the number and amount of the investments made by depositors in the year 1908 shows a marked decrease as compared with the year 1907 when the average price was abnormally low. For the same reason no doubt the sales of stock increased. Government Stock.

The following is a statement of the number and amount of investments and sales, and the average price of Consols in each of the last five years:—

Year.	Investments.		Sales.		Average price of Consols.
	No.	Amount.	No.	Amount.	
		£		£	
1904 ...	39,633	2,507,546	18,848	1,131,543	88½
1905 ...	32,301	2,212,285	22,824	1,507,219	89½
1906 ...	39,134	2,674,494	20,004	1,349,044	88½
1907 ...	44,652	3,028,194	19,168	1,232,252	84½
1908 ..	29,519	1,993,174	24,467	1,671,512	86⅓

The number of Stock certificates with coupons for dividends annexed obtained for depositors during the year 1908 was 57, representing a sum of 11,200*l.*, as compared with 67 certificates,

representing a sum of 14,800*l.*, obtained in 1907. The transfers of stock to accounts opened for depositors at the Bank of England amounted to 214,856*l.*

The total number of stockholders on the 31st of December 1908 was 153,262, and the stock held amounted to 20,628,985*l.*, being a decrease in the year of 968 stockholders, and an increase of 95,088*l.* stock.

Annuities
and Life
Insurances.

The number of Immediate Annuities granted in 1908 was 1,812, for sums amounting to 41,053*l.*, as compared with 1,685 for 37,940*l.* in 1907. The amount of purchase money received was 513,446*l.* The number of such Annuities in existence at the close of the year was 23,417, the aggregate annual amount being 687,566*l.* The number of Deferred Annuities granted was 137, the amount being 2,560*l.* This class of Annuity has never been popular.

It may be mentioned that a holder of a Post Office Savings Bank Annuity died last year at the age of 103, having been born in September, 1805.

The number of Life Insurance contracts granted in 1908 was 421, the total sum insured being 21,535*l.*, a decrease of 71 in number and 3,377*l.* in amount as compared with the figures of the previous year.

The number of insurance contracts in existence on December 31st 1908 was 13,102, for the sum of 756,999*l.*

Expenses of
Management.

The net expenses of management of the Post Office Savings Bank for the year 1908 amounted to 679,678*l.*; and the average cost per transaction on the total number of deposits and withdrawals works out at 5·76*d.*, as compared with 5·01*d.* in 1907. This is an apparent increase of cost; but as your Lordships are aware, the expenses of management for the year 1908 were swollen by a non-recurrent expenditure of over 60,000*l.* in order to bring up to date certain payments to sub-postmasters which had previously always been brought to account in arrear.

Improvements in the pay of the Staff, resulting partly from the recommendations of the Select Committee on Post Office Servants and partly from the modifications introduced by your Lordships in the scale of payment of Second Division Clerks, also increased the expenses of management for the year by over 11,000*l.*

Mainly in consequence of the exceptional causes above mentioned, the expenditure (including interest paid to depositors) exceeded the income in 1908 by 161,443*l.* as compared with 86,247*l.* in 1907.

TELEGRAPHS.

Statistics.
See also
Appendix
H., pp.
61-63.

During the year ended 31st March 1909, 84,825,000 telegrams passed over the Post Office wires, as compared with 85,969,000 in 1907-8, a decrease of 1·3 per cent.

As has been pointed out in previous Reports, this reduction is due to the increasing use of the telephone, especially for local communication.

The following table gives the number and value of each kind of telegram, with the corresponding totals for the previous year:—

Class of Telegram.	Number.			Receipts.		
	1907-8.	1908-9	(+) Increase or (-) Decrease.	1907-8.	1908-9.	(+) Increase or (-) Decrease.
Ordinary - - -	70,561,000	69,445,000	— 1,116,000	£ 2,179,857	£ 2,140,189	— 39,668
Press - - -	4,408,000	4,273,000	— 135,000	140,008	140,061	+ 53
Foreign - - -	9,147,000	9,421,000	+ 274,000	416,356	428,821	+ 12,465
Railway free - -	1,437,000	1,239,000	— 198,000	—	—	—
Railway reduced rate -	28,000	24,000	— 4,000	525	436	— 89
Government free - -	388,000	423,000	+ 35,000	—	—	—
Totals - - -	85,969,000	84,825,000	— 1,144,000	2,736,746	2,709,507	— 27,239

The estimated value of the Railway and Canal free telegrams is 48,650*l.* as against 56,550*l.* in 1907-8, and that of the Government free telegrams 21,700*l.* as against 20,150*l.* in 1907-8.

I was glad to be able to obtain your Lordships' sanction to the special concession to officers and men of the Royal Navy of being allowed to count the letters "H.M.S." as one word in the address of inland telegrams intended for His Majesty's Ships. I have reason to believe that the concession has been greatly appreciated.

During the year the Telegraph System has been extended to 215 Post Offices in country districts and in the areas of the larger towns. Guarantees have been given for 158 of these new telegraph offices, in 74 cases by local authorities and in 84 cases by private persons. There are now in the United Kingdom 11,077 telegraph offices at Post Offices, and 2,413 at railway stations and at other public places. New
Telegraph
Offices.

The Metropolitan Intercommunication Switch system, the completion of which was referred to in my last report, has worked satisfactorily during the year; and the reduction in the time taken in the transmission of telegrams from one part of London to another has not only been maintained but somewhat improved upon now that the staff has had further experience with the system. New and
improved
apparatus
and
methods.

During the year much attention has been given to forms of telegraph apparatus which are either of recent invention or are at present comparatively little used in the Post Office, such as the Baudot, the Creed, the Hughes, the Murray, the Murray-Multiplex, the Gell and Kotyra Keyboard perforators and the Kotyra and Yetman keyboard transmitters and the Pollak Virag system. Experiments have also been made in Wheatstone working reorganised to meet the conditions resulting from the improvement of keyboard perforators and the introduction of Morse-Slip gumming. If these experiments are generally successful considerable economy of wire will be possible on long lines, and continuous high-speed Wheatstone working will be attended with much advantage.

Under-ground Telegraph Lines.

The underground telegraph line between Glasgow and Edinburgh has been completed with the exception of a short section within the City of Edinburgh; the line running southwards from Newcastle has reached Stockton-on-Tees; the line to the west has reached Penzance; the extensions from Birmingham and Bristol have reached Worcester and Berkeley respectively. During the present year a pipe is to be laid southwards from Stockton to Leeds, where the underground line from London via Warrington and Manchester ends; the line to the West will be completed to Porthcurno where cables are landed; and from Berkeley a pipe will be laid northwards to Gloucester, another step towards the connection of Birmingham with Bristol. A second underground line between London and Birmingham, which has been in progress for some time, will be completed, and a pipe will be laid from Chatham to Canterbury for the extension of the underground line now running from London to Chatham, the intention being to provide underground connections with the landing places of the principal submarine cables to the Continent.

FOREIGN TELEGRAPHS.

Statistics. See also Appendix H., p. 63.

The number of foreign telegrams sent to and from the United Kingdom during the year (exclusive of certain telegrams dealt with entirely by Cable Companies) was over 9,421,000, an increase of nearly 275,000 as compared with the preceding year.

Fast-speed Apparatus.

During the year practical trials of fast-speed apparatus have been made on some of the Anglo-Continental wires, with a view to provide additional accommodation for the growing traffic; but the results have hardly been so satisfactory as was hoped. Another kind of apparatus, which seems to promise better results, is about to be tried.

Telegraph Codes.

As mentioned in my last report, an International Telegraph Conference met at Lisbon during the early part of last year. One result of its deliberations was the institution of a system under which telegraph codes may be submitted to the British, French and German telegraph administrations for examination and for certification (if approved) as conforming with the International Regulations in the matter of pronounceability. This measure was adopted, as I explained last year, with the object partly of checking the growing tendency of certain code makers to abuse the liberal provisions of the International Regulations as to the use of *artificial* words, by inserting uncouth and often unpronounceable combinations of letters in their codes. The adoption of such words greatly increases the difficulty of signalling telegrams and the risk of errors. The new arrangement will also give the author and the users of a code a guarantee not previously available that the words contained in the code will be accepted without question as regards pronounceability at every Telegraph Office throughout the International Telegraph Union. The examination of the codes will be carried out by a Committee composed of representatives of the three Administrations. The Committee in question has held a preliminary meeting and will shortly begin the actual examination of codes.

The reduced rates of charge for telegrams between England and many Foreign Countries arranged at the Conference came into operation on the 1st July 1909. A list of these reductions was given in my last report.

The recent International Press Conference, in the course of Cable Rates. its highly successful meetings, devoted considerable attention to the question of the reduction of cable rates, and especially of the rates for press messages. His Majesty's Government exhibited their practical sympathy with the wishes of the Conference in this respect by co-operating with a Committee appointed by the Conference to consider the question, and also by co-operating with Canada, Australia and New Zealand, through their representatives on the Board of the jointly-owned Pacific Cable, in reducing the rate allocated to that cable for press messages by one-half. The result has been that the rates for press messages, not only to Australia and New Zealand, but also to India and the Cape, have been reduced from 1s. to 9d.

The arrangements made in the year 1906-7 for the trans- Messages by mission of messages between the United Kingdom and South Telegraph Africa by telegraph at each end, and by post between Southampton and by Mail. and Cape Town, have not been largely used, the number of messages sent in this way during last year having been 260 only. I have, however, thought it well to extend the arrangements to messages between the United Kingdom and India; and I have no doubt that the arrangements will be more largely used as their utility becomes apparent.

WIRELESS TELEGRAPHY.

Since my last report 28 licences (covering 48 installations) Licences have been granted for stations in the United Kingdom under the under the Wireless Telegraphy Acts. The whole of these were for experi- Acts of 1904 mental purposes. The following table shows the total number of and 1906. licences for land stations now in existence :—

—	No. of Licences.	No. of Stations.
Commercial - - - - -	8	25
Private business (including lightships)	5	11
Experimental - - - - -	105	164
Minor cases (experimental) in which permission has been given by letter	83	—

Up to 31st March last, 15 licences had been granted to ship-owners covering 72 ships. Other licences have been issued since that date. The total number of British ships of the mercantile marine now equipped with wireless apparatus, or in course of equipment, is more than 100. The great majority of these are Atlantic liners.

Radio-
telegraphic
Convention.

At the date of my last report the International Radiotelegraphic Convention signed at Berlin in November 1906 had been ratified by His Majesty's Government (which had also adhered to the Convention on behalf of the whole of the British Empire except Newfoundland and the Orange River Colony) and by the great majority of the other signatory Powers, and had just come into operation. It has worked smoothly and satisfactorily, and I am glad to find that its effect on the business of the Marconi Company, so far from being injurious as they feared, is stated in a recent report to have proved as I anticipated distinctly advantageous. The Company have co-operated loyally with the Government in carrying out the provisions of the Convention.

The Marconi
Company's
telegrams.

The Post Office has continued during the year to collect and deliver the Marconi Company's radiotelegrams to and from ships at sea under the arrangements settled in 1904. The total number of outward radiotelegrams dealt with during the year was 1,817, as compared with 1,725 in 1907-8, and of inward radiotelegrams 22,732, as compared with 20,067. As mentioned in my last report, it has been possible, since the Radiotelegraphic Convention came into force, to receive radiotelegrams (with the charges prepaid) from foreign countries for transmission to ships through the radiotelegraphic stations open for public traffic in this country, and to forward radiotelegrams from this country to foreign stations for onward transmission to ships.

Bolt Head
Station.

The Post Office station at Bolt Head, to which reference was made in my last report, was opened for communication with ships in December last. The installation, which was provided by the Marconi Company, as contractors, after tenders had been obtained from the principal Wireless Telegraph Companies, is working satisfactorily. The station is proving of great value in giving the Post Office practical experience of the working of wireless communication with ships, and in assisting towards the administration of the International Convention and Regulations.

Other
Wireless
Telegraph
Stations.

In addition to the Post Office station at Bolt Head and the Marconi Company's Stations, three Stations in the United Kingdom are open for public correspondence with ships—namely, a station at Cullercoats erected by the Amalgamated Radio-Telegraph Company; a station at Heysham Harbour erected by the Midland Railway Company (for communication with their Douglas and Belfast steamers); and a station at Parkeston Quay erected by the Great Eastern Railway Company (for communication with their Hook of Holland and Antwerp steamers).

The Post Office Stations for communications between Tobermory and Loch Boisdale (Marconi system), and between Hunstanton and Skegness (De Forest system), which were erected in 1906, have continued to work satisfactorily. The former pair of stations on one occasion carried as many as 300 telegrams during the day.

Trans-
Atlantic
service.

The Marconi Company hold a licence for a station at Clifden which is used for Wireless Telegraphy across the Atlantic. A limited amount of commercial and press business is transacted, the traffic being forwarded to and from Clifden as inland telegrams.

Negotiations are in progress between the Post Office and the Government Marconi Company and Iloyds, whereby the Post Office will acquire purchase all their Land Stations for ship-and-shore communication.

TELEPHONES.

The following table gives the chief particulars of the Trunk Line Trunk lines. System and Service during the year ended the 31st March 1909, See also as compared with the particulars for the year 1907-8 :— Appendix M., p. 84.

—	1908-9.	1907-8.	Increase.
Trunk Line Exchanges - -	598	551	47
Trunk Circuits - - -	2,526	2,385	141
	£	£	£
Capital Expenditure to end of year	4,682,796	3,946,658	736,138
Conversations over inland trunk lines	23,502,024	21,993,113	1,508,911 (6·86%)
	d.	d.	d.
Average payment per conversation	5·86	5·84	·02
	£	£	£
Gross revenue from inland calls	573,883	535,104	38,779 (7·25%)
Receipts from Continental calls	22,125	21,187	938

During the year 102 Post Office Telephone Exchanges were opened in the provinces at the following places:—

England and Wales.

*Abercrave.	*Framlingham.	*Oakhill.
*Allendale.	*Forest Row.	Onibury.
Beamish.	*Glemsford.	*Quidenham.
*Beddgelert.	*Goldhanger.	Riding Mill.
Benenden.	*Great Baddow.	Rushyford.
*Bishop's Castle.	Greatford.	Saundersfoot.
Blandford.	*Handcross.	*Shaftesbury.
Bromfield.	*Henley-in-Arden.	*Shefford.
*Castle Donington.	*Hillington.	Sissinghurst.
Castle Hedingham.	Holmes Chapel.	*Standford.
Chard.	Ilminster.	*Stanton.
*Charmouth.	*Kenton.	*Stratton - on - the -
*Cleobury Mortimer.	*Kington.	Fosse.
*Clifton.	*Liphook.	*Syresham.
*Coleman's Hatch.	*Long Melford.	Tarrington.
*Cottenham.	Longtown (Cumber-	*Trumpet.
*Coychurch.	land).	Washington Village.
*Craven Arms.	*Lyme Regis.	Weaverham.
*Danbury.	*March.	*Whitchurch(Hants).
*Dane End.	*Masham.	Wickham Market.
*Dereham.	*Mellis.	Wormbridge.
Etchingham.	*Millom.	*Ynysddu.

* The Exchanges marked with an asterisk were opened under guarantees given by local authorities or persons interested in the extensions.

Scotland.

Alyth.	Crosshill (Maybole)	Kirkmichael
*Balmullo.	Dalbeattie.	(Maybole).
Borthwickbrae,	Dechmont.	Lilliesleaf.
Burnfoot.	Glenfarg.	Meigle.
Castle Douglas.	Insch.	Mirthly.
*Causewayend.	Kirkmichael	*Newtyle.
*Cleish.	(Blairgowrie).	*Spittallfield.
Crail.		*Symington.

Ireland.

*Ballycastle.	Cullybackey.	Maryborough.
*Bellaghy.	Enniskillen.	*Monaghan.
*Castledawson.	*Kilkenny.	*Navan.
*Charleville.	*Kilmallock.	*Toomebridge.
*Clara.	*Lisbellaw.	*Tullamore.
Coagh.	*Magherafelt.	*Tulnacross.

Besides these 102 exchanges, 55 public call offices connected with the Post Office trunk line system were opened at places where the number of prospective subscribers was not sufficient to warrant the opening of an exchange. As I have before stated, it is found that a call office often becomes the nucleus of a small exchange.

Rural Call
Offices.

The extension of the telephone system by means of Rural Call Offices has been greatly appreciated in many districts. These call offices are served by adapting for local telephone working existing telegraph wires, which as a rule are not suitable for conversations with very distant places. They are intended primarily to afford local communication between market towns and the neighbouring villages, although in many cases conversation is possible with places within a radius of from fifty to a hundred miles. During the past year considerable additions have been made to the rural system in the districts adjacent to the following places. In *England*: Cranbrook, Uckfield, Malmesbury, Kingston, Liskeard, Glastonbury, Taunton, Devizes, Spalding, Sleaford, Peterborough, Stamford, Cambridge, Woking, Bellingham, Thirsk, Whitchurch (Salop), Brackley, Banbury, Leicester, Malton, Ambleside, Atherstone, Newport (Salop), Derby, Lichfield, Buckingham, Stony Stratford, Market Drayton, and Horncastle; in *Wales*: Pwllheli; in *Scotland*: Alyth, Blairgowrie, Brechin, Callender, Dunkeld, Fraserburgh, Kelso, Kirriemuir, Maybole, and Rothesay.

Number of
Exchange
subscribers.
See also
Appendix
M., p. 84.

The total number of subscribers to the Post Office Provincial Telephone Exchanges on the 31st of March 1909 (excluding those at Glasgow and Brighton) was 12,618, as compared with 11,579 on the 31st March 1908, and the number of exchange telephones rented increased during the year from †15,937 to 17,621.

This increase in the number of subscribers is the result of the normal development of the Provincial Telephone System of the Post Office.

*The Exchanges marked with an asterisk were opened under guarantees given by local authorities or persons interested in the extensions.
† Amended figures.

The number of the subscribers on the Exchange system Glasgow purchased from the Corporation of Glasgow was 8,525 on the 31st March 1909, and the number of telephone stations (i.e., telephones communicating with exchanges) was 11,595. The number of subscribers on the system purchased from the Corporation of Brighton was 1,211 on the same date, and the number of telephone stations 1,721. The fact that subscribers at current rates to the systems of the Post Office and the National Telephone Company enjoy free intercommunication with all the subscribers of both systems has reduced the number of new lines to some extent, because subscribers are no longer obliged to rent two exchange lines to obtain a complete service. The arrangement is, however, convenient and economical for the public. It has not yet been possible to overcome all the difficulties resulting from the existence of two separate exchange systems in each place, but arrangements have been made with the National Telephone Company for the consolidation of the existing plant and exchanges in Glasgow so as to form a coherent single system. At present many of the exchanges are duplicates serving the same localities. Underground wires will gradually be substituted in the City of Glasgow for the present overhead wires and cables. A new Post Office Central Exchange fitted with a Central Battery Switchboard of the latest type and designed to accommodate 10,000 lines is now being constructed at a cost of about 100,000*l*. When the new Exchange is opened the present Central Exchange purchased from the Corporation will be closed, as the existing Switchboard worked on the "Call Wire" system cannot meet the increasing requirements of the Glasgow Telephone Service with efficiency or economy.

The following table, based on returns furnished by the Corporations concerned, gives the number of telephones connected on the 31st March last with the exchanges of the two licensed municipal telephone systems which have maintained an independent existence :—

Name of Municipality.	Date of opening Exchange System.	No. of Telephones.	No. of Lines.
Hull - - - - -	October 1904 -	2,445	1,850
Portsmouth - - - -	November 1902	2,566	1,987

According to the statistics furnished by the Guernsey States Telephone Department, the number of stations connected with the States' system was 1,755 on the 31st December, 1908, showing an increase of 79 during the previous twelve months. The number of junction lines was 36.

The rentals in respect of private wires provided by the Post Office amounted to 195,243*l*., as compared with 185,269*l*., for the preceding year.

Private
wires. See
Appendix
M, p. 85.

London
Telephone
Service.

The following tables compare particulars regarding the London Telephone Service for the year 1908-9 with corresponding particulars for the previous year—

		31st March, 1909.	31st March, 1908.	Remarks.
	Post Office Subscribers' Telephones	55,125	†48,736	Additional Subscribers are being connected at the rate of 140 a week.
	Call Offices - -	682	534	Calls from Call Offices increased 34·25 % during the past year.
Growth of under-ground system in London.		Miles.	Miles.	Increase during year.
	Underground pipes -	2,417	2,227	Miles. 190
	Length of wires ...	447,797	383,070	64,727
	Length of wires rented by National Telephone Company	124,571	95,862	28,709
	Wires provided for Telegraphs, Private Wires, etc.	41,144	43,548	The apparent decrease is due to the fact that some of the wires which were spare in the previous year were afterwards diverted from the Telegraph to the Telephone service.
Mileage of Wire in London.	Mileage of Subscribers' lines and junction lines	146,883	136,979	9,904
	Mileage of wires available for development of telephone system	131,974	102,357	29,617

New Exchanges have been established during the year at Barnet and Finchley.

Income and
expenditure

Accounts for the year ended 31st March 1909 of the income and expenditure relating to the Trunk system, the London service and the Provincial Exchange system will be found in Appendix P (pages 96-101).

Telephone
royalty.

The amount of royalty received during the year from the National Telephone Company was 293,828*l.*, and from other licensees 2,618*l.*

† Amended figures.

The estimated figures given below show the extent to which the telephone is being used for sending messages for onward transmission as telegrams and express letters :—

	1907-8.	1908-09.	Increase per cent.	Use of telephone for postal and telegraph purposes.
Telegrams - - -	4,089,900	4,476,000	9.4	
Express Letters - -	116,000	142,600	22.9	

The number of messages sent to the Post Office by telephone for onward transmission as ordinary letters decreased from 5,300* in 1907-8 to 4,400 in 1908-9. The telegrams delivered during the year to addressees over private Telephone circuits numbered 2,079,000.

WAYLEAVES.

The Telegraph (Construction) Act, 1908, to which I referred in my last report, provided further statutory powers for the purpose of dealing with wayleave and tree-cutting difficulties. These powers, although somewhat restricted, have already proved of material value, particularly the provisions respecting tree-cutting, which have made it possible in many places to replace aerial cables by open wires with a marked gain in the efficiency of the Trunk telephone circuits.

I desire to express my obligation to the landowners and others concerned for the way in which, in nearly every case, they have co-operated with us.

There has, I regret to say, on the other hand, been little diminution in the opposition on the part of the local authorities and others to the erection of overhead lines, although, as I explained last year, in the present state of electrical science it is not practicable to place trunk telephone wires underground without in a great measure reducing their effectiveness.

The mileage of wire in the Post Office system is now as follows :—

	Miles.
Public telegraph wire - - -	304,562
Telephone wires - - -	548,694
Leased and private wires - -	193,656
Total - - -	1,046,912

These wires may also be classified as :—

	Miles.
Aerial - - - - -	412,434
Underground - - - -	623,930
Submarine - - - - -	10,548
Total - - - - -	1,046,912

* Amended figure.

TELEGRAPH AND TELEPHONE ACCOUNTS.

See also

Appendix N,
pp. 86-89
and
Appendix O,
pp. 90-95.

As I stated in my last Report, a Committee, on which the Treasury was represented, was appointed to consider in what manner the various accounts and returns presented to Parliament in connection with the Telegraph and Telephone services could be modified or supplemented so as to show more clearly the financial results of the two undertakings. In accordance with the recommendation of the Committee, the cost of the Telephone Service is now shown separately from the cost of the Telegraph Service in the Post Office Estimates presented to Parliament, as well as in the Appropriation Account of the Post Office Vote; and the receipts of the Telephone Service are now distinguished from the receipts of the other Telegraphic Services of the Post Office in the published Revenue Accounts.

TELEGRAPHIC MONOPOLY.

By the decision, on appeal, of the House of Lords in the case between the Postmaster General and the National Telephone Company, the Postmaster General has secured a further definition of his monopoly in Telegraphs. The National Telephone Company claimed that fire-alarm systems and circuits between one person and another carrying on distinct businesses (generally known as A to B wires) were outside the Postmaster General's monopoly whether they were worked by telephones or not. The House of Lords decided that such wires are within the monopoly. This decision has considerable importance in connexion with the approaching transfer of the National Telephone Company's business to the Postmaster General.

POST OFFICE BUILDINGS.

Operations
in London.

During the year under review the erection of the new General Post Office (King Edward's Building) has made good progress, and it is hoped to complete it by Midsummer 1910. It has been necessary, owing to the growth of the Headquarters Staff, to move parts of the Accounting and Engineering Staffs from the General Post Offices North and West to premises in West Smithfield, E.C., which have been rented for the purpose.

In the General Post Office South additional space has been set free for telephone purposes by the removal of the Central Metropolitan Engineering Staff from that building to the disused London Bridge Parcel Office; and in order that the whole of the General Post Office South may ultimately be devoted to telephone work it is proposed to remove the Money Order Department to other quarters. For this purpose a site has been acquired in Manor Gardens, Upper Holloway, and plans of the new building are practically settled. The equipment of the Central Power Station at Blackfriars is now approaching completion.

As regards London offices, satisfactory progress has been made with the erection of the new Western District Office, and plans have been settled for the enlargement of the South Eastern, South Western, Western Central, and Battersea District Offices. A scheme for enlarging and rebuilding the North Western District Office has been under consideration.

The first block of the new Telegraph Stores Depot at Birmingham has been occupied and the second block is approaching completion. New Head Post Offices have been completed at Birkenhead, Canterbury, Chelmsford, Dewsbury, Stoke-on-Trent, Warrington and Hull; and an extensive enlargement of the Head Post Office at Nottingham has also been completed. The erection of a new Letter Sorting Office for Manchester, a new Head Post Office for Sheffield, and extensions of the General Post Office at Edinburgh and the Head Post Office at Bristol are in progress. Building operations in connection with an extension of the Head Post Office at Newcastle-on-Tyne have been begun, and plans for the enlargement of the General Post Office at Dublin and the Head Post Office at Belfast have been settled. Plans for an enlargement of the Head Post Office at Glasgow and Birmingham are under consideration.

New Telephone Exchanges at Finchley, Barnet and Kingston have been completed and occupied; and progress has been made with the provision of other Exchanges in London and the Provinces.

During the year 53 new buildings specially erected for Post Office purposes were completed and taken into occupation; and the leases of 28 existing buildings were taken over by the Department after alterations had been effected to adapt them for Post Office purposes. Additional accommodation for the Surveying and Engineering Branches has been provided in various parts of the country. Sixty-one Crown Post Offices have been enlarged or improved and 97 are in course of erection or enlargement. Preliminary arrangements have also been made in many cases for enlarging Crown Post Offices or providing new ones.

The expenditure out of the Post Office Vote on the purchase of sites and buildings during the year amounted to 55,409*l.*, of which 12,539*l.* was for London.

During the year expenditure by His Majesty's Office of Works and by the Board of Public Works in Ireland on the erection of new Post Office buildings and on the enlargement and maintenance of existing buildings amounted to 596,902*l.* in Great Britain and 22,772*l.* in Ireland.

POST OFFICES AND LETTER BOXES.

The total number of Post Offices open on the 31st March 1909 was made up as follows:—

—	London.	England and Wales.	Scotland.	Ireland.	Total.
Head Offices - -	11	590	125	104	830
Branch Offices - -	112	137	30	9	288
Town Sub-Offices -	936	4,664	397	228	6,225
Country Sub-Offices -	—	11,877	1,870	2,682	16,429
Total - -	1,059	17,268	2,422	3,023	23,772

Of these offices 177 were opened during the year.

Money Order and Savings Bank business is transacted at 15,257 offices, and Telegraph business at 11,077, as well as at 2,413 offices at railway stations and other public places. The number of letter boxes was increased during the year from 43,025 to 44,134.

STORES, FACTORIES AND CONTRACTS.

Contracts
for Irish
Stores.

Endeavours have been made during the year to induce firms in Ireland to tender for the supply of Post Office stores for use in Ireland; but it is too early yet to report as to results.

Home
grown
telegraph
poles.

The further efforts of the Post Office to encourage the supply of home-grown poles and scantling have not, unfortunately, been attended with success.

Awards
Committee.

The Awards Committee which, as your Lordships are aware, was constituted with the view of encouraging workmen and other Post Office servants to bring forward suggestions for improvements in machinery, tools, apparatus, etc., continues to justify its establishment; and there can be no doubt that since its operations began the Post Office workmen have displayed greater interest in their work.

Contracts.

The systematic inspection of the conditions of employment under Post Office Contractors has been continued. The "Fair Wages" clauses have been extended and improved. Contract work, so far as possible, has been distributed evenly throughout the year and delivery accepted at slack times.

A clause prescribing Minimum Wages for women and girl workers has been introduced, by way of experiment, into Post Office head-dress and clothing contracts.

STAFF.

See also
Appendix F,
pp. 55-56.

The number of persons on the establishment of the Post Office on the 31st March 1909 was 93,768, of whom 13,747 were women. The number added during the year was 2,992. In addition there were 114,179 persons, including assistants in the employment of Sub-Postmasters, filling unestablished situations (some of them employed only for a portion of the day) of whom 31,076 were women. The number added during the year was 1,358. The total number of persons employed wholly or in part in the Post Office on the 31st March 1909 was thus 207,947.

Dismissals.

The number of established officers dismissed during the year was 255, whilst 229 were deprived of good-conduct stripes. The corresponding figures for 1907-8 were 318 and 239. Thirty-two per cent. of the dismissals were on account of dishonesty and 32 per cent. were for intemperance. Sixty-six per cent. of the losses of good-conduct stripes were the result of intemperance.

During the year 72 grants, amounting to 1,017*l.* 4*s.* 6*d.* in all, Retiring were made from the fund placed at my disposal by Parliament gratuities. for awarding gratuities on retirement to unestablished officers who are in poor circumstances and are not eligible for the benefits of the Superannuation Act of 1887.

SELECT COMMITTEE ON POST OFFICE SERVANTS.

The work of carrying into effect the changes adopted in con- General
nection with the recommendations of the Select Committee of the revision.
House of Commons to which I referred in my last report, has been continued throughout the year. The labour involved has been very considerable; as the effect of the Committee's recommendations on the pay and conditions of service of more than 200,000 officers employed in all parts of the United Kingdom has had to be carefully weighed. The revision is now nearly complete.

That part of the general revision consequent on the recom- Classifica-
mendations of the Committee which deals with the classification tion of
of the Head Post Offices in the provinces calls, perhaps, for offices.
special mention. The general result was given in the Return
"Post Office (Changes in Wages, &c.)," ordered by the House
of Commons to be printed on the 2nd of July 1908. Further, the
question of the sub-offices as a whole has been considered, and
the final result is that out of a total of 4,491 sub-offices at
which full-time postmen are employed, 3,746 offices have been
granted a higher scale of pay.

The effect of the reclassification has been as follows :—

Indoor Force (Male).

522	Head Offices—	Maximum pay raised.
294	" "	Maximum pay unaltered.
12	" "	Maximum pay unaltered for existing force but reduced for new entrants.

Indoor Force (Female).

606	Head Offices—	Maximum pay raised.
210	" "	Maximum pay unaltered.
12	" "	Maximum pay unaltered for existing force but reduced for new entrants.

Outdoor Force.

672	Head Offices—	Maximum pay raised.
6	" "	Maximum pay unaltered.
150	" "	Maximum pay unaltered for existing force but reduced for new entrants.
3,746	Sub-Offices—	Maximum pay raised.
745	" "	Maximum pay unaltered for existing force but reduced for new entrants.

HEALTH OF THE STAFF.

The health of the Staff during the year was, on the whole, satisfactory.

There was a recurrence of influenza during certain periods of the year, and 23 deaths and 3 retirements were directly attributable to this cause. Fifty-eight deaths and 111 retirements were due to diseases of tubercular origin.

Tele-
graphists'
cramp.

As stated in my last report, I instituted enquiries into the nature and prevalence of the disorder known as "Telegraphists' cramp"—an obscure nervous affection to which telegraphists using the Morse Telegraph Key are liable. The result of these enquiries was not altogether conclusive, as difficulty was experienced in many cases in distinguishing between telegraphists' cramp and other affections which interfere with an operator's power of manipulation.

A wish had been expressed by the Staff that telegraphists' cramp should be added to the 3rd schedule of the Workmen's Compensation Act as a disease in respect of which compensation should be payable; and although the proportion of officers affected was found to be small, I considered it desirable to lay the matter before the Home Office Committee on Industrial Diseases. The Committee recommended that telegraphists' cramp should be added to the Schedule as a case for compensation, and that, so far as Post Office Servants were concerned, the medical officers of the Post Office should be substituted for the certified surgeons appointed under the Factory and Workshop Act 1901, as the persons by whom, in the first instance, the presence of the disease should be certified.

The Secretary of State made an order, dated the 2nd December 1908, in accordance with these recommendations.

ENQUIRY INTO PHYSICAL STRAIN CAUSED BY POSTMEN'S WORK.

As a result of representations made by the Postmen's Federation, I deputed Dr. J. Sinclair, Second Medical Officer to the Post Office, to conduct an enquiry jointly with Dr. D'Arcy Power, nominated by the Federation, into the physical effect of stair-climbing and cycling upon postmen.

As regards stair-climbing, the result of the enquiry was to show that the physical strain produced was not of an abnormal character and was not productive of injury to health. Steps have, however, been taken to obtain permission for postmen to make use of the lifts in large blocks of flats and the amount of stair-climbing has thereby been reduced to a minimum.

As regards cycling duties, Drs. Sinclair and Power made a number of recommendations, most of which have already been carried out. Definite limitations have been imposed on the weight to be carried on a bicycle or tricycle, the daily distance to be traversed and the rate of speed to be maintained, and a searching medical examination has been instituted in order to prevent unsuitable persons from being employed on cycling duty. Various minor regulations have also been laid down.

I feel greatly indebted to the two medical gentlemen in question for having enabled me to place these arduous portions of a postman's daily duty on a satisfactory footing.

The figures in the following table and in the second and succeeding tables of Appendix F. relate to the whole of the Staff at the towns where departmental Medical Officers are employed, viz.: 122,148 men (77,104 established and 45,044 unestablished) and 17,440 women (13,149 established and 4,291 unestablished), making 139,588 persons in all:—

See also
Appendix F.,
pp. 57-59.

	Percentage of staff absent through illness on one occasion or more during the year.		Average amount of sick absence per sick officer (in days).		Average absence per officer employed (in days).	
	Men.	Women.	Men.	Women.	Men.	Women.
1. Established staff—						
London (Chief Office)	60	81	13·3	13·9	7·9	11·2
(Metropolitan Districts)	62	80	14·1	16·6	8·7	13·3
England and Wales (Provinces)	46	60	16·8	17·7	7·7	10·7
Scotland	37	47	14·7	16·8	5·4	7·9
Ireland	52	62	17·8	21·4	9·3	13·2
2. Unestablished staff—						
London (Chief Office)	54	59	9·2	10·4	5·0	6·2
(Metropolitan Districts)	50	42	9·7	17·5	4·9	7·2
England and Wales	35	36	12·5	14·6	4·4	5·2
Scotland	36	23	10·1	16·8	3·6	3·7
Ireland	24	36	11·7	16·4	2·8	5·8

The following table gives particulars with regard to deaths and retirements during 1908 among the whole of the established staff in the United Kingdom:—

	Number of persons.		Average age on death or retirement (in years).		Average length of service (in years).	
	Men.	Women.	Men.	Women.	Men.	Women.
Deaths	263	19	39	32	19	13
Invalided	548	119	45	34	23	14
Superannuated at age of 60 and upwards	228	6	61	60	37	35

The deaths represent a death-rate of 3·4 per 1,000 among men, and 1·4 per 1,000 among women.

The number of women who retired on marriage in 1908 was 351, with an average age of 28 and an average service of nine years.

The number of candidates for Post Office employment examined by the Department's medical officers was 4,478 men and 2,220 women, of whom 205 men (4·6 per cent.) and 204 women (9·2 per cent.) were rejected.

FINANCE.

See also
Appendices
Q., R., S.
and T.,
pp. 102-107.
Posts.

The postal revenue of the year, including the value of services rendered to other Departments, was 18,125,364*l.*, an increase of 29,121*l.* on that of the previous year. The postal expenditure was 13,373,937*l.*, an increase of 264,371*l.* on that of the previous year. The net profit was thus 4,751,427*l.*, or 235,250*l.* less than last year.

Telegraphs

The telegraph revenue of the year, including the value of services rendered to other Departments, was 3,099,724*l.*, a decrease of 1,216*l.*; and the telegraph expenditure, including the interest on the capital—10,867,644*l.*—expended on the purchase of the telegraphs, was 4,218,659*l.*, an increase of 44,776*l.* upon the previous year.

Telephones.

The telephone revenue of the year, including the value of services rendered to other Departments, was 1,522,442*l.*, an increase of 139,262*l.*; and the telephone expenditure was 1,567,570*l.*, an increase of 133,219*l.* upon the previous year. The net deficit on working was thus 45,128*l.*, or 6,043*l.* less than last year.

General.

The net revenue from the postal, telegraph and telephone services combined was 3,587,364*l.*, or 275,199*l.* less than last year. The causes of this falling off in net revenue are (1) the growth of expenditure under the head of salaries, wages, &c., of the staff, and (2) a shrinkage in the rate of increase in postal revenue.

These figures are, necessarily, partly estimated.

I cannot conclude this report without referring to the loss which the Department has sustained by the appointment of the Secretary, Sir Henry Babington Smith, K.C.B., to the Presidency of the National Bank of Turkey. The period which has elapsed since Sir Henry's appointment to the Secretaryship has been one of exceptional strain and difficulty, and I am aware that I express the opinion of your Lordships as well as my own when I record the fact that the public service is deeply indebted to him for the skill and capacity brought to bear on the solution of the complex problems which have arisen.

CONCLUSION.

In conclusion, I desire to express my belief that the efficiency of the service has been fully maintained, and that this result is due to the willing and zealous co-operation in the public interest of all classes of Post Office servants.

I have the honour to be,

My Lords,

Your Lordships' obedient Servant,

SYDNEY BUXTON.

APPENDICES.

APPENDIX A.

STATEMENT showing the ESTIMATED NUMBER of LETTERS, POST-CARDS, HALFPENNY PACKETS, NEWSPAPERS, PARCELS, and TELEGRAMS dealt with, and the Average Number per Head of the Population for the year ended the 31st March, 1909.

	Population.	Letters.		Post-cards.		Halfpenny Packets.		Newspapers.		Parcels.		Telegrams.	
		No.	No. per Head of Population.	No.	No. per Head of Population.	No.	No. per Head of Population.	No.	No. per Head of Population.	No.	No. per Head of Population.	No.	No. per Head of Population.
England and Wales	- 35,450,305	2,482,600,000	70.0	732,300,000	20.7	805,200,000	22.7	157,200,000	4.4	93,656,000	2.6	70,969,000	2.0
Scotland	- 4,826,587	256,900,000	53.2	91,000,000	18.9	102,600,000	21.3	24,400,000	5.1	12,050,000	2.5	8,690,000	1.8
Ireland	- 4,375,047	167,900,000	38.4	36,700,000	8.4	45,400,000	10.4	20,700,000	4.7	7,317,000	1.7	5,340,000	1.2
Totals	- 44,651,939	2,907,400,000	65.1	860,000,000	19.3	953,200,000	21.3	202,300,000	4.5	113,023,000	2.5	84,839,000	1.9

Note.—Of the total yearly number of Letters, Post-cards, Halfpenny Packets, and Newspapers, the percentage of each is as follows:—

Letters	-	-	59.0	Halfpenny Packets	-	-	19.4
Post-cards	-	-	17.5	Newspapers	-	-	4.1

APPENDIX A.—continued.

Letters Delivered.

STATEMENT showing the ESTIMATED NUMBER of LETTERS delivered in the UNITED KINGDOM in each of the last TEN YEARS.

Year.	England and Wales.					Scotland.	Increase per cent.	No. per Head of Population.	Ireland.	Increase per cent.	No. per Head of Population.	United Kingdom.	Increase per cent.	No. per Head of Population.
	Country Offices.	Increase per cent.	London District.	Increase per cent.	Total.	Increase per cent.								
1899-1900	1,276,800,000	2·7	632,600,000	2·4	1,908,900,000	2·6	60	196,800,000	46	3·4	31	2,246,800,000	2·7	55
1900-01	1,312,700,000	2·9	664,300,000	5·0	1,977,000,000	3·6	61	202,400,000	47	2·2	32	2,323,600,000	3·4	57
1901-02	1,392,700,000	6·1	692,100,000	4·2	2,084,800,000	5·5	64	218,100,000	49	7·8	33	2,451,500,000	5·5	59
1902-03	1,465,800,000	5·2	742,000,000	7·2	2,207,800,000	5·9	67	221,900,000	49	1·7	34	2,579,500,000	5·2	61
1903-04	1,487,700,000	1·5	730,600,000	dec. 1·5	2,218,300,000	·5	66	226,200,000	49	1·9	35	2,597,600,000	·7	61
1904-05	1,511,800,000	1·6	727,200,000	·5	2,239,000,000	·9	66	229,700,000	50	1·5	35	2,624,600,000	1·0	61
1905-06	1,559,900,000	3·2	733,400,000	inc. 3·6	2,313,300,000	3·3	68	238,100,000	51	dec. 1	36	2,707,200,000	3·1	62
1906-07	1,650,700,000	4·5	767,000,000	1·8	2,397,700,000	3·6	69	248,400,000	53	inc. 1·6	36	2,804,400,000	3·6	64
1907-08	1,672,300,000	2·6	771,200,000	·5	2,443,500,000	1·9	70	255,700,000	54	2·9	38	2,863,900,000	2·1	65
1908-09	1,698,500,000	1·6	784,100,000	1·7	2,483,600,000	1·6	70	256,900,000	55	·5	38	2,907,400,000	1·5	65

APPENDIX A.—continued.

Post-cards Delivered.

STATEMENT showing the ESTIMATED NUMBER of POST-CARDS delivered in the UNITED KINGDOM in each of the last TEN YEARS.

Year.	England and Wales.					No. per Head of Population.	Scotland.	In-crease per cent.	No. per Head of Population.	Ireland.	In-crease per cent.	No. per Head of Population.	United Kingdom.	In-crease per cent.	No. per Head of Population.
	Country Offices.	In-crease per cent.	London District.	In-crease per cent.	Total.	In-crease per cent.									
1899-1900	233,700,000	4.3	108,900,000	4.6	342,600,000	4.7	40,800,000	5.2	9.5	16,900,000	4.3	3.7	400,300,000	4.7	9.8
1900-01	244,600,000	4.7	114,800,000	5.4	359,400,000	4.9	41,600,000	2.0	9.6	18,000,000	6.5	4.0	419,000,000	4.7	10.2
1901-02	260,900,000	6.7	119,400,000	4.0	380,300,000	5.8	45,700,000	9.9	10.2	18,900,000	5.0	4.3	444,900,000	6.2	10.7
1902-03	288,200,000	9.7	129,700,000	8.6	415,900,000	9.4	53,500,000	17.1	11.8	19,500,000	3.2	4.4	468,900,000	9.9	11.6
1903-04	369,200,000	29.0	147,900,000	14.0	517,100,000	24.3	72,200,000	34.9	15.8	24,400,000	25.1	5.5	613,700,000	25.5*	14.5
1904-05	450,500,000	22.0	166,600,000	12.6	617,100,000	19.3	86,700,000	20.1	18.7	30,700,000	25.8	7.0	734,500,000	19.7*	17.1
1905-06	483,500,000	9.5	183,000,000	9.8	676,500,000	9.6	91,000,000	5.0	19.5	32,800,000	6.8	7.5	800,300,000	9.0	18.5
1906-07	517,100,000	4.8	188,100,000	2.8	705,200,000	4.2	91,500,000	.5	19.4	34,700,000	5.8	7.9	831,400,000	3.9	19.0
1907-08	537,600,000	4.0	191,600,000	1.9	729,200,000	3.4	92,200,000	.8	19.3	36,900,000	6.3	8.4	858,300,000	3.2	19.4
1908-09	536,700,000	dec. .2	195,600,000	2.1	732,300,000	.4	91,000,000	dec. 1.3	18.9	36,700,000	dec. .5	8.4	860,800,000	.2	19.3

* Abnormal increase due to pictur post-cards.

APPENDIX A.—*continued.*

Half-penny Packets Delivered.

STATEMENT showing the ESTIMATED NUMBER OF HALF-PENNY PACKETS* delivered in the UNITED KINGDOM in each of the last TEN YEARS.

Year.	England and Wales.					Scotland.	In-crease per cent.	No. per Head of Popula-tion.	Ireland.	In-crease per cent.	No. per Head of Popula-tion.	United Kingdom.	In-crease per cent.	No. per Head of Popula-tion.
	Country Offices.	In-crease per cent.	London District.	In-crease per cent.	Total.									
1899-1900	451,600,000	4	143,700,000	1.7	595,300,000	75,030,000	dec. 1	17.5	32,500,000	dec. 8.5	7.2	702,800,000	2	17.3
1900-01	466,600,000	3.3	152,700,000	6.3	619,300,000	77,800,000	inc. 3.7	18.0	33,300,000	inc. 8.6	7.8	732,400,000	4.2	17.9
1901-02	499,800,000	7.1	153,300,000	4	653,100,000	76,000,000	dec. 2.3	16.9	37,100,000	5.1	8.4	766,200,000	4.6	18.4
1902-03	526,900,000	5.4	157,900,000	3.0	684,800,000	86,900,000	inc. 14.3	19.2	38,100,000	2.7	8.6	809,800,000	5.7	19.3
1903-04	533,800,000	1.3	159,500,000	1.0	693,300,000	86,500,000	dec. 5	18.9	40,600,000	6.6	9.2	820,400,000	1.3	19.3
1904-05	547,500,000	2.6	163,200,000	2.3	710,700,000	91,000,000	inc. 5.2	19.7	42,000,000	3.4	9.5	843,700,000	2.8	19.7
1905-06	585,000,000	6.8	169,000,000	3.6	754,000,000	96,400,000	5.9	20.6	41,200,000	dec. 1.9	9.4	891,600,000	5.7	20.6
1906-07	611,900,000	4.6	178,200,000	5.4	790,100,000	101,500,000	5.3	21.5	41,600,000	inc. 1.0	9.5	933,200,000	4.7	21.3
1907-08	612,600,000	1	182,300,000	2.3	794,900,000	102,700,000	1.2	21.5	43,000,000	3.4	9.8	940,600,000	8	21.3
1908-09	618,400,000	9	186,800,000	2.5	805,200,000	102,600,000	dec. 1	21.3	45,400,000	5.6	10.4	953,200,000	1.3	21.3

* Including also Foreign Printed Papers, &c., over 2 oz. in weight, prepaid at the halfpenny rate.

APPENDIX A.—*continued.*

Newspaper Post.

STATEMENT showing the ESTIMATED NUMBER of NEWSPAPERS delivered in the UNITED KINGDOM in each of the last TEN YEARS.

Year.	England and Wales.						No. per Head of Population.	Increase per cent.	Scotland.	No. per Head of Population.	Increase per cent.	Ireland.	No. per Head of Population.	Increase per cent.	United Kingdom.	No. per Head of Population.	Increase per cent.
	Country Offices.	Increase per cent.	London District.	Increase per cent.	Total.	Increase per cent.											
1894-1900	94,200,000	7.9	30,800,000	.3	125,000,000	5.9	3.9	19,300,000	7.8	4.5	4.9	19,100,000	4.2	6.0	163,400,000	4.0	4.0
1900-01	95,400,000	1.3	32,400,000	5.2	127,800,000	2.2	4.0	19,300,000	—	4.5	8.4	20,700,000	4.6	2.7	167,800,000	4.1	4.1
1901-02	96,900,000	1.6	33,800,000	4.3	130,700,000	2.3	4.0	20,100,000	4.1	4.5	dec. 8.2	19,000,000	4.3	1.2	169,800,000	4.1	4.1
1902-03	100,000,000	3.2	35,000,000	3.6	135,000,000	3.3	4.1	20,900,000	4.0	4.6	inc. 2.6	19,500,000	4.4	3.3	175,400,000	4.2	4.2
1903-04	99,900,000	dec. .1	33,700,000	3.7	133,600,000	dec. 1.0	4.0	21,100,000	1.0	4.6	3.1	20,100,000	4.6	dec. .3	174,800,000	4.1	4.1
1904-05	106,500,000	inc. 3.6	33,700,000	—	137,200,000	inc. 2.7	4.1	21,800,000	3.3	4.7	1.5	20,400,000	4.6	inc. 2.6	179,400,000	4.2	4.2
1905-06	106,000,000	2.4	37,100,000	inc. 10.1	143,100,000	4.3	4.2	22,700,000	4.1	4.9	dec. 3.9	19,600,000	4.5	3.3	185,400,000	4.3	4.3
1906-07	110,200,000	4.0	35,700,000	dec. 3.8	145,900,000	2.0	4.2	23,800,000	2.6	4.9	inc. 1.5	19,900,000	4.5	2.0	189,100,000	4.3	4.3
1907-08	113,700,000	3.2	41,700,000	inc. 16.8	155,400,000	6.5	4.4	24,200,000	3.9	5.1	1.5	20,200,000	4.6	5.7	199,800,000	4.5	4.5
1908-09	115,900,000	1.9	41,300,000	dec. 1.0	157,200,000	1.2	4.4	24,400,000	.8	5.1	2.5	20,700,000	4.7	1.3	202,300,000	4.5	4.5

APPENDIX A.—continued.

Parcel Post.

STATEMENT showing the NUMBER OF PARCELS and the REVENUE derived from the PARCEL POST in each of the last TEN YEARS.

NUMBER OF PARCELS DELIVERED.*																	REVENUE.		
Year.	ENGLAND AND WALES.						SCOTLAND.		IRELAND.		UNITED KINGDOM.			Postage.			Average Postage per Parcel.		
	Country Offices.		London District.		Total.		Number.	In-crease per cent.	Number.	In-crease per cent.	Number.	In-crease per cent.	Gross Amount.	55 per cent. on Railway-borne Parcels paid to Railway Companies.	Post Office Share.				
	Number.	In-crease per cent.	Number.	In-crease per cent.	Number.	In-crease per cent.													
1899-1900	49,046,000	4·6	13,444,000	6·6	62,490,000	5·0	8,098,000	4·4	4,860,000	4·7	75,448,000	4·9	1,580,508	742,215	888,293	5·03			
1900-01	52,523,000	7·1	14,671,000	9·1	67,194,000	7·5	8,608,000	6·3	5,215,000	7·3	81,017,000	7·4	1,699,994	801,236	896,758	5·04			
1901-02	56,081,000	6·8	15,742,000	7·3	71,823,000	6·9	9,227,000	7·2	5,552,000	6·5	86,602,000	6·9	1,821,976	859,603	962,373	5·05			
1902-03	58,566,000	4·4	16,339,000	3·8	74,905,000	4·3	9,634,000	4·4	5,771,000	3·9	90,310,000	4·3	1,902,048	895,369	1,006,679	5·05			
1903-04	61,356,000	4·8	16,863,000	3·2	78,219,000	4·4	10,105,000	4·9	6,102,000	5·7	94,426,000	4·6	1,994,434	988,172	1,056,262	5·07			
1904-05	63,184,000	3·0	17,391,000	3·1	80,575,000	3·0	10,381,000	2·7	6,275,000	2·8	97,231,000	3·0	2,050,150	961,420	1,068,730	5·06			
1905-06	66,277,000	4·9	18,167,000	4·5	84,444,000	4·8	10,725,000	3·3	6,513,000	3·8	101,682,000	4·6	2,138,673	996,449	1,142,224	5·05			
1906-07	68,542,000	3·4	18,417,000	1·4	86,959,000	3·0	11,102,000	3·6	6,758,000	3·8	104,819,000	3·1	2,131,223	991,371	1,189,852	4·88			
1907-08	71,895,000	4·9	18,976,000	3·0	90,871,000	4·5	11,581,000	4·3	7,018,000	3·8	106,470,000	4·4	2,211,095	1,018,282	1,192,813	4·85			
1908-09	74,331,000	3·4	19,325,000	1·8	93,656,000	3·1	12,050,000	4·0	7,317,000	4·3	113,023,000	3·2	2,259,125	1,045,342	1,215,783	4·80			

* Including parcels despatched to places abroad.

APPENDIX A.—*continued.*

Registered Letters.

STATEMENT showing the NUMBER OF LETTERS REGISTERED by the Public in the UNITED KINGDOM in each of the last TEN YEARS.

Year.	ENGLAND AND WALES.						SCOTLAND.		IRELAND.		UNITED KINGDOM		
	Country Offices.			London District.			Total.		Number.	Increase per cent.	Number.	Increase per cent.	
	Number.	Increase per cent.		Number.	Increase per cent.		Number.	Increase per cent.					
1899-1900	-	8,359,899	6·9	5,555,544	7·4	13,915,443	7·1	1,438,530	5·1	902,879	2·6	16,256,852	6·7
1900-01	-	9,042,411	8·2	5,921,288	6·6	14,963,699	7·5	1,781,775	23·9	984,395	9·0	17,729,869	9·1
1901-02	-	9,553,006	5·6	6,190,983	4·6	15,743,989	5·2	2,027,342	13·8	1,028,982	4·5	18,800,313	6·0
1902-03	-	9,826,038	2·9	6,447,780	4·1	16,273,818	3·4	1,696,098	16·3	1,046,240	1·7	19,016,156	1·1
1903-04	-	9,745,095	dec.	6,502,334	·8	16,247,429	dec.	1,718,235	inc.	1,063,450	1·6	19,029,114	·1
1904-05	-	9,292,569	4·6	6,472,637	·5	15,765,206	3·0	1,680,596	2·2	1,058,888	dec.	18,504,690	2·8
1905-06	-	9,203,963	1·0	6,702,901	3·6	15,906,864	inc.	1,678,602	·1	1,048,867	·9	18,634,333	inc.
1906-07	-	9,122,083	·9	6,678,902	·4	15,800,985	dec.	1,642,235	2·2	1,048,550	·03	18,491,770	dec.
1907-08	-	9,486,472	inc.	6,807,753	inc.	16,294,225	inc.	1,697,471	inc.	1,131,354	inc.	19,123,050	inc.
1908-09	-	9,425,628	4·0	6,939,643	1·9	16,365,271	3·1	1,726,259	3·4	1,130,945	7·9	19,222,475	3·4
			dec.	·6			·4		1·7		·04		·5

APPENDIX A.—continued.

Registered Parcels.

STATEMENT showing the NUMBER of PARCELS REGISTERED by the PUBLIC in the UNITED KINGDOM in each of the last TEN YEARS.

Year.	ENGLAND AND WALES.						SCOTLAND.		IRELAND.		UNITED KINGDOM.	
	Country Offices.			London District.			Total.					
	Number.	Increase per cent.		Number.	Increase per cent.							
1899-1900 -	523,077	13.8		218,051	2.4		741,128	10.2	53,547	9.1	43,433	838,113
1900-01 -	574,728	.9		238,475	9.4		813,203	9.7	77,913	45.5	48,909	940,025
1901-02 -	644,634	12.2		265,302	11.2		909,936	11.9	112,472	41.4	57,133	1,079,541
1902-03 -	643,742	dec.		284,414	7.2		928,156	2.0	73,972	dec.	63,244	1,065,372
1903-04 -	610,922	5.1		296,308	4.2		907,230	dec.	71,779	3.0	64,918	1,043,927
1904-05 -	616,241	inc.		291,215	dec.		907,456	inc.	70,422	1.9	63,643	1,041,521
1905-06 -	613,289	dec.		300,481	inc.		913,770	.7	69,586	1.2	64,319	1,047,675
1906-07 -	567,803	7.4		306,975	3.2		874,778	dec.	69,717	inc.	65,323	1,009,848
1907-08 -	579,402	inc.		317,843	2.2		897,245	4.3	72,481	.2	64,533	1,034,262
1908-09 -	591,530	2.0		322,388	3.5		913,918	inc.	71,340	3.9	65,248	1,053,506
		2.1			1.4			1.9		2.6		

APPENDIX A.—*continued.*

Registered Letters and Parcels—Analysis of Fees Paid.

STATEMENT showing the NUMBERS REGISTERED by the PUBLIC in the UNITED KINGDOM in each of the last TEN YEARS
(a) at the ordinary fee of 2d., (b) at higher fees.

Year.	Letters.			Parcels.		
	Registered at		Total.	Registered at		Total.
	2d.	Fees above 2d.		2d.	Fees above 2d.	
1899-1900	16,127,030	129,822	16,256,852	805,708	32,405	838,113
1900-01	17,591,110	138,759	17,729,869	904,862	35,163	940,025
1901-02	18,659,927	140,386	18,800,313	1,042,739	36,802	1,079,541
1902-03	18,882,275	133,881	19,016,156	1,026,534	38,838	1,065,372
1903-04	18,905,336	123,776	19,029,114	1,003,822	40,105	1,043,927
1904-05	18,386,920	117,770	18,504,690	1,003,960	37,561	1,041,521
1905-06	18,517,667	116,666	18,634,333	1,008,287	39,388	1,047,675
1906-07	18,374,117	117,653	18,491,770	964,740	45,108	1,009,848
1907-08	19,003,669	119,381	19,123,050	987,298	46,964	1,034,262
1908-09	19,104,774	117,701	19,222,475	1,006,757	46,749	1,053,506

APPENDIX A.—*continued.***Express Delivery Service.**

STATEMENT showing the NUMBER of EXPRESS DELIVERY SERVICES performed in the UNITED KINGDOM in each of the last
TEN YEARS.

YEAR.	ENGLAND AND WALES.						SCOTLAND.		IRELAND.		UNITED KINGDOM	
	Country Offices.		London District.		Total.		Number.	Increase per cent.	Number.	Increase per cent.	Number.	Increase per cent.
	Number.	Increase per cent.	Number.	Increase per cent.	Number.	Increase per cent.						
1899-1900	- 199,839	9·9	474,351	14·0	674,190	12·7	37,344	8·5	8,847	·9	720,381	12·3
1900-01	- 223,908	12·0	530,661	11·9	754,569	11·9	40,909	9·5	8,969	1·4	804,447	11·7
1901-02	- 258,918	15·6	627,826	13·3	886,744	17·5	45,237	10·6	9,925	10·7	941,906	17·1
1902-03	- 299,347	15·6	745,252	18·7	1,044,599	17·8	50,328	11·3	12,179	22·7	1,107,106	17·5
1903-04	- 364,782	21·9	855,012	14·7	1,219,794	16·8	57,172	13·6	13,867	13·9	1,290,833	16·6
1904-05	- 409,360	12·2	916,744	7·2	1,326,104	8·7	61,825	8·1	15,124	9·1	1,403,053	8·7
1905-06	- 480,251	17·3	1,010,815	10·3	1,491,066	12·4	71,381	15·5	16,299	7·8	1,578,746	12·5
1906-07	- 530,288	10·4	1,048,440	3·7	1,578,728	5·9	76,769	7·5	17,761	9·0	1,673,258	6·0
1907-08	- 612,283	15·5	1,092,873	4·2	1,705,156	8·0	83,624	8·9	20,108	13·2	1,808,888	8·1
1908-09	- 671,336	9·6	1,139,697	4·3	1,811,033	6·2	88,774	6·2	19,880	dec. 1·1	1,919,687	6·1

APPENDIX B.

Foreign and

ESTIMATE of the WEIGHT of LETTERS and POST-CARDS, and
FOREIGN COUNTRIES and BRITISH

COUNTRY OR COLONY.	Despatched from the United Kingdom.		Destined for the United Kingdom.	
	Letters and Post-cards.	Circulars, Book Packets, Patterns, News- papers.	Letters and Post-cards.	Circulars, Book Packets, Patterns, News- papers.
EUROPE.	Lb.	Lb.	Lb.	Lb.
Austria-Hungary - - - -	70,000	554,000	72,000	163,000
Belgium and Luxemburg - -	117,000	387,000	95,000	177,000
Denmark, Norway, and Sweden - -	100,000	373,000	74,000	158,000
France - - - - -	419,000	1,474,000	383,000	1,393,000
Germany - - - - -	410,000	1,850,000	448,000	1,152,000
Gibraltar, Malta, and Cyprus - -	51,000	395,000	75,000	34,000
Holland - - - - -	169,000	378,000	118,000	227,000
Italy - - - - -	89,000	734,000	81,000	181,000
Russia - - - - -	62,000	330,000	42,000	90,000
Spain and Portugal - - - -	62,000	784,000	53,000	96,000
Switzerland- - - - -	72,000	458,000	68,000	146,000
Turkey, Greece, Roumania, and Balkan States	28,000	314,000	24,000	62,000
Totals - - - -	1,649,000	8,031,000	1,533,000	3,879,000
ASIA.				
Asiatic Turkey and Persia - -	18,000	156,000	10,000	23,000
India (including Aden) - - -	311,000	3,246,000	206,000	529,000
Ceylon, Straits Settlements, Dutch East Indies, &c.	68,000	789,000	53,000	95,000
China, Japan, &c. - - - -	77,000	830,000	56,000	92,000
Totals - - - -	474,000	5,021,000	325,000	739,000

APPENDIX B.

Colonial Letters, &c.

of OTHER ARTICLES, exchanged by the UNITED KINGDOM, with
COLONIES, during the Year 1908.

COUNTRY OR COLONY.	Despatched from the United Kingdom.		Destined for the United Kingdom.	
	Letters and Post-cards.	Circulars, Book Packets, Patterns, News- papers.	Letters and Post-cards.	Circulars, Book Packets, Patterns, News- papers.
AFRICA.	Lb.	Lb.	Lb.	Lb.
South African Colonies - - -	284,000	2,210,000	182,000	401,000
East Coast of Africa, Mauritius, &c. -	22,000	231,000	13,000	20,000
West Coast of Africa, Madeira, &c. -	49,000	451,000	31,000	16,000
Egypt, Morocco, &c. - - -	61,000	552,000	54,000	74,000
Totals - - -	416,000	3,444,000	280,000	511,000
AMERICA.				
United States - - - - -	507,000	3,180,000	537,000	2,690,000
Canada and Newfoundland - -	390,000	4,008,000	319,000	935,000
West Indies (British and Foreign), &c.	51,000	441,000	28,000	48,000
Mexico and Central American States -	17,000	187,000	12,000	22,000
Brazil, Argentine Republic, Uruguay,) and Paraguay - - - - -	58,000	762,000	44,000	100,000
Chili, Peru, and Bolivia - - -	22,000	270,000	20,000	27,000
Ecuador, Colombia, Venezuela, &c. -	9,000	101,000	4,000	3,000
Totals - - -	1,044,000	8,949,000	964,000	3,825,000
AUSTRALASIA.				
Commonwealth of Australia - -	196,000	1,798,000	109,000	654,000
New Zealand, Fiji, &c. - - -	90,000	899,000	55,000	455,000
Totals - - -	286,000	2,697,000	164,000	1,109,000
H.M. SHIPS STATIONED ABROAD -	57,000	353,000	17,000	9,000
GRAND TOTALS - -	3,926,000	28,495,000	3,283,000	10,072,000

APPENDIX B.—continued.

Foreign and Colonial Parcels.

STATEMENT of the NUMBER of FOREIGN and COLONIAL PARCELS DESPATCHED and RECEIVED in each of the last TEN YEARS.

YEAR.	FOREIGN COUNTRIES.											
	BELGIUM.		FRANCE.		GERMANY.		HOLLAND.		ITALY.		SWITZERLAND.	
	Despatched to.	Received from.	Despatched to.	Received from.	Despatched to.	Received from.	Despatched to.	Received from.	Despatched to.	Received from.	Despatched to.	Received from.
1899-1900	52,911	25,764	208,153	199,601	266,932	384,169	47,204	42,262	65,198	61,880	51,712	21,961
1900-1	54,088	28,178	222,477	212,032	281,145	392,426	48,804	40,952	73,179	66,410	52,248	22,292
1901-2	55,542	31,334	225,586	232,067	304,971	447,601	51,470	43,837	80,028	74,523	56,362	22,407
1902-3	56,655	33,272	237,215	234,356	330,587	467,819	53,018	46,150	88,855	74,716	58,278	22,793
1903-4	59,769	36,692	231,872	242,351	337,889	470,026	57,668	50,348	103,367	75,347	65,098	25,404
1904-5	60,608	37,101	261,307	247,044	332,603	459,471	62,669	51,618	121,823	74,064	70,052	20,064
1905-6	63,745	38,351	275,074	254,490	356,423	474,669	68,958	56,365	133,361	76,384	74,627	6,444
1906-7	66,817	39,244	285,889	252,234	377,623	477,082	72,898	60,291	141,273	74,067	74,626	4,950
1907-8	70,993	41,481	288,354	256,641	410,013	477,645	78,869	62,048	155,121	68,231	76,904	4,554
1908-9	74,894	40,867	291,673	260,174	435,337	484,576	84,323	63,597	162,012	71,833	82,306	3,963

APPENDIX B.—*continued.*

Foreign and Colonial Parcels—*continued.*

STATEMENT OF the NUMBER OF FOREIGN and COLONIAL PARCELS DESPATCHED and RECEIVED in each of the last
TEN YEARS—*continued.*

YEAR.	BRITISH COLONIES AND POSSESSIONS—continued.										GRAND TOTAL. (FOREIGN AND COLONIAL.)			
	WEST INDIES.		OTHER COLONIES AND POSTAL AGENCIES.				TOTAL.							
	Despatched to.	Received from.	Despatched to.	Received from.	Despatched.	Increase per cent.	Received.	Increase per cent.	Despatched.	Increase per cent.	Received.	Increase per cent.		
1899-1900	33,988	9,233	66,547	23,107	688,507	36.24	229,448	8.23	1,508,795	15.65	1,001,820	6.67		
1900-1	37,531	9,704	75,650	27,645	1,132,118	64.43	314,437	37.04	2,005,506	32.92	1,118,788	11.68		
1901-2	40,896	10,235	90,525	33,444	1,283,040	13.33	313,718	dec. 23	2,202,845	9.84	1,211,391	8.28		
1902-3	44,336	11,342	94,899	35,250	1,097,239	dec. 14.48	314,360	inc. 20	2,109,755	dec. 4.23	1,244,850	2.76		
1903-4	51,542	11,819	102,748	34,220	1,108,458	inc. 1.02	338,529	7.69	2,213,819	inc. 4.93	1,295,484	4.07		
1904-5	51,730	11,531	110,554	36,383	1,149,723	3.72	368,981	9.00	2,315,204	4.58	1,315,788	1.57		
1905-6	48,433	10,674	115,217	37,725	1,204,493	4.76	392,838	6.47	2,474,003	6.86	1,431,035	8.76		
1906-7	48,094	9,706	108,161	32,685	1,223,894	1.61	407,798	3.81	2,575,891	4.12	1,471,785	2.85		
1907-8	54,095	9,760	107,100	30,333	1,288,049	5.24	442,510	8.51	2,736,561	6.24	1,515,800	2.99		
1908-9	53,828	9,792	113,931	29,326	1,283,902	dec. .32	427,370	dec. 3.42	2,808,051	2.61	1,534,042	1.20		

APPENDIX C.

Home Packet Service.

Line of Communication.	Frequency.	Contractors.	Terminable.	Payment.	Remarks.
ENGLAND AND WALES.					
ALDERNEY and GUERNSEY Service.	—	Alderney Steam Packet Company, Ltd.	—	600/.	Two services weekly between Alderney and Guernsey, and one between Alderney and Cherbourg, with an additional weekly service between Alderney and Guernsey during summer months.
FISHGUARD and ROSSLARE.	Daily.	Great Western Railway Company.	—	600/.	This amount includes payment for certain railway services.
FLEETWOOD and BELFAST.	Week days.	North Lancashire Steam Navigation Company (but payment made through Lancashire and Yorkshire Railway Company).	On 6 months' notice.	1,000/.	The Department has the general use of the Company's vessels.
HOLYHEAD and KINGSTOWN.	Twice a day.	City of Dublin Steam Packet Company.	31 Mar. 1917 or on 12 months' notice after 31 Mar. 1916.	100,000/.* to 31 Mar. 1917; 80,000/., after that date.	Time on outward journeys (including transfer on both sides of the Channel), 3 hrs. 37 mins. night service, and 3 hrs. 22 mins. day service. Time on inward journeys (including transfer), 3 hrs. 32 mins. night service, and 3 hrs. 17 mins. day service.
HOLYHEAD and NORTH WALL.	Saturdays.	London and North-Western Railway Company.	—	4,660/.	This service is in connection with the acceleration of outward American Mails, and the sum of 1,553/., is contributed by the Cunard Steamship Company towards the cost of the Packet Service.
Ditto - -	Week Days.	Ditto	—	700/.	This service is in connection with the Supplementary Irish Night Mails conveyed by the 10.15 p.m. train from Euston.
LIVERPOOL and DOUGLAS (ISLE of MAN).	Once on week days (twice on week days during the summer season).	Isle of Man Steam Packet Company	On 1st Oct. of any year by 6 months' notice on either side.	4,500/.	Speed of 14 nautical miles an hour in summer; 12 in winter.
Ditto - -	—	Ditto	—	3s. per cwt. Est., 1,100/., p.a. 860/.	Conveyance of Parcel Mails.
PENZANCE and SCILLY.	Three times a week in summer. Twice a week in winter.	West Cornwall Steamship Company.	On 6 months' notice.	—	—
PORTSMOUTH and RYDE.	Once daily, with the Night Mails.	London, Brighton, and South Coast, and London and South - Western Railway Companies.	30th June, 1911	2,500/.	The Department has the general use of the Companies' vessels, which are constantly plying between the two places.
SCILLY, ST. MARTIN and ST. AGNES.	—	West Cornwall Steamship Company, Ltd.	—	120/.	—

* Subject to a reduction of 2,000/., in respect of the receipts from passenger traffic.

APPENDIX C.—*continued.*Home Packet Service—*continued.*

Line of Communication.	Frequency.	Contractors.	Terminable.	Payment.	Remarks.
ENGLAND AND WALES—cont.					
SOUTHAMPTON and CHANNEL ISLANDS.	Once on week days.	London and South-Western Railway Company.	On 6 months' notice.	6,500 <i>l.</i>	No contract.
SOUTHAMPTON and COWES.	Once on week days.	Southampton, Isle of Wight, and South of England Royal Mail Steam Packet Company.	—	150 <i>l.</i>	No contract. The Department has the general use of the Company's vessels.
WEYMOUTH and CHANNEL ISLANDS.	Six days a week.	Great Western Railway Company.	—	200 <i>l.</i>	No contract. The Department has the general use of the Company's vessels.
SCOTLAND.					
ABERDEEN and LERWICK.	Five days a week in summer. Four days a week in winter.	North of Scotland and Orkney and Shetland Steam Navigation Company.	30th April 1912 or on 6 months' notice thereafter.	6,500 <i>l.</i>	—
LERWICK, WHALSAY, and NORTH ISLES.	Thrice a week.	Ditto.		—	—
ARDROSSAN and ABBAN, and GREENOCK and RUTHESAY.	Week days.	Glasgow and South-Western Railway Company.	30 June 1917	500 <i>l.</i>	The Department has the general use of all the Company's steamers.
GREENOCK and CAMPBELTOWN.	—	Campbeltown and Glasgow Steam Packet Joint Stock Company, Ltd., per Ross Wallace.	—	+1,850 <i>l.</i>	—
GREENOCK, ARDROSSAN, and BELFAST.	Week days.	G. and J. Burns, Ltd.	On 12 months' notice.	*7,000 <i>l.</i>	—
GREENOCK, COLONSAY, and TARBERT (HARRIS).	Once a week.	Martin Orme and John McCallum & Co.	—	500 <i>l.</i>	No contract.
GREENOCK and DUNVEGAN.				—	—
GREENOCK and KILMUN.	Twice on week days.	Capt. Jas. Williamson, for Caledonian Steam Packet Company, Ltd.	—	125 <i>l.</i>	No contract.
GREENOCK and LOCHGOILHEAD.	Week days.	Lochgoil Steam Packet Company, per M.T. Clark.	On 6 months' notice.	350 <i>l.</i>	The Department has the general use of all this Company's steamers.
GREENOCK and RUTHESAY.	Week days.	David MacBrayne, Ltd.	On 6 months' notice.	2,510 <i>l.</i>	This payment includes 320 <i>l.</i> for the general use of all the Company's steamers running to and from the Clyde.
GREENOCK and ARDRISHAIG.				—	
GREENOCK, ISLAY, and JURA.	Week days.	David MacBrayne, Ltd.	On 6 months' notice.	900 <i>l.</i>	—
TARBERT, ISLAY, and JURA.				—	
INVERGORDON and CROMARTY.	Week days.	Cromarty Steamship Company, Ltd.	On 3 months' notice.	120 <i>l.</i>	No contract.
INVERNESS and FORT AUGUSTUS.	Six days a week.	David MacBrayne, Ltd.	On 6 months' notice.	210 <i>l.</i> and 25 <i>l.</i> for Parcel Service.	—
KIRK WALL and BALFOUR.	Five days a week.	John Reid - -	On 3 months' notice.	59 <i>l.</i>	Speed of not less than 8 nautical miles an hour.

+ From 1 June, 1908.

* From 1 Jan., 1909.

APPENDIX C.—*continued.*Home Packet Service—*continued.*

Line of Communication.	Frequency.	Contractors.	Terminable.	Payment.	Remarks.
<i>SCOTLAND—cont.</i>					
KIRKWAII and NORTH ISLES of ORKNEY.	Twice a week for 9 months, and three times a week for 3 months.	Orkney Steam Navigation Company, per Donald Bertram.	On 6 months' notice.	500 <i>l.</i>	—
KNOYDART and MAL- LAIG.	Three days a week.	Arthur Salvin Bowlby, payable to Alexander McLennan.	On 6 months' notice.	52 <i>l.</i> 2 <i>s.</i> 10 <i>d.</i>	By sailing vessel.
KYLE and PORTREE	Six days a week.	David MacBrayne, Ltd.	On 12 months' notice.	650 <i>l.</i>	Speed of not less than 10 nautical miles an hour.
KYLE and STORNOWAY	Once a day, six days a week each way.	David MacBrayne, Ltd.	On 6 months' notice.	3,000 <i>l.</i>	Speed of 11 nautical miles an hour.
OBAN and FORT WILLIAM.	Once a day, six days a week.	Ditto	—	500 <i>l.</i>	Time on outward or homeward journey 3½ hours.
OBAN and TOBERMORY	Once a day, six days a week.	Ditto	On 6 months' notice.	555 <i>l.</i>	Speed of 10 nautical miles an hour.
OBAN and West of MULL, calling at Croggan, Tobermory, Kilchoan, Coll, Tiree, Iona (on outward voyage) and Bunessan.	<i>O u t.</i> —On Mondays, Wednesdays, and Fridays. <i>I n.</i> —On Tuesdays, Thursdays, and Saturdays.	Ditto	On 6 months' notice.	1,200 <i>l.</i>	—
OBAN and DUNVEGAN, calling at Tobermory, Castlebay, Lochboisdale, and Lochmaddy.	Mondays, Wednesdays, and Fridays.	Ditto	On 6 months' notice.	3,000 <i>l.</i>	Speed of not less than 11 nautical miles an hour.
DUNVEGAN and OBAN, calling at Loch Pooltiel, and Loch Bracadale and Tobermory; And also at Canna and Rùm.	Tuesdays, Thursdays, and Saturdays. Tue days and Thursdays.				
OBAN and LOCHMADDY, calling at Tobermory, Loch Bracadale, Loch Pooltiel, and Dunvegan; And also at Rùm and Canna.	Tuesdays, Thursdays, and Saturdays. Tue-days and Saturdays.				
LOCHMADDY and OBAN, calling at Lochboisdale and Castlebay.	Mondays, Wednesdays, and Fridays.				

APPENDIX C.—continued.

Home Packet Service—continued.

Line of Communication.	Frequency.	Contractors.	Terminable.	Payment.	Remarks.
<i>SCOTLAND—cont.</i>					
PORTREE, HARRIS, LOCHMADDY, and DUNVEGAN.	Out.—Tuesdays, Thursdays, and Saturdays. In.—Mondays, Wednesdays, and Fridays.	David MacBrayne, Ltd.	On 6 months' notice.	1,550 <i>l</i> .	Speed of not less than 10 nautical miles an hour.
LOCH SHIEL - - -	—	Lord Howard of Glossop; per W. Middleton.	—	+ 198 <i>l</i> .	—
ROTHESAY and WEMYSS BAY.	Week days.	Caledonian Steam Packet Company, Ltd., per Capt. James Williamson.	On 6 months' notice.	150 <i>l</i> .	—
SCRABSTER PIER (THURSO) and STROMNESS.	6 days a week.	North of Scotland and Orkney and Shetland Steam Navigation Company.	On 6 months' notice.	2,000 <i>l</i> .	Vessels to be capable of steaming 12 knots an hour.
SHETLAND (SUMBURGH) and FAIR ISLE.	Once a fortnight.	Gruttrass Station Company, W. L. McDougall, Manager.	—	60 <i>l</i> ., 1 Apr. to 31 Oct.; 48 <i>l</i> . a trip other months. 78 <i>l</i> . (2 <i>l</i> . a trip.)	By sailing vessel.
SHETLAND (WALLS) and FOULA.	Once a fortnight (Oct. to Mar.). Once a week (Apr. to Sept.).	M. Mansen and L. Gray.	On 6 months' notice.	—	By sailing vessel.
STRANRAER and LARNE. (See below.) STROMNESS and SOUTH ISLES.	4 days a week.	R. Garden - -	On 6 months' notice.	*200 <i>l</i> . 17 <i>s</i> . 4 <i>d</i> .	—
WEMYSS BAY and MILLPORT.	Thrice on week days in summer and twice in winter.	Caledonian Railway Company.	—	—	The service is provided under a general agreement with the Railway Company.
Ditto - - -	Additional week day service in winter.	Caledonian Steam Packet Company, Ltd., per Capt. James Williamson.	On 6 months' notice.	200 <i>l</i> .	—
WEMYSS BAY and ROTHESAY.	April to Sept. Week days.	Ditto	—	300 <i>l</i> .	—
<i>IRELAND.</i>					
LARNE and STRANRAER.	Week days.	Portpatrick and Wigtownshire Joint Committee.	On 12 months' notice.	13,500 <i>l</i> .	This amount includes also payment for Railway Services between Carlisle and Stranraer, Larne and Belfast, and Larne and Derry.
GALWAY and ABBEY ISLANDS.	3 days a week.	Galway Bay Steamboat Company.	—	85 <i>l</i> .	No contract.

* From 1st October, 1908.

φ From 1st January, 1909.

+ From 25 Jan., 1909.

NOTES—

1. In addition to the payments given in detail above, Letters, &c., are conveyed by Private Ships to and from places in the United Kingdom for a payment of 2*s*. 1*d*. per 100. The total amount paid at present is about 800*l*. a year.

2. There is also a number of small miscellaneous fixed payments for conveyance of Home Mails and for ferriage (including various payments for the conveyance of Mails in the Highlands and Islands of Scotland), not exceeding in any case 120*l*. a year.

3. For the conveyance of Homeward American Mails by steamer from Dublin to Holyhead when required, the London and North-Western Railway Company receives 60*l*. a trip.

APPENDIX D.

Foreign and Colonial Packet Service.

Service.	Contracts.			(a) Pay- ment during the Year 1908-1909.	Amount received.		Cost borne in respect of Mails despatched from the United Kingdom.
	Com- mencement.	Termination.	Deductions for Overtime.		By Contributions.	(b) By Sea Post- age for Mails despatched by Colonies and Foreign Countries.	
EUROPE :			5 <i>l.</i> for 20 minutes and 1 <i>l.</i> for every additional 15 minutes.	£ 25,000	—	£ —	£ 25,000 (d)
Dover and Calais - - - -	21 June 1893 -	(c) 21 Oct. 1908 -	-	850	—	—	850
Harwich to the Hook of Holland	1 Jan. 1904 -	On 6 months' notice	-	56 (f)	—	—	56
(e) Newhaven to Dieppe - -	1 July 1897 -	Do.	-	39 (f)	—	25	14
(e) Channel Islands and St. Malo and Granville - - - -	15 Feb. 1888 -	Do.	-	1,652 (f)	—	787	865
(e) Grimsby and Hamburg	16 Apr. 1893 -	Do.	-	1,016 (f)	—	211	805
(e) London and Hamburg - -	1 Jan. 1886 -	Do.	-	86 (f)	—	50	6
(e) Liverpool, Malta, and the Levant	1 Jan. 1886 -	Do.	-	158 (f)	—	24	134
(e) United Kingdom and Lisbon	1 Jan. 1888 -	Do.	-				
AMERICA :							
United Kingdom to United States :—							
Cunard Service - - - -	7 Aug. 1902 -	15 Nov. 1927	-	68,000	—	13,259	135,846
White Star Service - - - -	1 Aug. 1899 -	On 12 months' notice	-	76,924 (g)	—	—	—
American Service - - - -	—	—	-	4,181 (g)	—	—	—
New York and Bermuda - -	1 Jan. 1889 -	On 6 months' notice	-	806 (f)	—	54	752
Newfoundland - - - -	Colonial Contract - -	- - - -	-	2,000 (h)	—	—	2,000
(e) Liverpool, Belize, and Mexico -	1 Dec. 1891 -	On 6 months' notice	-	849 (f)	—	—	846
(e) United Kingdom, West Indies, and Belize	25 Aug. 1905 -	—	-	16,984 (f)	—	7,555	9,429
United Kingdom, West Indies, and New York - - - -	1 June 1907 -	On 6 months' notice	-	—	—	—	—
(e) United Kingdom and Costa Rica	10 Oct. 1905 -	—	-	165 (f)	—	8	157

Southampton to Brazil and River Plate	1 Sept. 1876 -	On 6 months' notice	-	11,457 (£)	-	3,943	8,377
(c) Do. to and from do.	1 Sept. 1889 -	Do.	-	763 (£)	-	-	-
Liverpool and Falkland Islands, Liverpool to Caliseo, Panama to Valparaiso	14 June 1900 -	13 June 1910 -	-	32,000	Falkland Islands, 2,500	21,970	7,530
AFRICA :							
United Kingdom and West Coast of Africa	1 Jan. 1899 -	On 3 months' notice	-	15,355	{ Gold Coast - 1,560 Sierra Leone - 1,150 Southern Nigeria 1,520 } £	-	-
(c) Do. do.	1 Jan. 1888 -	On 6 months' notice	-	4,098 (£)	{ Gambia - 200 Northern Nigeria 170 }	1,633	13,220
United Kingdom and St. Helena and Ascension	1 Oct. 1893 -	On 6 months' notice	-	5,070	Admiralty, 780 -	150	4,140
Aden and Zanzibar	5 Nov. 1892 -	On 12 months' notice	-	9,000	-	450	8,550
(c) United Kingdom and Chinde, &c.	{ 15 Aug. 1900 3 Oct. 1907 }	On 3 months' notice	-	288 (£)	-	32	256
(c) United Kingdom and Morocco	{ 1 Oct. 1900 18 June 1908 }	17 June 1908	-	62 (£)	-	7	55
United Kingdom to Canaries, &c.	1 Jan. 1904 -	-	-	500	-	-	500
ASIA AND AUSTRALASIA :							
Brindisi and Bombay, Shanghai and Adelaide	1 Feb. 1908 -	31 January 1915	{ 100l. for every 12 hours on Eastern route, and for every 24 hours on Australian route }	305,000	{ India - 54,388 Ceylon - 4,852 } £	47,982	179,850
(c) United Kingdom to New Zealand	1 Oct. 1905 -	-	-	4,236 (£)	{ Straits Settlements - 6,475 Hong Kong - 11,273 }	-	4,236
United Kingdom, Canada, Japan, and Hong Kong	{ 7 April 1906 7 April 1908 }	{ 6 April 1908 6 April 1911 }	100l. for every 12 hours.	48,736	Canada, 23,275 -	2,830	23,631

(a) In addition to the payments given in detail above, Letters, &c., are conveyed abroad by Private Ships at rates of $\frac{1}{2}$ d. per article for a distance not exceeding 300 miles and $\frac{1}{4}$ d. per article over that distance. The total amount so paid at present is about 3,000l. a year.

(b) These receipts were mainly in respect of mails conveyed during the year 1907. (c) Service continued from this date at the old rate of payment pending arrangement of new contract.

(d) A second service in each direction is provided at the cost of the French Post Office.

(e) These contracts are for Parcel Mails only.

(f) The payments in these cases depend upon the weight of mails conveyed by the Packets.

(g) Including payment for Sea-Sorting accommodation.

(A) This sum represents the Imperial share of the cost of the Service.

APPENDIX E.*

Inland Revenue Licenses.

NUMBER and DESCRIPTION of LICENSES issued by the POST OFFICE in each of the last TEN YEARS.

YEAR.	Brewers.	Dogs.	Male Servants.	Carriages.	Armorial Bearings.	Guns.	Game.	Game-keepers.	Game Dealers.	Motors.	Total Number.	Revenue. £
1899-1900 -	11,938	1,306,557	119,836	321,325	36,153	199,947	49,684	4,174	—	—	2,049,614	1,161,056
1900-01 -	11,611	1,313,913	122,494	328,895	36,349	215,591	50,770	4,226	—	—	2,113,849	1,194,586
1901-02 -	11,152	1,404,253	123,976	334,601	36,316	228,278	53,888	4,358	—	—	2,196,822	1,239,081
1902-03 -	10,990	1,462,049	127,425	340,378	37,272	230,006	53,197	4,442	—	128	2,265,887	1,272,052
1903-04 -	10,623	1,492,025	128,734	348,266	37,060	225,386	49,543	4,302	—	373	2,296,312	1,281,867
1904-05 -	9,261	1,526,212	129,956	361,998	36,991	223,861	53,147	4,373	—	730	2,346,529	1,320,341
1905-06 -	8,707	1,557,227	129,339	362,026	36,296	225,596	55,233	4,515	—	1,735	2,380,674	1,343,199
1906-07 -	8,363	1,621,965	131,043	370,715	35,791	228,078	54,702	4,521	—	3,320	2,458,498	1,384,145
1907-08 -	7,958	1,654,163	134,275	364,023	35,519	229,279	49,539	4,487	—	5,228	2,484,471	1,388,014
1908-09 -	8,142	1,733,795	200,944	442,600	48,453	222,924	52,048	4,453	24	63,348	2,776,731	1,647,739

* The information as to Licences has, in previous years, appeared as Appendix F.

APPENDIX F. Staff of Officers.

Totals 31 Mar. 1908.	Description of Officers.	England and Wales.		Ireland.		Scotland.		Totals.		Totals 31 Mar. 1909.
		Males.	Fe- males.	Males.	Fe- males.	Males.	Fe- males.	Males.	Fe- males.	
	A.									
2	Postmaster General and Minister assisting Postmaster General.	2	—	—	—	—	—	2	—	2
	B.									
11	Secretary, Second Secretary, Assistant Secretaries, Comptroller and Accountant General, and Secretaries for Ireland and Scotland.	9	—	1	—	1	—	11	—	11
	C.									
44	Clerks, Class I., Secretary's Office.	44	—	—	—	—	—	44	—	44
	D.									
182	Heads of Departments, Staff Officers, and other Superior Officers:									
	Metropolitan - -	139	4	9	—	8	—	} 184	4	188
	Provinces - - -	19	—	5	—	4	—			
	E.									
285	Surveyors and Assistant Surveyors.	60	—	15	—	15	—	} 305	—	305
	Travelling Clerks, Inspecting Telegraphists, and Stationary Clerks.	155	—	30	—	30	—			
	F.									
835	Head Postmasters:									
	Metropolitan - -	8	—	—	—	—	—	} 769	54	823*
	Provinces - - -	563	25	83	20	115	9			
	G.									
22,437	Sub-Postmasters:									
	Metropolitan - -	747	178	55	97	63	54	} 14,785	7,853	22,638†
	Provinces - - -	11,150	3,388	1,523	1,233	1,247	903			
	H.									
10,878	Clerks and Superintending Officers:									
	Metropolitan - -	3,965	2,813	227	58	191	53	} 7,719	3,238	10,957
	Provinces - - -	2,817	259	162	8	357	47			
	I.									
33,831	Counter Clerks and Telegraphists, Sorters, Sorting Clerks and Telegraphists, Telegraphists, Telephonists, &c.:									
	Metropolitan - -	9,964	3,469	638	108	490	164	} 24,783	10,194	34,977
	Provinces - - -	11,241	4,923	874	392	1,576	1,138			
68,505	Carried forward - - -	40,883	17,059	3,622	1,916	4,097	2,368	48,602	21,343	69,945

* Unestablished, 25; Established, 798.

† Unestablished, 22,154; Established, 484.

APPENDIX F.—*continued.*Staff of Officers—*continued.*

Totals 31 Mar. 1908.	Description of Officers.	England and Wales.		Ireland.		Scotland.		Totals.		Totals 31 Mar. 1909.
		Males.	Fe- males.	Males.	Fe- males.	Males.	Fe- males.	Males.	Fe- males.	
68,505	Brought forward - -	40,883	17,059	3,622	1,916	4,097	2,368	48,602	21,343	69,945
	J.									
44,154	Mechanics, Porters, Postmen, &c.:									
	Metropolitan - -	11,502	—	498	—	780	—	45,986	16	46,002
	Provinces - - -	26,719	9	2,176	1	4,311	6			
	K.									
90,886	Persons employed in un- established positions, viz., Assistants to Postmasters, Auxiliaries, Boy Messengers, Boy Clerks, Commissionaires, Female Servants, Telegraph Construction Hands, &c.:									
	Metropolitan - -	14,092	2,600	793	285	527	216	68,481	23,464	91,945
	Provinces - - -	38,025	16,149	9,007	1,681	6,037	2,533			
203,545	L.	131,221	35,817	16,096	3,883	15,752	5,123	163,069	44,823	207,892
52	Postmasters, Clerks, Postmen, &c. abroad (under direction of Postmaster General) and agents in Foreign Countries for collection of postage, &c.	—	—	—	—	—	—	55	—	55
203,597	Totals - -	131,221	35,817	16,096	3,883	15,752	5,123	163,124	44,823	207,947

APPENDIX F.—*continued.*

Mortality Table.

	Number of Deaths during the Twelve Months ended 31st December, 1908.											
	Chief Office.		Metro- politan Districts.		Rest of England.		Scotland.		Ireland.		Total.	
	Men.	Women.	Men.	Women.	Men.	Women.	Men.	Women.	Men.	Women.	Men.	Women.
INFECTIVE DISEASES.												
Diphtheria - - -	—	—	—	—	1	—	1	—	—	—	2	—
Enteric fever - - -	—	—	—	—	2	—	2	—	2	—	6	—
Enteritis - - -	—	—	—	—	1	—	—	—	—	—	1	—
Erysipelas - - -	—	—	—	—	1	—	1	1	—	—	2	1
Influenza - - -	3	—	2	—	16	—	1	—	1	—	23	—
Malaria - - -	—	—	1	—	—	—	—	—	—	—	1	—
Pneumonia - - -	5	1	7	—	26	—	4	—	4	2	46	3
Pyæmia - - -	—	—	1	—	—	—	—	—	—	—	1	—
Rheumatism - - -	—	—	—	—	2	—	1	—	1	—	4	—
Septicæmia - - -	—	—	—	—	2	—	—	—	1	—	3	—
Tuberculosis - - -	6	1	16	—	23	1	2	1	7	1	54	4
GENERAL DISEASES.												
Anæmia pernicious - -	—	—	1	—	1	—	—	—	1	—	3	—
Diabetes - - -	—	—	—	—	3	—	1	—	—	—	4	—
Exophthalmic goitre - -	—	—	—	—	—	1	—	—	—	—	—	1
Leucocythæmia - - -	—	—	—	—	—	1	—	—	—	—	—	1
DISEASES OF THE—												
Adrenals - - -	—	—	—	—	1	—	—	—	—	—	1	—
Circulatory system - -	11	2	7	—	25	2	6	—	7	—	56	4
Digestive system - - -	4	1	4	—	12	4	10	—	1	—	31	5
Ear - - -	—	—	—	—	3	—	—	—	—	—	3	—
Generative system - -	—	—	1	—	2	—	—	—	—	—	3	—
Nervous system - - -	7	1	8	—	23	1	3	2	4	—	45	4
Respiratory system - -	1	—	3	—	10	—	3	—	2	—	19	—
Skin - - -	—	—	—	—	1	—	—	—	—	—	1	—
Urinary system - - -	4	—	4	—	4	1	2	—	1	1	15	2
NOT INCLUDED UNDER ABOVE HEADINGS.												
Accident - - -	2	—	4	—	7	—	6	—	3	—	22	—
Drowning - - -	—	—	—	—	4	—	—	—	—	—	4	—
Senile decay - - -	—	—	—	—	1	—	—	—	—	—	1	—
Suicide - - -	1	—	2	—	12	—	1	—	—	—	16	—
Tumours—												
Malignant - - -	4	—	2	—	12	2	2	1	1	—	21	3
Non-malignant - -	1	—	1	—	3	—	—	—	—	—	5	—
Not stated - - -	—	1	—	—	2	—	—	—	—	—	2	1
Total - - -	49	7	64	—	200	13	46	5	36	4	395	29

APPENDIX F.—*continued.*

Table giving Causes of Retirement from the Service through ill-health.

Number of Persons retired during the Twelve Months ended 31st December, 1908.												
	Chief Office.		Metro-politan Districts.		Rest of England.		Scotland.		Ireland.		Total.	
	Men.	Women.	Men.	Women.	Men.	Women.	Men.	Women.	Men.	Women.	Men.	Women.
INFECTIVE DISEASES.												
Erysipelas - - -	—	—	—	—	—	—	—	—	1	—	1	—
Influenza - - -	—	—	—	—	2	1	—	—	—	—	2	1
Periostitis - - -	—	—	—	—	1	—	—	—	—	—	1	—
Rheumatism - - -	4	3	13	1	30	4	5	—	3	—	55	8
Syphilis - - -	—	—	—	—	1	—	—	—	—	—	1	—
Tuberculosis - - -	27	5	17	2	33	10	4	3	10	—	91	20
GENERAL DISEASES.												
Anæmia - - -	—	—	—	—	4	5	—	1	—	—	4	6
Diabetes - - -	—	—	—	—	2	—	1	—	—	—	3	—
Gout - - -	1	—	1	—	4	—	—	—	1	—	7	—
Leucocythæmia - - -	—	—	—	—	1	—	—	—	—	—	1	—
Nervous debility - - -	4	10	2	—	5	9	—	1	—	—	11	20
General debility - - -	—	20	2	1	7	3	1	—	1	—	11	24
Senile decay - - -	1	—	1	—	1	—	—	—	—	—	3	—
DISEASES OF THE—												
Adrenals - - -	—	—	—	—	1	—	—	—	—	—	1	—
Circulatory system - - -	17	3	17	—	34	3	2	1	3	2	73	9
Digestive system - - -	6	3	2	—	16	1	—	—	3	—	27	4
Ear - - -	1	1	—	1	4	—	—	—	—	—	5	2
Eye - - -	1	1	2	—	10	3	2	—	2	—	17	4
Generative system - - -	—	—	—	—	1	1	—	—	—	—	1	1
Nervous system - - -	24	3	19	3	75	11	12	3	10	1	140	21
Organs of locomotion - - -	1	—	—	—	8	—	1	—	—	—	10	—
Respiratory system - - -	2	1	8	—	22	1	2	1	3	—	37	3
Skin - - -	—	—	—	—	1	—	1	—	—	—	2	—
Urinary system - - -	6	—	4	—	8	—	—	—	4	—	22	—
NOT INCLUDED UNDER ABOVE HEADINGS.												
Accident - - -	1	1	3	—	7	—	—	—	3	—	14	1
Telegraphists' cramp - - -	—	—	—	—	—	1	—	—	—	—	—	1
Tumours—												
Malignant - - -	1	1	1	—	4	—	1	—	1	—	8	1
Non-malignant - - -	—	1	—	1	1	1	1	—	—	—	2	3
Not stated - - -	—	—	—	—	1	—	1	—	—	—	2	—
Totals - - -	97	53	92	9	284	54	34	10	45	3	552	129

APPENDIX F.—continued.

AVERAGE SICK ABSENCE OF THE STAFF AT THOSE TOWNS WHERE DEPARTMENTAL MEDICAL OFFICERS ARE EMPLOYED, EXPRESSED IN DAYS PER OFFICER EMPLOYED, FOR EACH OF THE LAST TEN YEARS.

YEAR.	ESTABLISHED STAFF.										UNESTABLISHED STAFF.									
	ENGLAND AND WALES.						SCOTLAND.		IRELAND.		ENGLAND AND WALES.						SCOTLAND.		IRELAND.	
	Chief Office.		Metropolitan Districts.		Country.		Men.	Women.	Men.	Women.	Chief Office.		Metropolitan Districts.		Country.		Men.	Women.	Men.	Women.
	Men.	Women.	Men.	Women.	Men.	Women.					Men.	Women.								
1899	8.1	11.4	8.7	12.1	8.1	11.7	6.7	10.8	10.0	14.2	6.7	11.1	6.4	5.8	4.3	6.7	4.2	4.4	7.6	5.1
1900	7.1	10.2	8.1	10.5	8.0	13.0	6.2	10.1	10.2	12.7	6.7	9.5	5.7	6.7	5.2	8.1	4.4	4.5	5.4	6.0
1901	7.0	11.0	8.6	12.0	7.6	13.9	6.2	8.5	10.0	15.6	6.4	12.3	5.5	6.3	4.2	8.1	4.5	5.3	4.6	9.1
1902	6.8	11.6	9.0	12.9	7.8	12.1	6.1	8.4	9.0	13.8	5.9	9.5	5.2	6.6	4.8	5.5	4.8	4.9	5.2	6.0
1903	6.4	10.4	8.2	12.0	7.7	10.8	6.3	8.6	10.3	16.1	5.2	9.3	4.5	4.7	4.4	5.1	4.1	4.5	4.4	7.3
1904	6.6	11.0	8.2	11.5	7.3	11.4	6.2	9.9	9.7	14.6	5.8	6.2	4.7	7.7	3.8	3.7	2.8	3.5	4.2	4.8
1905	6.5	9.1	7.9	10.4	7.1	9.9	5.5	8.9	10.2	15.7	5.1	7.3	5.0	5.5	4.1	4.9	3.5	4.1	4.2	7.7
1906	7.4	9.9	8.9	10.1	7.1	10.2	6.0	7.2	9.2	13.9	5.8	7.2	5.0	5.1	4.0	5.0	3.5	3.0	3.6	4.8
1907	7.3	11.3	8.5	11.4	7.6	9.9	5.6	8.6	8.6	13.6	5.2	6.7	4.8	5.2	4.4	4.5	3.7	2.5	3.8	6.5
1908	7.9	11.2	8.7	13.3	7.7	10.7	5.4	7.9	9.3	13.2	5.0	6.2	4.9	7.2	4.4	5.2	3.6	3.7	2.8	5.8

APPENDIX G.

STATEMENT showing the NUMBER of UNDELIVERED POSTAL PACKETS, &c., dealt with in each of the last TEN YEARS.

Year.	Letters.		Post-cards.	*Halfpenny Packets.	Newspapers.	Parcels.		†Unaddressed Postal Packets and Articles found loose.	Total.	Increase or decrease per cent.
	Total No.	No. which could neither be delivered to the Addressees nor returned to the Senders.				Total No.	No. which could neither be delivered to the Addressees nor returned to the Senders.			
1899-1900	8,954,041	698,294	1,495,085	10,613,853	597,919	206,944	51,066	—	21,867,842	dec. '53 inc. 10·54
1900-01	9,786,870	882,421	1,619,391	11,911,614	627,642	227,252	53,059	—	24,172,769	
1901-02	10,183,866	986,120	1,757,081	11,523,272	615,285	242,472	58,272	—	24,321,976	-62
* 1902-03	10,905,023	1,188,981	1,888,093	12,034,150	600,661	255,289	57,879	—	25,683,216	5·60
1903-04	11,148,281	1,238,430	2,245,327	12,427,681	633,179	253,515	55,684	—	26,707,983	3·99
1904-05	10,743,447	1,058,575	2,386,124	12,559,049	622,731	257,389	60,388	—	26,568,740	dec. '52 inc. 2·00
1905-06	10,868,272	1,008,017	2,656,770	12,439,377	473,346	248,526	52,381	412,883	27,099,174	
1906-07	11,120,695	980,960	3,152,027	14,276,123	551,599	242,865	47,147	423,085	29,766,394	9·84
1907-08	11,745,992	1,145,551	3,440,176	14,818,769	585,448	244,406	14,722	442,957	31,277,748	5·08
1908-09	11,995,331	1,292,226	3,202,594	14,048,211	592,006	243,235	13,762	427,324	30,509,201	dec. 2·46

* Including also foreign printed papers, &c. over 2 oz. in weight, prepaid at the halfpenny rate.

† Included under the various headings of the Statement up to 1904-05.

APPENDIX H.

Telegrams.

STATEMENT showing the TOTAL NUMBER of TELEGRAMS forwarded from TELEGRAPH OFFICES in the UNITED KINGDOM in each of the last TEN YEARS.

Year.	England and Wales.			Scotland.	Ireland.	United Kingdom.	(+) Increase or (-) Decrease per cent.
	Provinces	London.	Total.				
1899-1900	46,145,000	29,971,000	76,116,000	9,388,000	4,911,000	90,415,000	+ 3.9
1900-01	46,029,000	29,356,000	75,385,000	9,289,000	4,903,000	89,577,000	- .9
1901-02	46,858,000	28,924,000	75,782,000	9,730,000	4,920,000	90,432,000	+ 1.0
1902-03	47,673,000	30,103,000	77,777,000	9,566,000	5,128,000	92,471,000	+ 2.3
1903-04	47,341,000	28,216,000	75,557,000	9,302,000	5,138,000	89,997,000	- 2.7
1904-05	46,427,000	28,364,000	74,791,000	9,071,000	5,107,000	88,969,000	- 1.1
1905-06	46,979,000	28,201,000	75,180,000	9,128,000	5,170,000	89,478,000	+ .6
1906-07	47,507,000	27,463,000	74,970,000	9,203,000	5,320,000	89,493,000	+ .02
1907-08	46,683,000	24,947,000	71,630,000	8,945,000	5,394,000	85,969,000	- 3.9*
1908-09	45,757,000	25,052,000	70,809,000	8,690,000	5,340,000	84,825,000	- 1.3

* Decrease partly due to an alteration in the system of numbering certain Telegrams. The actual decrease is estimated to have been 1,217,000 Telegrams (1.4 per cent.).

APPENDIX H.—*continued.***Telegrams—*continued.***

STATEMENT showing the NUMBER of TELEGRAMS forwarded from TELEGRAPH OFFICES in the UNITED KINGDOM during the Years 1907-1908 and 1908-1909; and the Increase or Decrease in each Month of the latter Year as compared with the corresponding Month of the former Year.

Month.	1907-1908.	1908-1909.	(+) Increase. (-) Decrease.
April - - - - -	6,970,000	6,756,000	- 214,000
May - - - - -	7,752,000	7,301,000	- 451,000
June - - - - -	7,589,000	7,886,000	+ 297,000
July - - - - -	8,413,000	8,428,000	+ 15,000
August - - - - -	8,388,000	7,906,000	- 482,000
September - - - - -	7,546,000	7,861,000	+ 315,000
October - - - - -	7,689,000	7,561,000	- 128,000
November - - - - -	6,738,000	6,561,000	- 177,000
December - - - - -	6,256,000	6,435,000	+ 179,000
January - - - - -	6,291,000	5,972,000	- 319,000
February - - - - -	5,921,000	5,577,000	- 344,000
March - - - - -	6,416,000	6,581,000	+ 165,000
Totals - - - - -	85,969,000	84,825,000	- 1,144,000

APPENDIX J.

Post Office
STATEMENT of BUSINESS for

Year ended 31st Dec.	Number of Post Office Savings Bank Offices.	Deposits.*				Withdrawals.†		
		Number.	Amount.	Average Amount.	Number of Persons who deposited in Single Sums the Entire Amount allowed in the Year.	Number.	Amount.	Average Amount.
			£	£ s. d.			£	£ s. d.
1899	12,995	14,654,609	39,122,160	2 13 5	51,700	5,094,033	35,171,475	6 18 1
1900	13,341	14,969,849	40,516,434	2 14 2	48,100	5,406,347	38,231,372	7 1 5
1901	13,672	15,018,645	41,452,051	2 15 2	48,900	5,748,624	39,890,043	6 18 9
1902	14,048	15,250,316	42,217,003	2 15 4	49,800	6,012,983	41,395,800	6 17 8
1903	14,362	15,325,618	40,857,206	2 13 4	46,200	6,180,419	42,786,025	6 18 5
1904	14,614	15,466,928	40,612,967	2 12 6	43,000	6,276,929	41,904,393	6 13 6
1905	14,862	16,320,204	42,300,617	2 11 10	44,700	7,155,283	42,096,037	5 17 8
1906	15,055	17,997,023	43,980,579	2 8 11	43,200	8,629,749	43,763,002	5 1 5
1907	15,166	18,771,969	44,217,288	2 7 1	39,500	9,308,247	46,433,632	4 19 9
1908	15,289	18,379,991	44,770,782	2 8 9	42,000	9,922,169	45,395,400	4 11 6

* Including as well as Ordinary Deposits, (a) Deposits for immediate investment in Stock; (b) amounts realised by sale of Stock, and Stock Certificates obtained, the amount, when Stock is sold, or a Stock Certificate obtained, being placed to the credit of the Savings Bank Account so as to be dealt with as a withdrawal; (c) Dividends; (d) Deposits for purchases of Annuities and payment of Insurance premiums, and (e) amounts credited to Accounts in respect of sums payable to Annuity and Insurance and their representatives. For particulars, see statements of Government Stock business and Annuity and Insurance business.

† Including, as well as Ordinary Withdrawals, (a) Withdrawals for investment in Stock, with commission; (b) Withdrawals consequent on sale of Stock and obtaining Stock Certificates, with commission and fees; (c) Withdrawals for purchase of Annuities and payment of Insurance premiums; and (d) amounts paid to Annuity and Insurance and their representatives. For particulars, see statements of Government Stock business and Annuity and Insurance business.

APPENDIX J.

Savings Bank.

each of the last TEN YEARS.

Interest credited to Depositors.	Amount including Interest standing to credit of all open Accounts at close of the Year.	Number of Accounts.			Average Amount standing to credit of each open Account.	Expenses of Management.			Year ended 31st Dec.
		Opened.	Closed.	Remain- ing open at close of the Year.		Total.	Rate per Cent. to Total Amount standing to credit of Depositors.	Average Cost per Transaction.	
£	£				£ s. d.	£	s. d.	d.	
3,023,821	130,118,605	1,373,799	957,621	8,046,680	16 3 5	473,877	7 3½	5·76	1899
3,145,978	135,549,645	1,376,171	962,868	8,439,983	16 1 3	487,025	7 2½	5·74	1900
3,281,263	140,392,916	1,376,846	1,029,154	8,787,675	15 19 6	506,093	7 2½	5·85	1901
3,390,969	144,605,068	1,386,962	1,041,476	9,133,161	15 16 8	526,007	7 3½	5·94	1902
3,458,878	146,135,147	1,342,040	1,071,349	9,403,852	15 10 10	549,140	7 6	6·13	1903
3,495,633	148,339,354	1,350,857	1,080,992	9,673,717	15 6 8	537,672	7 2½	5·93	1904
3,567,206	152,111,140	1,435,329	1,145,997	9,963,049	15 5 4	527,856	6 11½	5·40	1905
3,667,729	155,996,446	1,600,105	1,230,370	10,332,784	15 1 11	598,925	7 8	5·40	1906
3,719,975	157,500,077	1,674,586	1,314,815	10,692,555	14 14 7	585,603	7 5	5·01	1907
3,772,755	160,648,214	1,657,131	1,331,435	11,018,251	14 11 7	679,678	8 5½	5·76	1908

‡ Prior to the passing of the Post Office Savings Bank Act, 1861, it was estimated (*see* Parliamentary Paper, No. 523, 1861) that the average cost of each transaction would be 7d.

APPENDIX J.—continued.

Post Office Savings Bank—continued.
GOVERNMENT STOCK.

TABLE showing the BUSINESS done during the last TEN YEARS.

Year.	Stock Accounts.			Investments.			Dividends credited to Stock Holders.		Sales.		Stock Certificates obtained.		Transfers.		Commission and Bank of England Fees.		Stock remaining to credit of Stock Holders at close of the Year.	
	Number opened.	Number closed.	Number remaining open at close of the Year.	Number.	Amount of Money invested.	Amount of Stock bought.	Number.	Amount.	Number.	Amount of Stock sold.	Amount realised.	Amount.	To Bank of England.	To Trustee Savings Banks.	From Trustee Savings Banks.	Bank of England Fees.	Total.	Average per Account.
1899	13,938	7,011	78,998	26,531	£ 1,770,170	£ 1,670,354	294,186	£ 212,362	11,789	£ 686,135	£ 735,721	£ 4,950	£ 46,639	£ 1,094	£ 3,543	£ 2,932	£ 8,397,213	106
1900	22,044	7,077	93,965	41,030	2,830,513	2,830,918	339,463	255,095	12,028	678,374	678,510	6,000	75,189	1,448	1,170	4,274	10,468,290	111
1901	23,333	7,789	109,509	46,550	3,065,596	3,192,154	398,597	316,068	13,574	761,629	729,531	6,100	107,851	727	2,053	4,901	12,786,190	117
1902	19,184	9,997	118,696	40,893	2,592,088	2,694,447	451,234	371,407	17,221	1,054,193	1,012,042	9,300	133,133	832	2,438	4,656	14,285,617	120
1903	22,912	10,265	131,343	47,726	2,921,499	3,131,172	487,145	400,381	17,742	1,085,578	1,012,228	14,400	151,948	2,165	2,850	5,262	16,165,548	123
1904	17,985	10,746	138,582	39,633	2,293,877	2,507,546	538,378	438,315	18,948	1,131,543	1,027,016	10,450	172,640	2,705	2,194	4,613	17,357,950	125
1905	14,893	13,483	139,992	32,301	2,056,041	2,212,265	554,158	460,387	22,824	1,507,219	1,398,811	10,550	174,707	2,495	2,380	4,538	17,877,644	128
1906	16,938	11,811	145,119	39,134	2,451,570	2,674,494	563,321	478,415	20,004	1,349,044	1,234,022	9,400	207,085	3,467	3,057	4,919	18,986,199	131
1907	20,293	11,182	154,230	44,652	2,649,248	3,028,194	591,467	514,928	19,168	1,232,252	1,083,884	14,800	236,944	2,065	5,565	5,235	20,533,897	133
1908	13,352	14,820	153,262	29,519	1,783,382	1,693,174	612,406	540,114	24,467	1,671,512	1,503,555	11,200	214,856	3,104	2,586	4,458	20,628,985	135

APPENDIX J.—continued.

Post Office Savings Bank—continued.

ANNUITIES AND LIFE INSURANCES.

(I.) TABLE showing the BUSINESS done during the last TEN YEARS.

Y ^{ear} .	ANNUITIES.										LIFE INSURANCES.					
	Immediate.					Deferred.					Contracts entered into.		Receipts.		Amount of Claims on Death and Surrender.	
	Contracts entered into.		Receipts.		Payments.		Contracts entered into.		Receipts.							Payments.
	No.	Amount of Annuities.	Amount.	No.	Amount of Annuities.	No.	Amount.	No.	Amount.	No.	Amount.	No.	Amount.			
														No.		Amount.
1899	2,031	\$ 54,044	\$ 719,419	29,747	\$ 472,532	147	\$ 3,085	1,347	\$ 23,617	942	\$ 11,891	\$ 43,723	21,256	\$ 21,575	342	\$ 10,663
1900	2,258	49,893	728,142	31,409	503,297	137	2,722	1,343	19,852	1,020	12,921	35,512	21,460	22,185	364	15,422
1901	1,764	42,268	562,159	33,269	527,371	142	3,066	1,365	23,680	1,075	14,175	44,296	21,972	22,647	380	12,992
1902	1,679	42,791	558,770	34,375	548,251	139	2,973	1,353	21,764	1,164	17,172	34,646	22,553	23,045	389	14,646
1903	1,763	43,973	557,981	35,463	571,904	157	3,424	1,366	24,489	1,210	14,689	31,413	22,672	23,063	387	13,126
1904	1,768	41,000	520,538	36,607	594,502	128	2,492	1,366	21,011	1,297	16,167	28,629	22,323	23,031	465	16,878
1905	1,840	45,488	573,205	37,686	614,406	158	3,204	1,386	24,287	1,347	16,965	37,011	21,836	23,376	449	15,593
1906	1,797	43,241	544,571	38,820	635,492	132	2,926	1,352	23,311	1,501	20,637	28,054	22,219	23,803	406	14,634
1907	1,685	37,940	471,385	39,738	652,841	157	2,890	1,323	22,053	1,578	19,494	24,912	21,759	23,432	420	15,753
1908	1,812	41,053	513,446	40,417	663,038	137	2,560	1,321	19,524	1,681	21,972	21,585	21,366	23,071	443	18,349

APPENDIX J.—*continued.*Post Office Savings Bank—*continued.*

(II.) TABLE showing the Number and Amount of CONTRACTS entered into from the Commencement of Business on 17th April, 1865, to the 31st December, 1908, and the Number and Amount of CONTRACTS in existence on the 31st December, 1908.

	CONTRACTS ENTERED INTO				TOTAL.	
	From 17th April, 1865 to 31st December, 1907.		From 1st Jan., 1908 to 31st December, 1908.			
	No.	Amount.	No.	Amount.	No.	Amount.
		£ s. d.		£ s. d.		£ s. d.
Contracts for Annuities entered into from the commencement of business on 17th April, 1865, to 31st December, 1908, viz.—						.
Immediate Annuities -	49,296	1,073,109 6 2	1,812	41,053 0 6	51,108	1,114,162 6 8
Deferred Annuities and Monthly Allowances, Money not returnable - - - -	1,562	28,005 7 8	46	695 1 6	1,608	28,700 9 2
Deferred Annuities and Monthly Allowances, Money returnable -	2,879	63,152 19 0	91	1,864 11 6	2,970	65,017 10 6
Contracts for Sums payable at Death entered into from the commencement of business on the 17th April, 1865, to the 31st December, 1908 - - - - -	24,774	1,486,087 11 10	421	21,535 8 1	25,195	1,507,622 19 11
Contracts for Annuities in existence on the 31st December, 1908, viz.—						
Immediate Annuities -	—	—	—	—	28,417	687,566 0 8
Deferred Annuities and Monthly Allowances, Money not returnable - - - -	—	—	—	—	1,235	21,496 1 6
Deferred Annuities and Monthly Allowances, Money returnable -	—	—	—	—	1,425	30,274 0 0
Contracts for Sums payable at Death, in existence on the 31st December, 1908 -	—	—	—	—	13,102	756,999 1 10

APPENDIX J.—*continued.*

Post Office Savings Bank—*continued.*

**EXTRACT from PARLIAMENTARY PAPER (209) ORDERED
by the HOUSE OF COMMONS to be printed, 30th June 1909.**

APPENDIX J.—*continued.*

Post Office Savings Bank.

ACCOUNT of all Deposits Received and Paid from 1st January to 31st December, 1908.

	£	s.	d.	£	s.	d.
Balance brought forward -	157,500,076	13	8			
To Cash received from Depositors from 1st January to 31st December, 1908 -	44,770,782	0	0*	£	s.	d.
	202,270,858	13	8	-	45,278,360	2 4†
To interest thereon up to 31st December, 1908, computed according to Act 24 Vict., c. 14, sections 7 and 8, and added to the Principal Money of the said Depositors -	3,772,755	14	11	-	117,040	0 10
	206,043,614	8	7		45,395,400	3 2
					160,648,214	5 5
					206,043,614	8 7
By Repayments from 1st January to 31st December, 1908, viz.—						
Cash Paid						
Warrants issued, but not						
cashied at date						
Balance due at the close of the Year 1908, to all Depositors, inclusive of Interest to 31st December, 1908						

* Including the sum realised by the sale of Government Stock, viz., 1,516,859*l.* 14*s.* 4*d.*; the amount of dividends credited to Depositors, viz., 540,113*l.* 14*s.* 1*d.*; the amount credited as payments under Annuity and Insurance Contracts, viz., 703,358*l.* 18*s.* 6*d.*; and the amount of Government Stock transferred to the Depositors' own names in the books of the Bank of England, viz., 214,855*l.* 18*s.* 1*d.*

† Including the sum invested on behalf of Depositors in the purchase of Government Stock, and the Commission and Fees, amounting together to 1,790,426*l.* 5*s.* 8*d.*; the sum withdrawn as purchase money under Annuity and Insurance Contracts, viz., 556,037*l.* 3*s.* 8*d.*, and the amount of Government Stock transferred to the Depositors' own names in the books of the Bank of England, viz., 214,855*l.* 18*s.* 1*d.*

General Post Office, { CHARLES A. KING, Comptroller and Accountant General.
21st June, 1909. { H. DAVIES, Controller of Post Office Savings Bank.

SYDNEY BUXTON,
Postmaster General.

APPENDIX K.

Money Orders.

MONEY ORDER BUSINESS in each of the last TEN YEARS.

YEAR.	INLAND ORDERS.			COLONIAL ORDERS.			FOREIGN ORDERS.				TOTAL.		
	Number.	Amount.	Increase per cent. on Number.	Number.	Amount.	Increase per cent. on Number.	Number.	Amount.	Increase per cent. on Number.	Increase per cent. on Amount.	Number.	Amount.	Increase per cent. on Number.
1899-1900	10,292,890	£ 30,565,351	5·8	617,340	£ 1,876,411	4·0	1,177,229	£ 2,819,500	1·4	·1	12,087,459	£ 35,201,262	5·3
1900-01	11,375,518	34,454,859	10·5	680,370	2,074,495	10·2	1,207,679	2,845,311	2·5	·9	13,263,567	39,374,665	9·7
1901-02	11,892,333	36,660,120	4·5	784,735	2,463,714	15·3	1,286,342	3,045,367	6·5	7·0	13,963,410	42,169,201	5·2
1902-03	12,151,861	38,920,596	2·2	980,492	3,124,551	24·9	1,399,071	3,357,348	8·8	10·2	14,531,424	45,402,495	4·1
1903-04	11,261,745	35,430,349	Decrease. 7·3	1,188,073	3,608,353	21·2	1,514,355	3,677,504	8·2	9·5	13,964,173	42,716,206	Decrease. 3·9
1904-05	10,697,020	35,870,862	5·0	1,165,989	3,478,663	Decrease. 1·9	1,541,937	3,811,937	1·8	3·7	13,404,946	43,161,462	Increase. 1·0
1905-06	10,758,785	36,872,608	Increase. 6	1,124,316	3,490,751	3·6	1,713,052	4,249,426	11·1	11·5	13,596,153	44,612,785	Increase. 1·4
1906-07	10,845,032	37,997,339	8	1,069,294	3,534,623	2·2	1,875,859	4,803,921	9·5	13·0	13,819,685	46,355,883	1·6
1907-08	10,431,497	39,060,590	Decrease. 3·8	1,195,504	3,627,710	Increase. 8·8	2,001,674	5,463,760	6·7	13·7	13,628,675	48,352,060	Decrease. 1·4
1908-09	10,232,448	39,307,038	1·9	1,150,183	3,625,306	Decrease. 3·8	1,998,804	5,209,432	Decrease. 1	4·7	13,381,435	48,141,776	Decrease. 1·8

APPENDIX K.—continued.
Money Orders—continued.

Year.	ENGLAND AND WALES.					SCOTLAND.					IRELAND.				
	Number	Amount.	Increase per cent. on Number.	Increase per cent. on Amount.	Number of Money Orders issued to each 100 of population.	Number.	Amount.	Increase per cent. on Number.	Increase per cent. on Amount.	Number of Money Orders issued to each 100 of population.	Number.	Amount.	Increase per cent. on Number.	Increase per cent. on Amount.	Number of Money Orders issued to each 100 of population.
1899-1900	8,656,871	£ 25,687,094	6.0	6.5	27.1	1,047,134	£ 3,119,470	4.3	7.1	24.4	588,885	£ 1,688,787	5.4	7.5	13.0
1900-01	9,638,474	28,213,745	11.3	13.6	29.9	1,094,431	3,344,691	4.5	7.2	25.3	642,613	1,896,423	9.1	12.2	14.2
1901-02	10,067,038	31,006,654	4.4	6.1	30.7	1,141,433	3,556,429	4.2	6.3	25.4	683,862	2,097,037	6.4	10.5	15.3
1902-03	10,262,129	32,746,950	1.9	5.6	31.0	1,179,371	3,832,949	3.3	7.6	26.0	710,161	2,340,697	3.8	11.6	16.0
1903-04	9,545,038	29,845,359	Decrease.	8.9	28.5	1,094,269	3,600,062	Decrease.	6.1	23.9	622,438	1,984,928	Decrease.	13.2	14.1
1904-05	9,125,126	30,171,772	Dec.	1.1	26.9	997,410	3,671,810	Dec.	2.0	21.5	574,484	2,027,280	Dec.	2.1	13.0
1905-06	9,171,125	30,979,148	Inc.	2.7	26.8	996,047	3,807,177	1	3.7	21.3	591,613	2,086,283	Inc.	2.9	13.5
1906-07	9,262,473	31,926,365	1.0	3.1	26.7	987,845	3,917,100	9	2.9	20.9	595,214	2,153,874	8	3.2	13.6
1907-08	8,838,097	32,726,403	Dec.	2.5	25.3	1,004,928	4,137,883	Inc.	5.6	21.0	588,472	2,196,304	Dec.	1.9	13.4
1908-09	8,668,230	£ 32,941,366	1.9	.7	24.5	992,858	4,149,157	Dec.	1.2	20.6	571,360	2,216,515	2.9	.9	13.1

APPENDIX K.—*continued.***Money Orders—continued.**

STATEMENT showing the NUMBER and AMOUNT of MONEY ORDERS issued by and for other GOVERNMENT DEPARTMENTS, and by the METROPOLITAN POLICE, in each of the last TEN YEARS.

Year.	Admiralty.	Board of Education, England.	Board of Public Works, Ireland.	Board of Trade.	Civil Service Commission.	India Office.	Inland Revenue.	Metropolitan Police.	Office or Works.	Scotch Education Department.	War Office.	Total.
1899— 1900	{ Number 534,102 Amount £ 1,583,155	{ 12,163 106,664	165	{ 76,216 80,178	{ 1,264 4,202	{ 1,413 5,573	{ 659,228 2,054,326	{ 16,272 214,715	{ 4,410 18,074	437	{ 797,234 2,769,796	{ 2,102,904 6,841,371
1900-01	{ Number 554,656 Amount £ 1,629,434	{ 12,630 106,644	262	{ 77,966 49,765	{ 1,391 4,515	{ 1,302 4,893	{ 679,095 2,239,242	{ 22,729 235,644	{ 4,829 20,561	375	{ 1,363,053 4,397,446	{ 2,718,228 8,692,757
1901-02	{ Number 569,718 Amount £ 1,663,595	{ 11,662 103,218	126	{ 76,572 47,516	{ 1,390 4,426	{ 1,233 4,621	{ 746,053 2,725,508	{ 18,583 240,165	{ 6,644 36,851	457	{ 1,329,518 4,269,201	{ 2,761,956 9,099,890
1902-03	{ Number 588,432 Amount £ 1,702,009	{ 11,900 105,831	317	{ 79,403 49,018	{ 1,396 4,279	{ 1,233 4,512	{ 791,257 3,040,859	{ 17,763 248,862	{ 6,322 33,067	478	{ 1,149,963 3,666,588	{ 2,648,464 8,860,295
1903-04	{ Number 614,097 Amount £ 1,756,525	{ 7,631 42,298	396	{ 76,428 48,864	{ 1,203 4,072	{ 1,151 4,261	{ 836,446 3,162,144	{ 17,814 259,897	{ 7,252 40,805	979	{ 948,893 2,881,701	{ 2,512,290 8,204,276
1904-05	{ Number 638,187 Amount £ 1,828,404	{ 7,647 41,508	209	{ 75,395 46,718	{ 962 3,804	{ 1,098 4,158	{ 899,916 2,983,218	{ 18,651 272,038	{ 7,150 44,635	1,170	{ 970,698 2,956,680	{ 2,621,083 8,185,280
1905-06	{ Number 628,786 Amount £ 1,867,702	{ 6,775 37,660	1,210	{ 78,592 46,655	{ 709 2,230	{ 1,074 4,064	{ 909,504 3,179,639	{ 19,431 285,635	{ 7,301 47,006	533	{ 1,043,550 3,095,826	{ 2,694,395 8,572,970
1906-07	{ Number 608,818 Amount £ 1,904,391	{ 6,011 33,516	2,104	{ 78,606 45,130	{ 927 2,744	{ 1,088 4,341	{ 954,390 3,220,245	{ 20,315 301,082	{ 6,799 49,354	328	{ 1,083,985 3,236,683	{ 2,763,371 8,803,144
1907-08	{ Number 621,491 Amount £ 2,002,658	{ 5,735 31,549	552	{ 70,305 40,867	{ 1,290 2,843	{ 1,058 4,365	{ 991,555 3,294,641	{ 21,484 322,488	{ 7,096 57,006	293	{ 1,124,042 3,378,416	{ 2,844,901 9,138,743
1908-09	{ Number 667,094 Amount £ 2,164,375	{ 5,335 29,880	382	{ 76,332 44,168	{ 1,546 2,994	{ 1,069 4,561	{ 1,016,882 3,287,495	{ 23,194 349,893	{ 6,548 59,054	288	{ 1,171,167 3,525,365	{ 2,969,857 9,471,083

APPENDIX K.—*continued.***Inland Telegraph Money Orders.**

STATEMENT showing the NUMBER and AMOUNT of INLAND TELEGRAPH
MONEY ORDERS issued in each of the last TEN YEARS.

Year.	Number.	Amount.	Increase per cent. on Number.	Increase per cent. on Amount.
		£		
1899-1900	311,943	999,086	21·1	13·8
1900-01	369,165	1,128,661	18·3	13·0
1901-02	411,952	1,240,619	11·6	9·9
1902-03	462,885	1,459,496	12·4	17·6
1903-04	475,738	1,384,925	2·8	dec. 5·1
1904-05	477,691	1,544,488	·4	inc. 11·5
1905-06	503,543	1,646,882	5·4	6·6
1906-07	523,454	1,812,909	4·0	10·1
1907-08	544,692	1,894,588	4·1	4·5
1908-09	587,112	2,018,918	7·8	6·6

APPENDIX K.—continued.
Money Orders—continued.

YEAR.	COLONIAL ORDERS.					FOREIGN ORDERS.										
	ISSUED IN THE UNITED KINGDOM.					ISSUED IN THE UNITED KINGDOM.					ISSUED ABROAD.					
	Number.	Amount.	Increase per cent. on Number.	Increase per cent. on Amount.		Number.	Amount.	Increase per cent. on Number.	Increase per cent. on Amount.		Number.	Amount.	Increase per cent. on Number.	Increase per cent. on Amount.		
1899-1900	142,574	476,631	·2	dec. 4·2	474,766	1,399,780	5·2	2·8	407,128	1,039,489	1·6	2·4	770,101	1,780,011	1·4	dec. 1·1
1900-01	140,772	449,483	dec. 1·2	5·6	539,598	1,625,012	13·6	16·0	426,985	1,080,975	4·8	4·0	780,744	1,764,336	1·3	·8
1901-02	142,114	456,901	inc. ·9	1·6	642,621	2,006,813	19·1	23·4	472,312	1,175,142	10·6	8·7	814,030	1,870,225	4·2	inc. 6·0
1902-03	161,421	559,941	13·6	22·6	819,071	2,564,610	27·5	27·8	525,319	1,329,582	11·2	13·1	873,752	2,027,766	7·3	8·4
1903-04	174,580	584,954	8·2	4·5	1,013,493	3,023,399	23·7	17·9	549,693	1,445,655	4·6	8·7	964,662	2,231,849	10·4	10·1
1904-05	175,562	611,864	·6	4·6	990,427	2,866,799	dec. 2·3	dec. 5·2	520,402	1,375,197	dec. 5·3	dec. 4·9	1,021,535	2,436,740	5·9	9·2
1905-06	176,059	646,821	·3	5·7	948,257	2,843,930	4·3	·8	543,476	1,409,749	inc. 4·4	inc. 2·5	1,169,576	2,839,677	14·5	16·5
1906-07	174,848	699,268	dec. ·7	8·1	924,446	2,935,355	2·5	·3	565,904	1,420,532	4·1	·8	1,309,455	3,383,389	12·0	19·1
1907-08	195,985	865,913	inc. 12·1	23·8	999,519	2,961,797	inc. 8·1	inc. 4·5	573,432	1,480,061	1·3	4·2	1,428,242	3,983,699	9·1	17·7
1908-09	201,469	862,163	2·8	dec. ·4	948,714	2,763,143	dec. 5·1	dec. 6·7	576,987	1,513,383	·6	2·2	1,421,917	3,696,099	dec. ·4	dec. 7·2

APPENDIX K.—*continued.***Money Orders—Colonies.**

TABLE showing the AMOUNT of MONEY ORDER TRANSACTIONS between the UNITED KINGDOM and the COLONIES in each of the last TEN YEARS.

YEAR.	Australia.		British America.		India.		New Zealand.		South Africa.		West Indies.		Other Colonies and Postal Agencies.		TOTAL.	
	Issued in the U.K.	Issued in Australia.	Issued in the U.K.	Issued in America.	Issued in the U.K.	Issued in India.	Issued in the U.K.	Issued in New Zealand.	Issued in the U.K.	Issued in South Africa.	Issued in the U.K.	Issued in W. Indies.	Issued in the U.K.	Issued in Colonies.	Issued in the U.K.	Issued in Colonies.
1899-1900	114,908	244,132	107,786	197,034	103,155	208,194	32,209	112,761	64,641	365,057	14,779	143,194	39,153	127,408	476,631	1,399,780
1900-01	113,131	250,757	107,139	218,653	71,863	218,229	31,206	108,966	70,445	536,622	14,977	142,875	40,722	148,910	449,483	1,625,012
1901-02	113,096	268,616	111,574	252,502	75,973	287,604	32,370	105,959	60,107	788,967	18,069	136,280	45,712	166,885	456,901	2,006,813
1902-03	117,167	257,001	126,740	313,244	97,649	292,662	34,298	120,916	107,224	1,274,496	19,369	131,632	57,404	174,769	559,941	2,564,610
1903-04	116,332	237,369	153,339	452,514	88,572	296,902	36,421	133,347	122,448	1,585,608	17,064	128,000	50,778	189,429	584,954	3,023,399
1904-05	115,504	237,366	174,202	451,289	98,116	323,008	33,256	145,721	118,717	1,369,316	15,693	120,350	56,376	219,749	611,864	2,866,799
1905-06	116,528	236,144	196,685	545,584	110,586	340,044	36,241	153,654	112,420	1,241,583	14,028	101,925	60,333	224,696	646,821	2,843,930
1906-07	116,209	242,840	221,575	735,985	131,383	339,478	37,386	159,180	108,796	1,013,249	14,017	138,224	69,902	206,399	699,268	2,835,355
1907-08	122,527	259,883	276,337	1,104,421	223,033	358,305	39,176	150,930	99,119	787,169	13,214	101,398	92,507	199,690	865,913	2,961,796
1908-09	126,862	270,225	286,220	991,278	220,290	412,356	45,196	187,019	92,605	617,201	11,169	81,290	79,821	203,784	862,163	2,763,143

APPENDIX K.—*continued.***Money Orders—Foreign Countries.**

TABLE showing the AMOUNT OF MONEY ORDER TRANSACTIONS between the UNITED KINGDOM and FOREIGN COUNTRIES in each of the last TEN YEARS.

YEAR.	Austria.		Belgium.		Denmark.		Egypt.		France.		Germany.		Holland.		Hungary.		Italy.	
	Issued in the U.K.	Issued in the Aust.	Issued in the U.K.	Issued in Bel-gium.	Issued in the U.K.	Issued in Den-mark.	Issued in the U.K.	Issued in Egypt.	Issued in the U.K.	Issued in France.	Issued in the U.K.	Issued in Ger-many.	Issued in the U.K.	Issued in Holland.	Issued in the U.K.	Issued in Hun-gary.	Issued in the U.K.	Issued in Italy.
1899-1900	85,680	33,774	40,449	59,766	19,787	21,230	6,094	49,874	155,418	170,130	205,117	172,568	39,654	32,665	20,394	9,845	76,176	16,132
1900-01	81,822	34,619	42,220	58,232	20,406	21,617	6,227	43,725	167,379	165,300	203,319	175,387	33,735	34,427	25,090	11,340	84,819	16,536
1901-02	83,280	38,798	45,691	60,562	22,212	18,380	6,597	41,919	179,374	176,301	219,231	192,552	40,625	35,973	36,960	12,261	94,230	18,807
1902-03	110,524	41,153	50,663	62,964	25,695	25,603	8,738	45,106	193,417	190,659	238,816	202,818	49,532	37,210	45,723	15,074	111,956	20,171
1903-04	159,988	46,002	50,809	66,676	27,177	28,130	9,272	48,005	205,004	212,488	238,639	216,251	60,749	36,119	59,210	19,152	135,599	23,426
1904-05	90,648	45,033	55,371	74,048	27,515	28,165	8,672	55,114	212,306	234,749	236,858	237,842	61,562	39,509	46,891	20,358	133,583	26,138
1905-06	93,766	47,141	61,808	94,677	24,970	28,463	8,733	63,112	227,593	251,938	233,921	261,577	63,353	44,735	13,830	18,850	122,766	27,124
1906-07	89,656	49,592	60,943	108,500	25,429	38,767	9,212	82,261	247,219	238,816	236,061	277,809	64,891	57,536	13,692	20,494	115,703	31,754
1907-08	59,359	57,061	65,368	112,187	24,568	37,673	10,583	90,068	257,512	313,551	238,811	300,199	65,554	68,220	14,251	23,875	110,591	34,890
1908-09	47,763	63,228	63,033	111,096	25,943	34,859	9,756	89,636	267,985	345,771	232,320	311,521	66,916	97,930	15,990	29,757	105,940	40,592

APPENDIX K—continued.

Money Orders—Foreign Countries—continued.

TABLE showing the AMOUNT OF MONEY ORDER TRANSACTIONS between the UNITED KINGDOM and FOREIGN COUNTRIES in each of the last TEN YEARS—continued.

Y.e.a.r.	Japan.		Norway.		Portugal.		Russia.		Sweden.		Switzerland.		United States.		Other Countries.		Total.	
	Issued in the U.K.	Issued in Japan.	Issued in the U.K.	Issued in Norway.	Issued in the U.K.	Issued in Portugal.	Issued in the U.K.	Issued in Russia.	Issued in the U.K.	Issued in Sweden.	Issued in the U.K.	Issued in Switzerland.	Issued in the U.K.	Issued in U.S.	Issued in the U.K.	Issued in Other Countries.		
1899-1900.	£ 1,561	£ 2,344	£ 43,252	£ 15,292	£ 1,116	£ 653	£ —	£ —	£ 43,752	£ 15,425	£ 41,846	£ 31,258	£ 248,312	£ 1,039,444	£ 9,881	£ 110,121	£ 1,039,489	£ 1,780,011
1900-01	2,011	2,700	43,330	21,327	1,529	1,223	—	—	52,602	17,829	42,964	30,794	259,752	1,116,617	8,630	12,663	1,080,975	1,764,356
1901-02	2,375	3,046	50,703	18,094	2,033	1,854	—	—	55,329	16,498	46,481	33,796	281,987	1,189,877	7,634	11,507	1,175,142	1,870,225
1902-03	2,267	4,286	56,542	18,617	2,158	2,340	—	—	64,356	17,527	52,569	36,018	309,524	1,294,404	7,102	13,815	1,329,582	2,027,765
1903-04	2,531	4,224	58,571	18,057	2,394	3,043	—	—	73,948	18,095	54,325	39,288	301,989	1,440,414	7,442	14,479	1,445,655	2,231,849
1904-05	2,935	5,912	52,076	19,740	3,068	4,165	15,713	3,625	56,470	19,154	54,101	43,241	307,902	1,559,579	9,526	20,368	1,375,197	2,436,740
1905-06	3,184	7,323	47,627	21,073	2,601	7,473	85,346	18,404	44,240	19,627	55,814	46,460	301,377	1,850,776	15,820	30,924	1,409,749	2,832,677
1906-07	3,306	6,693	44,602	22,477	3,424	9,262	79,258	25,471	43,235	23,283	55,053	47,511	313,010	2,249,071	15,838	44,092	1,420,532	3,383,389
1907-08	3,704	11,556	40,438	28,616	3,905	8,812	99,387	148,349	40,728	28,954	54,008	52,939	367,637	2,617,140	23,677	49,009	1,480,081	3,983,699
1908-09	4,187	8,217	39,466	26,107	5,302	8,306	107,555	68,939	39,457	27,647	56,135	53,329	375,654	2,336,124	44,901	43,040	1,513,353	3,696,099

APPENDIX K.—*continued.*

Foreign Telegraph Money Orders.
STATEMENT showing the NUMBER and AMOUNT of TELEGRAPH MONEY ORDER TRANSACTIONS between the UNITED KINGDOM and FOREIGN COUNTRIES in each of the last TEN YEARS.

Year.	Austria.	Belgium.	Bulgaria.	Denmark and Faroe Islands.	Egypt.	France.	Germany.	Hungary.	Italy.	Luxembour.	Nether-lands.	Norway.	Roumania.	Sweden.	Switzer-land.	Total.
1899-1900 { Number - Amount £	26 138	176 941	- -	- -	- -	- -	3,101 16,884	2	- -	1 10	403 1,430	21 113	7 43	- -	37 219	3,774 19,769
1900-1 { Number - Amount £	431 2,345	758 4,787	- -	- -	- -	- -	3,811 20,949	89 485	231 1,687	- -	922 3,349	243 1,558	57 267	19 135	266 1,610	6,827 37,172
1901-2 { Number - Amount £	562 2,855	1,049 6,304	- -	- -	20 195	2,227 13,471	4,606 24,537	189 1,659	456 3,252	10 71	1,643 7,194	373 355	53 326	137 880	403 2,634	11,678 65,733
1902-3 { Number - Amount £	701 3,705	1,199 7,739	- -	- -	38 319	3,340 19,188	5,094 26,887	187 1,031	552 3,471	11 70	2,372 9,782	351 1,973	57 360	199 1,323	410 2,503	14,511 78,351
1903-4 { Number - Amount £	910 4,845	995 5,531	- -	- -	31 294	4,557 26,700	5,643 30,738	229 1,337	614 4,379	11 32	2,683 10,096	398 2,177	80 484	233 1,479	507 3,353	16,891 91,485
1904-5 { Number - Amount £	665 5,218	907 7,718	- -	- -	32 523	4,876 28,319	5,426 42,128	220 2,106	610 6,356	9 41	2,404 10,951	367 3,046	76 554	182 1,451	552 5,306	16,526 113,717
1905-6 { Number - Amount £	21 7,514	1,297 16,699	- -	17 127	71 1,270	5,383 33,926	5,834 46,586	227 2,036	686 6,837	7 31	3,161 13,707	404 3,121	99 678	197 1,799	583 5,071	18,787 139,402
1906-7 { Number - Amount £	802 7,412	1,590 20,737	- -	229 1,751	96 2,121	5,149 55,073	5,958 50,470	237 2,337	733 7,185	9 116	3,935 23,651	372 2,861	122 714	256 2,632	595 5,006	20,068 182,066
1907-8 { Number - Amount £	919 9,658	1,743 21,182	11 159	236 2,089	177 2,955	6,021 58,881	6,785 61,150	244 1,950	728 6,915	12 144	5,748 35,794	407 3,727	91 654	334 4,317	646 6,231	24,052 215,756
1908-9 { Number - Amount £	896 7,649	1,429 15,225	13 114	294 2,222	151 2,199	6,746 68,763	7,102 60,984	370 3,736	959 11,211	5 37	6,751 60,426	457 3,731	59 425	378 3,907	747 6,637	26,357 247,216

APPENDIX L.

Postal Orders.

STATEMENT showing the NUMBER and VALUE of POSTAL ORDER issued in each of the last TEN YEARS.

Year.	IN THE UNITED KINGDOM.			IN THE COLONIES.			ON BOARD H.M. SHIPS.			TOTAL.			STAMPS AFFIXED.							
	Number.	Value.	Increase per cent.	Number.	Value.	Increase per cent.	Number.	Value.	Increase per cent.	Number.	Value.	Increase per cent.	Value.	Increase per cent.						
1899-1900	81,926,000	28,322,000	7-0	5-2	£	190,000	112,000	14-3	15-9	313,000	200,000	7-6	7-5	82,429,000	28,854,000	7-0	5-2	£	188,000	19-0
1900-01	83,185,000	29,761,000	4-0	4-3	205,000	121,000	7-9	8-0	351,000	224,000	12-1	12-0	85,741,000	30,106,000	4-0	4-4	180,000	4-3	dec.	4-3
1901-02	88,388,000	30,831,000	3-8	3-9	*2,300,000	*1,794,000	1,022-0	1,382-6	384,000	235,000	3-7	4-9	91,052,000	32,960,000	6-2	9-5	172,000	4-4	inc.	4-4
1902-03	92,050,000	31,954,000	4-1	3-3	*804,000	*679,000	dec.	dec.	414,000	267,000	13-7	13-6	93,268,000	32,900,000	2-4	2-4	179,000	4-1	dec.	4-1
1903-04	+89,810,000	33,817,000	dec.	5-8	312,000	196,000	61-2	72-6	449,000	298,000	8-5	11-6	90,571,000	34,301,000	dec.	2-9	185,000	3-4	inc.	3-4
1904-05	90,371,000	36,065,000	inc.	6-7	376,000	225,000	20-5	21-0	502,000	343,000	11-8	15-1	91,249,000	36,665,000	inc.	7	196,000	5-9	inc.	5-9
1905-06	96,070,000	38,019,000	6-3	5-3	658,000	387,000	75-0	72-0	548,000	364,000	8-2	6-1	97,271,000	38,770,000	6-6	5-7	215,000	9-7	inc.	9-7
1906-07	100,584,000	39,910,000	4-7	5-0	1,074,000	574,000	63-2	48-3	589,000	394,000	8-5	8-2	102,247,000	40,378,000	5-1	5-4	218,000	1-4	inc.	1-4
1907-08	122,893,000	43,115,000	22-24	8-0	1,716,000	1,091,000	59-8	90-1	655,000	408,000	11-2	3-6	125,264,000	44,614,000	22-54	9-1	236,000	8-3	dec.	8-3
1908-09	115,833,000	44,059,000	5-7	3-2	2,726,000	1,717,000	58-9	57-4	721,000	437,000	10-1	7-1	119,280,000	46,213,000	4-8	3-6	250,000	5-9	dec.	5-9

* Including Postal Orders issued by the Army Post Office in South Africa.

† Falling off in number due to the increased number of denominations.

‡ Large increase due to "Limerick" competitions.

APPENDIX L.—*continued.*

Postal Orders—*continued.*

STATEMENT showing the NUMBER of each CLASS of POSTAL ORDERS issued in each of the last TEN YEARS.

Year.	NUMBER, IN THOUSANDS ('000 OMITTED).																		
	s.	d.	s.	d.	s.	d.	s.	d.	s.	d.	s.	d.	s.	d.	s.	d.	s.	d.	s.
	6	1 0	1 6	2 0	2 6	3 0	3 6	4 0	4 6	5 0	5 6	6 0	6 6	7 0	7 6	8 0	8 6	9 0	9 6
1899-1900	—	8,921	5,094	6,267	5,432	4,599	2,678	5,428	2,239	11,719	—	—	—	—	3,740	—	—	—	—
1900-01	—	8,245	5,365	6,564	5,730	5,030	2,956	5,662	2,363	12,401	—	—	—	—	3,839	—	—	—	—
1901-02	—	7,889	5,658	6,828	6,142	5,241	3,146	5,943	2,556	13,167	—	—	—	—	4,204	—	—	—	—
1902-03	—	8,289	5,929	7,223	6,478	5,462	3,145	6,266	2,670	13,673	—	—	—	—	4,318	—	—	—	—
1903-04	381	6,671	4,420	6,558	6,431	5,067	2,544	4,844	1,934	10,913	757	1,969	740	1,143	2,774	1,218	512	732	442
1904-05	718	5,973	3,598	6,414	6,537	4,823	2,305	4,260	1,689	9,744	1,136	2,773	1,069	1,568	2,055	1,691	717	1,012	603
1905-06	1,255	6,769	3,834	6,842	6,879	5,072	2,406	4,479	1,807	10,081	1,231	2,981	1,181	1,672	2,082	1,869	807	1,082	632
1906-07	1,406	7,105	3,926	7,464	7,402	5,164	2,482	4,516	1,832	10,244	1,294	3,103	1,307	1,740	2,159	1,942	890	1,124	703
1907-08	414,735	8,798	4,806	8,454	8,582	5,575	2,659	4,762	1,991	10,572	1,377	3,290	1,386	1,842	2,240	2,058	911	1,224	780
1908-09	4,386	9,209	4,543	8,866	8,605	5,820	2,799	4,928	2,036	10,806	1,485	3,390	1,394	1,905	2,254	2,115	957	1,283	855

* These Orders were not issued prior to 1st July, 1903.

† Large increase due to "Limerick" competitions.

APPENDIX L.—continued.

Postal Orders—continued.
STATEMENT showing the NUMBER of each CLASS of POSTAL ORDERS issued in each of the last TEN YEARS—continued.

Year.	NUMBER, IN THOUSANDS ('000 OMITTED).																			
	s. d. 10 6	s. d. 11 0	s. d. 11 6	s. d. 12 0	s. d. 12 6	s. d. 13 0	s. d. 13 6	s. d. 14 0	s. d. 14 6	s. d. 15 0	s. d. 15 6	s. d. 16 0	s. d. 16 6	s. d. 17 0	s. d. 17 6	s. d. 18 0	s. d. 18 6	s. d. 19 0	s. d. 19 6	s. d. 20 0
1899-1900	2,560	—	—	—	—	—	—	—	—	2,876	—	—	—	—	—	—	—	—	—	11,362
1900-01	2,767	—	—	—	—	—	—	—	—	2,996	—	—	—	—	—	—	—	—	—	11,687
1901-02	2,916	—	—	—	—	—	—	—	—	3,247	—	—	—	—	—	—	—	—	—	13,397
1902-03	2,926	—	—	—	—	—	—	—	—	3,220	—	—	—	—	—	—	—	—	—	12,925
1903-04	2,014	305	214	593	411	257	174	281	120	2,424	118	289	91	123	121	158	79	142	—	12,416
1904-05	1,208	582	406	1,084	689	555	866	591	258	1,751	251	521	229	312	303	399	195	381	—	12,653
1905-06	1,262	633	446	1,162	768	597	394	641	287	1,787	277	553	256	341	332	437	211	375	57	13,260
1906-07	1,288	773	530	1,299	872	692	458	754	343	2,349	299	577	277	366	354	468	223	278	213	13,607
1907-08	1,362	903	602	1,492	1,044	826	530	880	421	3,108	318	627	303	396	382	744	241	295	232	14,171
1908-09	1,425	951	644	1,607	1,156	904	580	956	466	3,423	342	664	322	420	414	854	254	310	254	14,542

* These Orders were not issued prior to 1st July, 1903.

† These Orders were not issued prior to 12th December, 1905

APPENDIX M.

Telephone Trunk Wires.

STATEMENT showing the NUMBER of CIRCUITS, MILES of WIRE, and CALLS in each of the last TEN YEARS.

Year.	Circuits.	Increase.	Miles of Wire.	Increase.	Calls.	Increase.
1899-1900	1,029	76	69,713	6,604	8,091,631	1,025,022
1900-01	1,116	87	76,831	7,118	8,980,733	889,102
1901-02	1,165	49	83,302	6,471	10,080,716	1,099,983
1902-03	1,309	144	93,473	10,171	11,574,229	1,493,513
1903-04	1,418	109	102,799	9,326	13,467,975	1,893,746
1904-05	1,604	186	112,743	9,943	15,461,822	1,993,847
1905-06	1,755	151	128,063	15,320	17,974,039	2,512,217
1906-07	2,043	288	141,810	13,747	19,803,363	1,829,324
1907-08	2,385	342	159,353	17,543	21,993,113	2,189,750
1908-09	2,526	141	172,670	13,317	23,502,024	1,508,911

Provincial Telephone Exchange Wires.

STATEMENT showing the NUMBER of MILES of WIRE and EXCHANGE TELEPHONES in each of the last TEN YEARS.

Year.	Miles of Wire.	Increase.	Exchange Telephones.	Increase.
1899-1900	4,762	393	2,246	114
1900-01	5,199	437	2,686	440
1901-02	6,283	1,084	3,891	1,205
1902-03	7,372	1,089	5,218	1,327
1903-04	8,602	1,230	6,847	1,629
1904-05	9,893	1,291	8,644	1,797
1905-06	12,529	2,636	11,469	2,825
1906-07	14,370	1,841	13,232	1,763
1907-08	56,538	*42,168	29,829	*16,597
1908-09	60,260	3,722	30,937	1,108

* Increases due to inclusion of figures relating to Glasgow and Brighton exchanges which were taken over in 1906.

APPENDIX M.—*continued.*

Private Wires.

STATEMENT showing the NUMBER OF CONTRACTS, MILES OF WIRE, and APPARATUS, and the RENTALS in each of the last TEN YEARS.

	Contracts.	Increase.	Miles of Wire.	Increase.	Telephones and Telegraph Apparatus.	Increase.	Rentals.	Increase.
1899-1900	2,788	112	27,334	1,505	5,863	234	£ 126,132	£ 5,067
1900-1	2,910	122	29,157	1,823	6,193	330	132,424	6,292
1901-2	3,234	324	34,924	5,767	6,605	412	151,853	19,429
1902-3	3,439	205	36,581	1,657	7,118	513	163,638	11,785
1903-4	3,499	60	40,608	4,027	7,595	477	169,769	6,131
1904-5	3,746	247	41,026	418	8,901	1,306	172,953	3,184
1905-6	3,869	123	41,887	861	9,243	342	177,111	4,158
1906-7	3,909	40	42,581	694	11,000	1,767	183,008	5,897
1907-8	4,323	414	37,569	Dec. 5,012	12,773	1,773	185,269	2,261
1908-9	4,354	31	38,192	Inc. 623	12,878	105	195,243	9,974

APPENDIX N.

Post Office

I.—REVENUE ACCOUNT.—An Account, partly estimated, of

EXPENDITURE.		
1907-8.		1908-9.
£		£
Administrative and Operating Expenses :—		
	Salaries, Wages and Allowances of Staff (other than the Engineering Staff) and	£
	Pensions of Superannuated Officers - - -	2,675,980
	Rent, Rates, Fuel and Light; - - -	78,522
2,848,644	Incidental Expenses - - -	166,303
		<u>2,920,805</u>
Maintenance of System :—		
	Salaries and Wages of Engineering Staff -	267,634
	Materials - - - - -	28,385
394,546	Incidental Expenses - - - - -	116,330
		<u>412,349</u>
Renewals of Plant, &c. :—		
	Salaries, Wages and Incidental Expenses -	80,369
153,065	Materials - - - - -	153,888
		<u>234,257</u>
Amount expended by other Government Departments in respect of various services rendered, viz. :—		
	Maintenance and Repair of Buildings -	40,880
	Rates on Government Property - - -	23,637
	Stationery and Printing - - - - -	45,287
112,313	Expenses of Audit - - - - -	1,586
		<u>111,390</u>
<u>£3,508,568</u>		<u>£3,678,801</u>

APPENDIX N.

Telegraphs.

Expenditure and Income for the year ended 31st March, 1909.

1907-8.		INCOME.		1908-9.	
£			£		£
	For transmission of Telegrams, &c., collected in cash	-	1,056,780		
	For transmission of Telegrams, &c., collected in Stamps	-	2,545,772		
3,609,855			3,602,552		
	<i>Less—</i>				
	Payments to Cable Companies, &c.	68,614			
	Monies refunded	4,083			
578,420			572,697		
3,031,435			3,029,855		
	Apportionment of Private Wire Rentals, &c. :—				
	<i>Add—</i>				
	Amounts collected in 1907-8	48,364			
	And in 1909-10	21,101			
	in respect of services rendered in 1908-9	69,465			
	<i>Less—</i>				
	Amounts collected in 1908-9 in respect of services rendered in 1907-8	19,433			
	and in respect of services to be rendered in 1909-10	51,307			
		70,740			
2,420			1,275		
3,033,855			3,028,580		
	Value of services rendered to other Government departments without payment, viz. :—				
	Admiralty	21,650			
	Customs and Inland Revenue	3,004			
	War Office	16,499			
	Sundry Departments	28,716			
69,506			69,869		
405,207	Deficiency carried to Account No. II. Telegraphs	-	580,352		
£3,508,568			£3,678,801		

APPENDIX N.—*continued*.

Post Office

II. DEFICIENCY ACCOUNT, including Expenditure in the
year ended

1907-8.		1908-9.
£		£
405,207	Deficiency from Account No. 1. Telegraphs - - -	580,352
	Interest on Capital Stock (Consols) created in respect of money raised for the Purchases of Telegraphs, &c., under the Telegraph Acts 1868-1870, and Acts amending the same - - - - -	271,691
181,323	Cost of Extensions of System and Additional Plant - -	91,987
30,697	Purchase Money of Sites - - - - -	10,197
	Amount expended by other Government Departments on the erection of buildings - - - - -	95,422
<u>£969,485</u>		<u>£1,049,649</u>

The interest on Capital Stock is expended out of the Consolidated Fund. No
in the annual votes of Parliament.

APPENDIX N.—*continued.***Telegraphs**—*continued.*

nature of Capital and Interest on Capital Stock, for the
31st March, 1909.

1907-8.	1908-9.
£	£
969,485 Total Deficiency for the year (subject to footnote)	1,049,649
<u>£969,485</u>	<u>£1,049,649</u>

interest is charged on the amount of expenditure which has been provided
and applied for Capital purposes.

APPENDIX O.

Post Office

I. REVENUE ACCOUNT.—An account, partly estimated, of

1907-8.	EXPENDITURE.		1908-9.
£	—	£	
Administrative and Operating Expenses:—			
Salaries, Wages, and Allowances of Staff		£	
(other than the Engineering Staff) and			
Pensions of Superannuated Officers		390,731	
Rents, Rates, Fuel and Light		13,055	
Incidental Expenses		14,560	
362,572			418,346
Maintenance of System:—			
Salaries and Wages of Engineering Staff		227,985	
Materials		24,180	
Incidental Expenses		99,095	
313,795			351,260
Renewals of Plant, &c.:—			
Salaries, Wages and Incidental Expenses		66,730	
Materials		102,337	
174,478			169,067
Amount expended by other Government			
Departments in respect of various services rendered, viz.:—			
Maintenance and Repair of Buildings		5,552	
Rates on Government Property		3,210	
Stationery and Printing		6,150	
Expenses of Audit		1,586	
13,696			16,498
214,869	Balance carried to Account No. II. Telephones	-	264,738
<u>£1,079,410</u>			<u>£1,219,909</u>

APPENDIX O.—*continued.*

Post Office

II. NET REVENUE ACCOUNT, Year ended 31st

1907-8.	EXPENDITURE.	1908-9.
£		£
	Annuity paid to National Debt Commissioners for Advances of Capital made on Telephone Account under the Telegraph Acts, 1892-1907 :—	
140,104	Proportion applicable to Interest on outstanding Loans - - - - -	153,556
357,484	Balance carried to Account No. III. Telephones- - -	407,628
<u>£497,588</u>		<u>£561,184</u>

III. APPROPRIATION ACCOUNT, Year

1907-8.		1908-9.
£		£
—	Balance from 31st March, 1908 - - - - -	72,222
	Annuity paid to National Debt Commissioners for Advances of Capital made on Telephone Account under the Telegraph Acts, 1892-1907 :—	
429,706	Proportion applicable to repayment of Principal -	457,624
<u>£429,706</u>		<u>£529,846</u>

APPENDIX O—*continued.***Telephones—*continued.*****March, 1909, including Royalties from Licensees.**

INCOME.		
1907-8.		1908-9.
£		£
10,257	Balance from 31st March, 1907 - - - - -	—
214,869	Balance from Account No. I. Telephones - - - - -	264,738
	Royalties received from National Telephone Company and other Licensees—	
269,789	National Telephone Company - - - - -	293,823
2,673	Other Licensees - - - - -	2,618
<hr/> £497,588		<hr/> £561,184

ended 31st March, 1909.

1907-8.		1908-9.
£		£
357,484	Balance from Account No. II. Telephones - - - - -	407,628
	Balance, being repayment of Principal of Loans to 31st March, 1909, in excess of the Net Revenue available for the purpose - - - - -	
72,222		122,218
<hr/> £429,706		<hr/> £529,846

G

APPENDIX O.—continued.

Post Office

IV. CAPITAL ACCOUNT.—Year

EXPENDITURE.				
<i>Period to 31st March, 1907.</i>	<i>Year to 31st March, 1908.</i>		<i>Year to 31st March, 1909.</i>	<i>Total.</i>
£	£		£	£
TRUNK LINES :—				
459,114	—	Purchase from National Tele-	—	
2,917,139	570,405	phone Company		
		Construction by Post Office	736,138	4,682,796
EXCHANGES (including Private Wires) :—				
<i>London :—</i>				
2,506,591	343,963	Construction by Post Office	300,460	
108,104	27,711	Land and Buildings	37,423	3,324,252
<i>Provinces :—</i>				
<i>Purchase from Corporations :—</i>				
305,000	—	Glasgow	—	
49,000	—	Brighton	—	
492,749	164,061	Construction by Post Office	206,310	1,217,120
6,837,697	1,106,140			9,224,168
STORES (in stock) purchased but not yet allocated to particular works				
—	177,087		184,538	184,538
BALANCE at credit of Postmaster General's Account with Bank of England, being unexpended balance of Loans on 31st March, 1909				
—	29,076		41,294	41,294
			£9,450,000	

APPENDIX O.—*continued.*Telephones—*continued.*

ended 31st March, 1909.

LOANS.

BORROWING POWERS conferred by Parliament, viz. :—

		£	£
Telegraph Act, 1892	- - - - -	1,000,000	
" " 1896	- - - - -	300,000	
" " 1898	- - - - -	1,000,000	
" " 1899	- - - - -	2,000,000	
" " 1904	- - - - -	3,000,000	
" " 1907	- - - - -	6,000,000	
		<u>£13,300,000</u>	

LOANS RAISED (as per Schedule below) - - - 9,450,000

Period.	Advances received from National Debt Commissioners.	Redeemed by Terminable Annuities.		Balance outstanding.
		In previous years.	In current year.	
To 31st March, 1908.	£ 8,150,000	£ 2,111,547	£ —	£
Year ended 31st March, 1909.	1,300,000	—	457,624	
	9,450,000	2,111,547	457,624	6,880,829
		2,569,171		

£9,450,000

APPENDIX P.

Post Office

A.—TRUNK

AN ACCOUNT, partly estimated, of EXPENDITURE and

EXPENDITURE.		
1907-8. £		1908-9. £
189,880	Administrative and Operating Expenses - - - -	215,226
	Maintenance of System - - - - -	154,480
	Less—	
	Salaries of Engineers employed on Con- struction - - - - -	27,610
110,643		126,870
115,692	Renewals of Plant - - - - -	91,564
8,655	Amounts expended by other Government Departments in respect of various services rendered - - - -	7,924
62,290	Interest paid to National Debt Commissioners on Out- standing Loans - - - - -	69,561
3,123	Interest chargeable on Capital Expenditure met out of Annual Votes of Parliament in respect of Engineering salaries - - - - -	3,757
490,283	Total of above expenses - - -	514,902
44,066	Balance available for Depreciation, or for Repayment of Capital (a) - - - - -	61,244
<u>£534,349</u>		<u>£576,146</u>

(a) The Capital Expenditure to 31st March, 1909, out of Loan Monies amounted Parliament for the purpose. The additional Capital Expenditure to 31st March, amounted to £152,844.

APPENDIX P.

Telephones.

LINE SYSTEM.

INCOME for the YEAR ended 31st March, 1909.

INCOME.			
1907-8.			1908-9.
£		£	£
535,164	Trunk Fees (exclusive of £23,723 Commission allowed to Licensees for collection, &c.)	574,365	
	<i>Less—</i>		
9,430	Payments to Foreign Countries, Monies refunded, &c.	7,839	
<u>525,734</u>		<u>566,526</u>	
	<i>Add—</i>		
	Amounts collected in 1909-10 in respect of services rendered in 1908-9	£81,501	
	<i>Less—</i>		
	Amounts collected in 1908-9 in respect of services rendered in 1907-8	72,784	
8,334		<u>8,717</u>	
<u>534,068</u>			575,243
	Rentals of Wires leased to Telephone Licensees, &c.	133	
	<i>Less—</i>		
	Amounts proper to 1909-10	6	
			127
12	Miscellaneous Receipts		383
269	Value of services rendered to other Government Departments without payment		393
<u>£534,349</u>			<u>£576,146</u>

to £4,682,796, of which a sum of £1,527,628 has been repaid out of money voted by 1909, met out of annual votes of Parliament in respect of Engineering salaries,

APPENDIX P.—*continued.*

Post Office

B.—LONDON

AN ACCOUNT, partly estimated, of Expenditure and

EXPENDITURE.

1907-8. £		1908-9. £
104,295	Administrative and Operating Expenses - - - -	122,145
	Maintenance of System - - - - -	103,695
	<i>Less—</i>	
	Salaries of Engineers employed on Construction - - - - -	11,280
90,793		94,415
30,448	Renewals of Plant - - - - -	49,173
1,698	Amounts expended by other Government Departments in respect of various services rendered - - - -	5,088
57,681	Interest paid to National Debt Commissioners on Outstanding Loans - - - - -	61,545
2,677	Interest chargeable on Capital Expenditure met out of Annual Votes of Parliament in respect of Engineering salaries - - - - -	3,060
287,592	Total of above expenses - - - -	335,426
107,362	Balance available for Depreciation or for Repayment of Capital (a) - - - - -	131,151
<u>£394,954</u>		<u>£466,577</u>

(a) The Capital Expenditure to 31st March, 1909, out of Loan Monies amounted £113,288. The additional Capital Expenditure to 31st March, 1909, £113,288.

APPENDIX P.—*continued.*Telephones.—*continued.*

EXCHANGE SYSTEM.

Income for the Year ended 31st March, 1909.

INCOME.			
1907-8.			1908-9.
£		£	£
278,585	Annual subscriptions - - - - -	305,543	
	Apportionment of annual subscriptions—		
	<i>Add—</i>		
	Amounts collected in		
	1907-8 in respect of		
	services rendered in		
	1908-9 - - - £141,196		
	<i>Less—</i>		
	Amounts collected in		
	1908-9 in respect of		
	services to be rendered in 1909-10 -	156,163	
17,650		14,967	
260,935			790,576
	Message fees in addition to minimum of £1 10s.		
64,668	charged in subscription - - - - -		76,940
15,559	Call Office fees - - - - -		20,472
	Rentals of wires leased to National Telephone		
	Company - - - - -	62,804	
	<i>Add—</i>		
	Amounts collected in 1909-10		
	in respect of 1908-9 - - -	6,319	
49,424			69,123
952	Miscellaneous receipts - - - - -		4,733
3,416	Value of services rendered to other Government		
	Departments without payment - - -		4,733
£394,954			£466,577

to £3,324,252, of which a sum of £824,447 has been repaid out of money voted by met out of annual votes of Parliament in respect of Engineering salaries, amounted to

APPENDIX P.—*continued*.

Post Office

C.—PROVINCIAL

An ACCOUNT, partly estimated, of EXPENDITURE and

EXPENDITURE.		
1907-8.		1908-9.
£		£
68,397	Administrative and Operating Expenses - - - -	80,975
	Maintenance of System - - - - -	91,085
	Less—	
	Salaries of Engineers employed on Construction - - - - -	7,740
72,359		83,345
28,338	Renewals of Plant - - - - -	28,330
3,343	Amounts expended by other Government Departments in respect of various services rendered - - - -	3,486
20,133	Interest paid to National Debt Commissioners on Outstanding Loans - - - - -	22,450
528	Interest chargeable on Capital Expenditure met out of annual votes of Parliament in respect of Engineering salaries - - - - -	711
193,098	Total of above expenses- - -	219,297
Nil	Balance available for Depreciation or for Repayment of Capital (a) - - - - -	Nil
£193,098		£219,297

(a) The Capital Expenditure to 31st March, 1909, out of Loan Monies voted by Parliament for the purpose. The additional Capital Expenditure to 31st salaries, amounted to £31,442.

APPENDIX P.—*continued.***Telephones.—***continued.***EXCHANGE SYSTEM.**

INCOME for the YEAR ended 31st March, 1909.

INCOME.			
1907-8.			1908-9.
£		£	£
142,822	Annual Subscriptions - - - - -	152,882	
	Apportionment of Annual Subscriptions—		
	<i>Add—</i>		
	Amounts collected in		
	1907-8 in respect of	£	
	services rendered in		
	1908-9 - - -	70,084	
	<i>Less—</i>		
	Amounts collected in		
	1908-9 in respect of		
	services to be		
	rendered in 1909-10	76,227	
13,523		6,143	
<u>129,299</u>			146,739
3,317	Message Fees, in addition to minimum of £1 10s charged in Subscription - - - - -		4,107
8,678	Call Office Fees - - - - -		10,279
	Rentals of Wires leased to National Telephone Company - - - - -	£ 12,273	
	<i>Less—</i>		
	Amounts proper to 1909-10 - - -	7	
7,179			12,266
479	Miscellaneous Receipts - - - - -		2,263
1,155	Value of services rendered to other Government Depart- ments without payment - - - - -		1,532
<u>150,107</u>	Total Income - - - - -		<u>177,186</u>
42,091	Deficiency		42,111
<u>£193,098</u>			<u>£219,297</u>

amounted to £1,217,120, of which a sum of £217,095 has been repaid out of money March, 1909, met out of annual votes of Parliament in respect of Engineering

APPENDIX Q.

RETURN showing, for each YEAR from 1899-1900, the REVENUE, EXPENDITURE and NET REVENUE of the POSTAL SERVICES.

Year.	REVENUE.			EXPENDITURE.												Net Revenue.	Percentage of Total Expenditure to Total Revenue.	Net Revenue after deducting Expenditure on Sites and Buildings from Total Expenditure.
	Postal Receipts.	Estimated Value of Services to other Departments.	Total.	Purchase.		Sites and Buildings.	Superannuations and other Non-Effective Charges.	Salaries, Wages, &c.	Percentage of Salaries, &c. to Total Revenue.	Conveyance of Mails.*	Percentage of Conveyance of Mails to Total Revenue.	Packet Service.	Other Expenditure.		Total Expenditure.			
				£	s								Under Office Vote.	Under other Votes.				
1899-1900	12,192,020	202,315	13,394,335	115,294	169,098	269,092	6,017,618	44-93	1,537,967	11-48	759,307	601,876	213,747	9,683,999	72-29	3,710,336	3,994,728	
1900-01	13,776,886	218,584	13,995,470	78,789	156,373	286,255	6,339,390	45-30	1,575,540	11-26	764,805	605,954	234,478	10,041,584	71-74	3,953,886	4,189,048	
1901-02	14,228,906	236,964	14,465,870	106,340	160,382	300,980	6,602,034	45-64	1,640,959	11-34	770,431	624,123	259,852	10,465,101	72-34	4,000,769	4,267,491	
1902-03	14,760,694	244,568	15,005,262	112,038	205,630	311,232	6,841,382	45-59	1,665,288	11-10	770,385	643,926	270,057	10,819,938	72-11	4,183,324	4,503,993	
1903-04	15,559,100	265,294	15,824,394	159,734	234,645	335,150	7,005,127	44-27	1,728,673	10-92	784,635	666,298	286,860	11,201,122	70-78	4,623,272	5,017,651	
1904-05	16,031,050	243,928	16,274,978	82,604	274,175	354,822	7,199,248	44-24	1,831,864	11-26	740,126	680,624	282,816	11,446,279	70-33	4,828,699	5,185,478	
1905-06	16,823,349	240,674	17,064,023	75,759	250,127	377,131	7,737,010	45-34	1,821,758	10-68	687,109	604,927	295,191	11,849,012	69-44	5,215,011	5,540,897	
1906-07	17,125,817	234,087	17,360,504	37,976	259,622	409,675	8,053,569	46-39	1,854,839	10-68	724,341	656,383	298,494	12,294,329	70-82	5,063,675	5,363,373	
1907-08	17,851,118	245,125	18,096,243	102,765	277,027	437,903	8,625,714	47-67	1,875,866	10-37	756,886	690,409	343,496	13,109,566	72-44	4,986,677	5,366,469	
1908-09 (Estimated)	17,790,015	335,349	18,125,364	34,139	319,465	460,955	8,849,416	48-82	1,868,288	10-25	704,890	792,397	354,387	13,373,937	73-79	4,751,437	5,105,081	

* The Railway Companies' share of the postage on Parcels is not included in these totals. The figures are shown in Appendix A., page 37.
+ A payment into the Exchequer as Extra Receipts, amounting to \$24,363, is included in this amount.

APPENDIX R.

RETURN showing, for each YEAR from 1899-1900, the REVENUE, EXPENDITURE and NET REVENUE of the Post Office TELEGRAPH and TELEPHONE SERVICES.

YEAR.	REVENUE.				EXPENDITURE.																	
	Telephone Receipts.	Estimated Value of Departments.	Total.	(1)	Sites and Buildings.		Erection.	Direct Charge to Vote.	Extensions.		Superannuations and other Non-Effective Charges.	Salaries, Wages, &c.	Percentage of Salaries to Total Revenue.	Maintenance of Telegraph System.	Percentage of Main-tenance to Total Revenue.	Interest on Balance of Stock created for Purchase of Tele-grams(10,867,644/).	Other Expenditure.		(18)			
					Purchase.	Erection.			Terminable Annuities for Advances under Telegraph Acts, 1892 to 1907.	Capital.							Interest.	(16)		(17)		
																					(2)	(3)
1899-1900	-	3,389,746	70,746	£	18,029	59,329	187,063	£	63,140	26,990	81,031	£	2,279,722	65.87	705,819	20.39	298,860	£	238,610	89,151	£	4,047,944
1900-01	-	3,380,589	78,764	£	23,160	46,890	148,118	£	78,817	33,785	86,375	£	2,343,769	67.75	691,948	20.00	298,860	£	248,723	95,399	£	4,065,854
1901-02	-	3,490,598	79,448	£	34,110	47,694	226,997	£	127,545	45,763	96,394	£	2,416,553	67.69	874,426	24.49	298,860	£	255,112	97,233	£	4,320,787
1902-03	-	3,631,745	92,121	£	37,346	47,903	179,271	£	166,907	60,524	103,744	£	2,509,234	67.38	874,067	23.47	298,860	£	243,733	102,848	£	4,624,437
1903-04	-	3,674,158	61,957	£	53,245	68,141	245,410	£	207,267	77,612	111,716	£	2,562,145	68.58	1,004,462	26.89	278,483	£	252,168	111,732	£	4,972,381
1904-05	-	3,851,719	68,304	£	27,534	107,828	291,617	£	242,744	88,724	118,274	£	2,624,563	66.95	997,259	25.44	271,691	£	230,386	110,530	£	5,111,150
1905-06	-	4,088,957	62,423	£	23,924	78,886	257,704	£	299,127	100,224	119,094	£	2,673,571	64.40	963,912	23.22	271,691	£	259,169	116,538	£	5,163,890
1906-07	-	4,295,790	73,437	£	11,665	79,693	306,375	£	351,246	118,642	125,848	£	2,722,412	62.31	947,657	21.69	271,691	£	231,748	116,639	£	5,283,616
1907-08 (Telegraphs	-	3,031,434	69,306	£	30,697	80,567	181,323	£	—	—	116,584	£	2,503,875	80.75	547,611	17.66	271,691	£	339,222	112,313	£	4,173,883
1907-08 (Telephones	-	1,375,340	4,840	£	—	—	—	£	429,706	140,104	14,218	£	326,925	23.64	488,273	35.90	—	£	21,429	13,696	£	1,434,351
1908-09 (Telegraphs	-	3,029,855	69,869	£	10,197	95,422	91,987	£	—	—	121,225	£	2,554,755	82.42	646,606	20.86	271,691	£	315,386	111,390	£	4,218,659
1908-09 (Telephones	-	1,515,784	6,658	£	—	—	—	£	457,624	153,546	16,462	£	374,269	21.58	520,327	34.18	—	£	38,634	16,498	£	1,567,570
(Estimated).																						

* The Annuities shown under the head of Extensions are also charged against the Vote; they are for varying periods (12 to 20 years).

APPENDIX R.—continued.

RETURN showing, for each year from 1899-1900, the REVENUE, EXPENDITURE and NET REVENUE of the
POST OFFICE TELEGRAPH and TELEPHONE SERVICES—continued.

Year.	(19)	(20)	(21)	(22)	(23)	(24)	(25)	(26)	(27)	(28)
		Gross Revenue.	Adjusting entry for apportionment of Wire Rentals, Annual Subscriptions and Balances.	Gross Revenue proper to year.	Gross Expenditure including Interest on Telegraph Stock.	Deduct or add Excess or Deficiency of Stores paid for over Stores used in the year.	Adjusted Expenditure.	Balance of Gross adjusted Expenditure over adjusted Revenue.	Expenditure in the nature of Capital (Sites, &c.).	Net Revenue after deducting Expenditure in the nature of Capital (Sites, &c.) from Gross Expenditure.
1899-1900	-	\$ 3,460,492	- \$ 3,516	\$ 3,456,976	\$ 4,047,944	+ \$ 8,303	\$ 4,056,247	\$ 599,271	\$ 327,761	\$ 271,510
1900-01	-	\$ 3,459,353	+ 1,863	\$ 3,461,216	\$ 4,065,854	+ 39,744	\$ 4,135,598	\$ 674,382	\$ 296,985	\$ 377,397
1901-02	-	\$ 3,570,046	- 1,880	\$ 3,568,166	\$ 4,520,787	- 48,884	\$ 4,471,903	\$ 903,737	\$ 436,346	\$ 467,391
1902-03	-	\$ 3,723,866	- 30,154	\$ 3,693,702	\$ 4,624,437	- 167,947	\$ 4,456,490	\$ 762,788	\$ 431,427	\$ 331,361
1903-04	-	\$ 3,736,115	+ 1,653	\$ 3,737,768	\$ 4,972,381	- 145,386	\$ 4,826,995	\$ 1,089,227	\$ 574,063	\$ 515,164
1904-05	-	\$ 3,920,023	+ 5,307	\$ 3,925,330	\$ 5,111,150	+ 14,423	\$ 5,125,573	\$ 1,200,243	\$ 669,723	\$ 530,520
1905-06	-	\$ 4,151,380	- 48,816	\$ 4,102,564	\$ 5,163,890	- 24,590	\$ 5,139,300	\$ 1,036,736	\$ 659,641	\$ 377,095
1906-07	-	\$ 4,369,227	- 53,635	\$ 4,315,592	\$ 5,283,616	+ 9,620	\$ 5,293,236	\$ 977,644	\$ 748,979	\$ 228,665
1907-08	{ Telegraphs Telephones	\$ 3,100,940 \$ 1,383,180	+ 2,420 - 31,308	\$ 3,103,360 \$ 1,351,872	\$ 4,173,883 \$ 1,434,351	- 101,037 -	\$ 4,072,846 \$ 1,434,351	\$ 969,486 \$ 82,479	\$ 292,587 \$ 429,706	(Deficit) \$76,899 \$47,227
1908-09	{ Telegraphs Telephones (Estimated)	\$ 3,099,724 \$ 1,522,442	- 1,275 - 6,087	\$ 3,098,449 \$ 1,516,355	\$ 4,218,659 \$ 1,567,570	- 70,561 - 1,219	\$ 4,148,098 \$ 1,566,351	\$ 1,049,649 \$ 49,996	\$ 197,606 \$ 457,624	(Deficit) \$52,043 \$407,628

* Balance of Gross adjusted Expenditure over adjusted Revenue (Telephones), 1907-8
Do. do. 1908-9

Balance of Net Revenue (Telephones), 31st March 1907

Balance as per Appendix O. III. Appropriation Account

\$82,479
49,996
132,475
10,257
\$122,218

APPENDIX S.

STATEMENT showing for each YEAR from 1899-1900 the combined REVENUE, EXPENDITURE and NET REVENUE of the
POSTAL, TELEGRAPH and TELEPHONE SERVICES.

YEAR.	REVENUE.		EXPENDITURE.										Per-centage- of Total Expen- diture to Total Reve- nue.	Net Revenue.		
	Receipts.	Esti- mated Value of Services to other Depart- ments.	Total.	Salaries, Wages, &c.		Superannuations and other Non- Effective Charges.		Sites and Buildings.		Interest on Balance of Stock created for Purchase of Telegraphs (10,867,644l.)	Other Expenditure.					
				Amount.	Per- centage to Total Reve- nue.	Per- centage to Total Expen- diture.	Amount.	Per- centage to Total Expen- diture.	Amount.		Per- centage to Total Expen- diture.					
1899-1900	£ 16,581,766	£ 273,061	£ 16,854,827	£ 8,297,340	49.23	60.43	£ 350,123	2.55	£ 361,950	2.64	£ 298,860	£ 4,423,670	32.21	£ 13,781,943	81.47	£ 3,122,884
1900-01	17,157,475	297,348	17,454,823	8,683,159	49.75	61.42	372,630	2.61	305,212	2.16	298,860	4,477,577	31.67	14,137,438	80.99	3,317,385
1901-02	17,719,504	316,412	18,035,916	9,018,687	50.00	60.18	397,374	2.65	349,526	2.33	298,860	4,922,441	32.85	14,985,888	83.09	3,050,028
1902-03	18,392,439	336,689	18,729,128	9,350,616	49.93	60.54	414,976	2.69	402,917	2.61	298,860	4,977,006	32.23	15,444,375	82.46	3,284,753
1903-04	19,233,258	327,251	19,560,509	9,567,272	48.91	59.15	446,866	2.76	515,765	3.19	278,483	5,365,117	33.17	16,173,503	82.68	3,337,006
1904-05	19,882,769	312,232	20,195,001	9,823,811	48.64	59.33	473,096	2.86	492,141	2.97	271,691	5,496,690	33.20	16,557,429	81.99	3,637,572
1905-06	20,936,669	278,734	21,215,403	10,410,581	49.07	61.19	496,225	2.92	438,696	2.52	271,691	5,405,709	31.77	17,012,902	80.19	4,202,501
1906-07	21,421,607	308,124	21,729,731	10,775,981	49.59	61.30	535,523	3.05	388,956	2.21	271,691	5,606,294	31.89	17,578,445	80.90	4,151,286
1907-08	22,260,892	319,471	22,580,363	11,456,514	50.74	61.21	568,705	3.04	491,056	2.32	271,691	5,929,834	31.68	18,717,800	82.89	3,862,563
1908-09 (Estimated)	22,335,654	411,876	22,747,530	11,778,440	51.78	61.47	598,642	3.12	439,223	2.40	271,691	6,052,170	31.59	19,160,166	84.23	3,587,364

APPENDIX T.

**Extract from the Finance Accounts for the Year ended
31st March, 1909.**

*Inserted by desire of the Select Committee on Estimates, Revenue
Departments.*

**DETAILED STATEMENT of the GROSS RECEIPTS and NET RECEIPTS of
the REVENUE.**

POSTAL RECEIPTS.

	£	s.	d.	£	s.	d.
Gross Receipts :						
From Postage Stamps sold by Postmasters - - -	18,389,817	4	4½			
From Postage Stamps sold by Stamp Distributors of Inland Revenue - -	269,122	12	10			
				18,658,939	17	2½
From Postage collected in cash by Country Postmasters - - -	193,815	17	8			
From Postage collected in cash in London, Dublin and Edinburgh - -	235,454	0	3			
				429,269	17	11
From Postage collected for credit of United Kingdom by Colonial Offices - - -	61,816	5	6½			
From Postage collected for credit of United Kingdom by Foreign Offices, &c. - - -	95,140	16	10			
				156,957	2	4½
From Commission on Money Orders - -	149,250	12	2			
Ditto Postal Orders - -	461,579	12	6½			
				610,830	4	8½
From Miscellaneous Receipts - - -	-	-	-	48,506	19	1½
				19,904,504	1	3½
Payments out of Receipts :						
For Postage, &c., refunded - - -	27,929	15	6½			
To Inland Revenue Department - -	591,960	0	0			
To Railway Companies, &c., on account of Parcel Post - - -	1,079,995	1	8			
For Postage collected for credit of Colonial Offices - - -	190,641	12	3½			
For Postage collected for credit of Foreign Offices, &c. - - -	223,962	13	5			
				2,114,489	2	11½
Receipts - - -	-	-	-	£17,790,014	18	4½
Payments into Exchequer - - -	-	-	-	£17,770,000	0	0

APPENDIX T.—*continued.*

TELEGRAPH RECEIPTS.

	£	s.	d.	£	s.	d.
Gross Receipts :						
For transmission of Telegrams, &c.,						
collected in Cash - - - - -	1,056,780	5	7			
For transmission of Telegrams, &c.,						
collected in Stamps - - - - -	2,545,772	8	5			
				3,602,552	14	0
Payments out of Receipts :						
To Cable Companies, &c. - - - - -	568,614	7	4			
To Telegram Moneys refunded, &c. - - - - -	4,083	6	10½			
				572,697	14	2½
Net Receipts - - - - -				£3,029,854	19	9½
Payments into Exchequer - - - - -				£3,020,000	0	0

TELEPHONE RECEIPTS.

Post Office Telephone Service :						
Gross Receipts :						
Telephone Trunk and Exchange						
Receipts - - - - -	1,227,176	16	10			
Payments out of Receipts :—						
To Foreign Administrations, Refund-	7,838	14	7			
ments, &c. - - - - -						
Net Receipts from Post Office Telephone Service - - - - -				1,219,338	2	3
Royalties from Licensees - - - - -				296,446	0	11
Net Receipts - - - - -				£1,515,784	3	2
Payments into Exchequer - - - - -				£1,510,000	0	0

General Post Office, {
5th June, 1909. }

CHARLES A. KING,
Comptroller and Accountant-General.

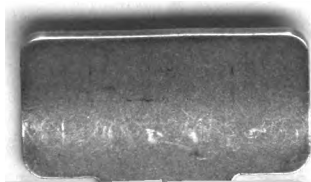
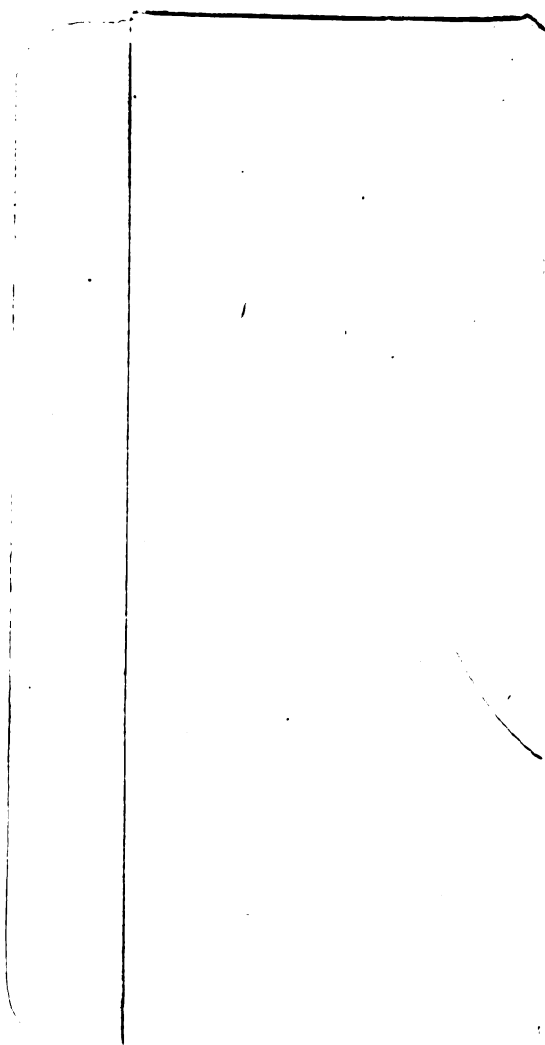
APPENDIX U.

SUMMARY OF STATISTICS for the YEAR 1908-09 compared with
the PREVIOUS YEAR.

—	1907-08.	1908-09.	Increase per cent.	For details see pages
Postal.				
Postal packets delivered -	4,862,600,000	4,922,900,000	1·2	32-36
Parcels delivered -	109,470,000	113,023,000	3·2	37
Registered Letters and Parcels	20,157,312	20,275,981	·6	38-40
Express Delivery Services -	1,808,888	1,919,687	6·1	41
Undelivered Postal Packets,&c.	31,277,748	30,509,201	(Dec.) 2·5	60
Foreign and Colonial Mails :—				
Letters, &c. :—				
<i>Despatched (Weight)</i> -	*Lb.30,863,000	†Lb.32,421,000	5·0	} 42-43
<i>Received (Weight)</i> -	*Lb.12,777,000	†Lb.13,355,000	4·5	
Parcels :—				
<i>Despatched (Number)</i> -	2,736,561	2,808,051	2·6	} 44-47
<i>Received (Number)</i> -	1,515,800	1,534,042	1·2	
Savings Bank transactions :—				
Deposits :—				
<i>Number</i> - - -	*18,771,969	†18,379,991	(Dec.) 2·1	} 64
<i>Amount</i> - - -	*£44,217,288	†£44,770,782	1·3	
Withdrawals :—				
<i>Number</i> - - -	*9,308,247	†9,922,169	6·6	} 64
<i>Amount</i> - - -	*£46,433,632	†£45,395,400	(Dec.) 2·2	
Money Orders :—				
<i>Number</i> - - -	13,628,675	13,381,435	(Dec.) 1·8	} 72-80
<i>Amount</i> - - -	£48,352,060	£48,141,776	(Dec.) ·4	
Postal Orders :—				
<i>Number</i> - - -	125,264,000	119,280,000	(Dec.) 4·8	} 81-83
<i>Amount</i> - - -	£44,614,000	£46,213,000	3·6	
Telegraph and Telephone.				
Telegrams - - -	85,969,000	84,825,000	(Dec.) 1·3	61-62
Telephone Trunk Calls -	21,993,113	23,502,024	6·9	84
Postal, Telegraph and Telephone Combined.				
Gross Revenue- - -	£22,580,363	£22,747,530	·7	} 102-107
Gross Expenditure - -	£18,717,800	£19,160,166	2·4	
Net Revenue - - -	£3,862,563	£3,587,364	(Dec.) 7·1	
Staff (all classes)- -	203,597	207,947	2·1	55-56

* Year 1907.

† Year 1908.



UNIVERSITY OF MINNESOTA
wils 53-55
354.424 G79
Great Britain. Post Office.
Report of the Postmaster General on the



3 1951 002 272 343 1

**WILSON
ANNEX
AISLE 71**